

Overview of the MicroMark to AccuMark Batch Conversion Program

MmAmBatch is a program that will convert MicroMark batch files into the AccuMark system and process them in the AccuMark Batch program automatically. It will process Mark, Draw and Creat files created in the MicroMark system. When processing Mark files it is important to add the AccuMark tables that are needed. With Mark, Draw and Creat files they will all need a file that instructs the program which storage area to access in AccuMark. We handle both situations with supplemental text files that contain the information needed.

You do not need a special license entry to use this program but you do need marking permitted to get Batch activated.

Overview Flowchart:

1. Mark, Draw, or Cut Files get merged with OrderSettings.txt into a CSV format in an XML file created by the MmAmBatch program.
2. MarkJobSettings.txt values are added to XML for later Batch processing
3. The XMLBatchServer searches the Watch directory (Program Files/Gerber Technology/AccuMark V8/MmAmBatch)
4. XMLserver processes the XML file
 - a. CSVImport will create an order editor that is stored in a storage area based on the batch parameter table called in the MarkJobSettings.txt. The draw and cut files do not need this information and this step will be skipped for these types of batch files.
 - b. AMsubmit will submit this order with the rest of the *JobSettings.txt values to the AccuMark Batch program.
 - c. Batch will then orderload a marker, plot, and cut based on what is selected in the batch parameter table used.
 - d. The XML file is put into Archive folder after successful processing.

Installation of MmAmBatch program:

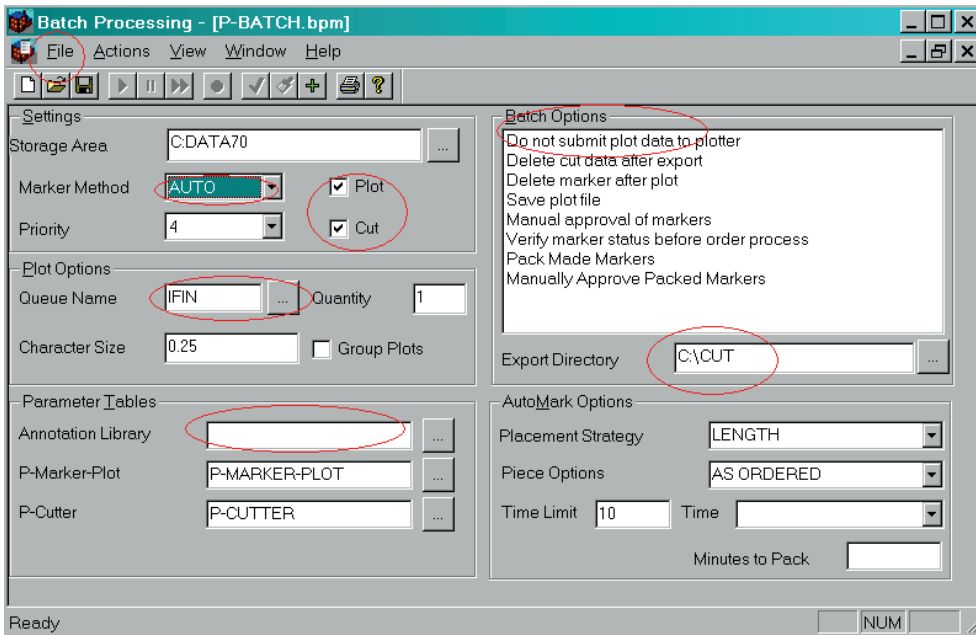
There is a separate installation on the AccuMark CD named [MmAmBatch install](#). It will load the XMLserver program into the start menu to begin automatically after you restart the computer. It will also install sample files for the procedures below as well in C:\userroot\batch.

Running MicroMark to Accumark Batch for a Mark Request:

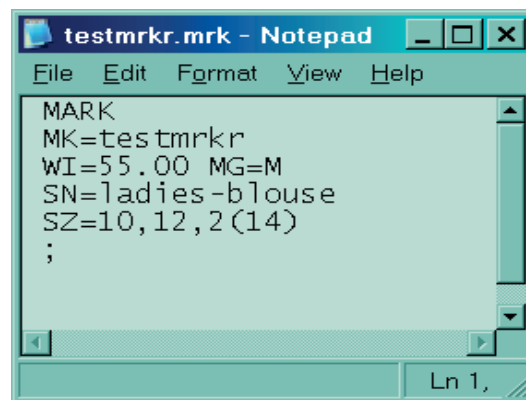
1. Double click on the Batch icon from the Launch Pad and update the P-Batch parameter table for processing markers.



1. Select the Batch icon on the Launch Pad
2. In the Batch program select File/Open and select the P-batch table.
3. Change the Plotter Queue name to your plotter using the lookup table.
4. Change the Export Directory to be a folder for your cut data.
5. Clear the Annotation Library field
6. Set Marker Method to 'Auto'.
7. Deselect the batch option 'do not submit plot data to plotter'.
8. File [Save](#) to save as same name of P-Batch

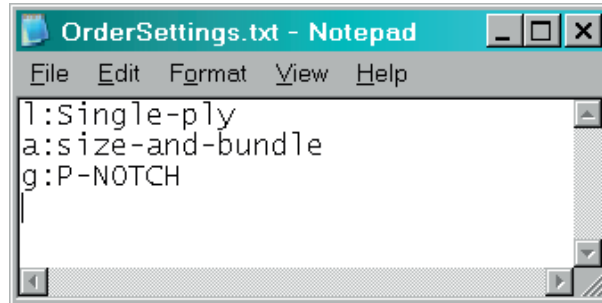


2. The **C:\Userroot\Batch** folder contains all the files needed to go through this exercise. This sample MicroMark mark batch file, **testmrkr.mrk** will use data in C: Data70 for this example.



Note: must have Semi-colon as last line per request, tokens are separated by a space or new line, the MK name can be on the same line as 'Mark'.

3. The **OrderSettings.txt** will add the information that is not in a mark file that AccuMark will need. This table should have laylimits, annotation, and notch table names. There could be many combinations of this table. No commented out lines are allowed, however. If the block/buffer table is specified in the model editor, then this information would not be added to this file. All the choices of options are in a chart at the end of this document. The laylimits associated to model names will control the piece behavior of that model, yet there still must be a laylimits in this file to determine the fabric spread type of the marker.

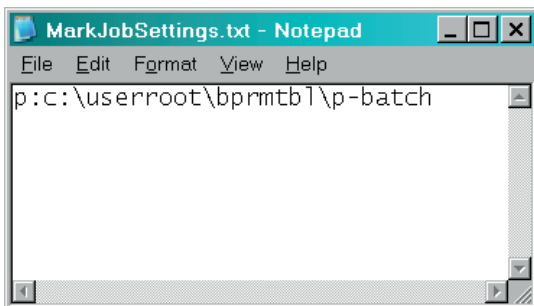


```

OrderSettings.txt - Notepad
File Edit Format View Help
l:Single-ply
a:size-and-bundle
g:P-NOTCH

```

5. The **MarkJobSettings.txt** file instructs the MmAmBatch program to the batch parameter table that is to be used during the processing. This table also tells the program which storage area to send the order editor it creates to as well as how to process the marker through Batch processing. All the values in the batch parameter table will be used, but this table could also override some of the batch parameter table choices if desired. A chart at the end of this document lists which values can be changed. No commented out lines are allowed, however.



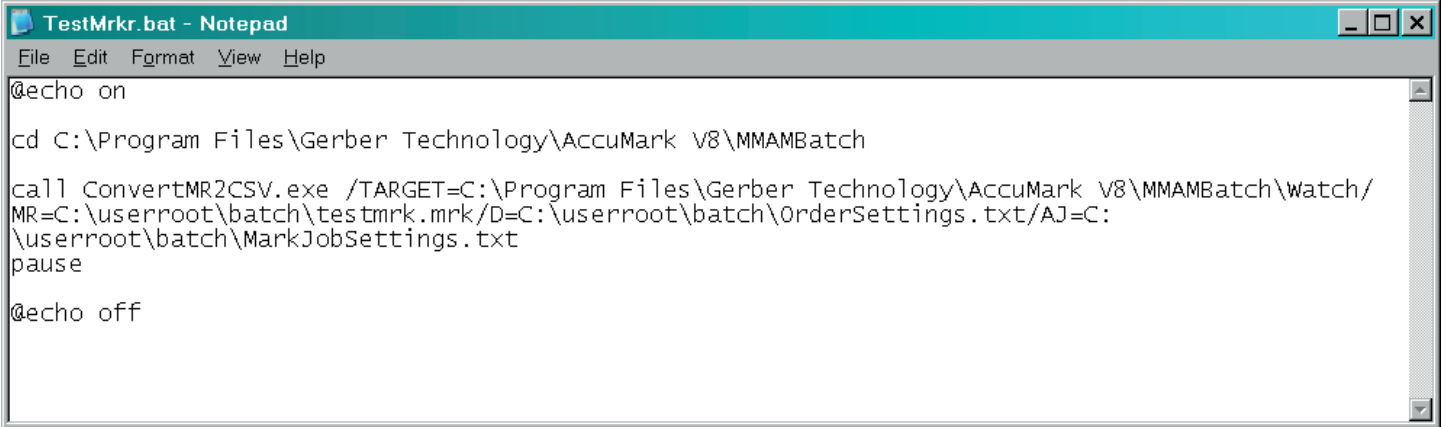
```

MarkJobSettings.txt - Notepad
File Edit Format View Help
p:c:\userroot\bprmtb\p-batch

```

6. A batch file, **TestMrkr.bat** is provided to work with. This will call the convert program with the MicroMark mark batch file. There are 4 components:
- Where the program is located and the call to the program
 - Where the MicroMark mark batch file is located (follows the MR)
 - Where the OrderSettings.txt is located (follows the D)
 - Where the JobSettings.txt is located (follows the AJ)

Example of testmrkr.mrk + OrderSettings.txt + MarkJobSettings.txt



```

TestMrkr.bat - Notepad
File Edit Format View Help
@echo on

cd C:\Program Files\Gerber Technology\AccuMark V8\MMAMBatch

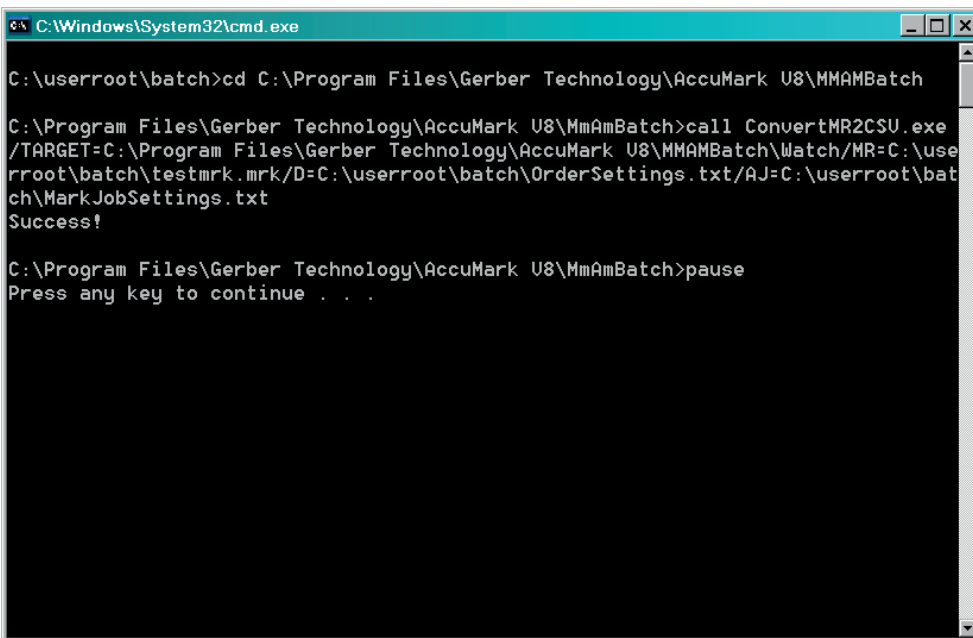
call ConvertMR2CSV.exe /TARGET=C:\Program Files\Gerber Technology\AccuMark V8\MMAMBatch\watch/
MR=C:\userroot\batch\testmrk.mrk/D=C:\userroot\batch\OrderSettings.txt/AJ=C:
\userroot\batch\MarkJobSettings.txt
pause

@echo off

```

This example has Word Wrap on to be able to see in this document, but it should not be on in the actual file.

Process this .bat file by double clicking on the file name or running manually in a Command window. A pause was put in the file so that you can see the messages generated. If you see ‘Success!’, then the job was submitted into the Accumark Batch program.



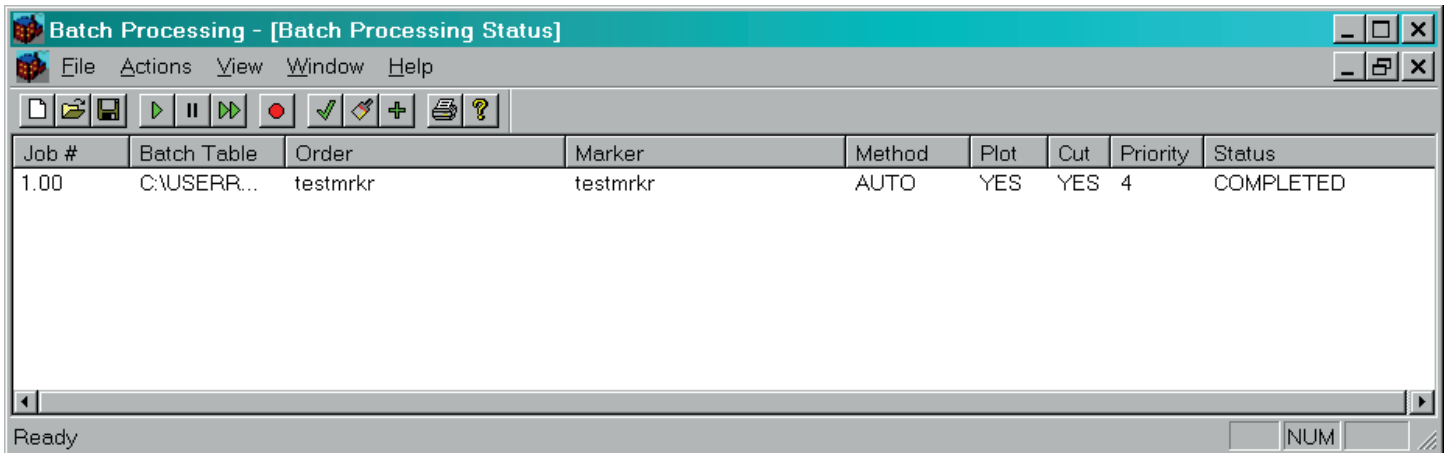
```

C:\Windows\System32\cmd.exe
C:\userroot\batch>cd C:\Program Files\Gerber Technology\AccuMark U8\MMAMBatch
C:\Program Files\Gerber Technology\AccuMark U8\MmAmBatch>call ConvertMR2CSV.exe
/TARGET=C:\Program Files\Gerber Technology\AccuMark U8\MMAMBatch\watch/MR=C:\use
rroot\batch\testmrk.mrk/D=C:\userroot\batch\OrderSettings.txt/AJ=C:\userroot\bat
ch\MarkJobSettings.txt
Success!
C:\Program Files\Gerber Technology\AccuMark U8\MmAmBatch>pause
Press any key to continue . . .

```

6. XMLserver will automatically take the job from the Watch Directory and process an order file to be stored in the storage area listed in the Batch parameter table which is Data70 for this example. Then it will also submit the order to Accumark Batch. Batch will then process the order to a marker, make it, and plot and cut if desired. Or in the case of draw or cut only, it will tell the marker how to plot or cut.

Note: if there is an error with the xml file conversion to an order, then the xml file will be stored in the Failed folder (C:\Program Files\Gerber Technology\AccuMark V8\MmAmBatch\Failed).



Right Click on the name of the Batch Table, Order, and Marker to open the file directly from the Batch screen. For more instruction about using AccuMark Batch, look to end of this document.

Note: A new order editor, a new marker, a plotter entry and a cutter file have all been created in the AccuMark.

DEFAULTS:

Default tables used in MmAmBatch processing:

If the OrderSettings.txt is not specified in the .bat file that is processed, then it will automatically use OrderSettings.txt from the **C:\userroot\Batch** directory. If you need other variations of this table, you may edit and name them anything meaningful to you, but then you must specify the name where OrderSettings.txt is located in the .bat file.

If MarkJobSettings.txt is not specified in the .bat file, then the MmAmBatch program will look within the MicroMark batch text file being processed to locate the keywords 'Mark', 'Draw', or 'Creat'. Mark will trigger the MarkJobSettings.txt from the C:\userroot\Batch directory to be used. Draw will bring the DrawJobSettings.txt to be used. Creat will activate the CutJobSettings.txt to be used. So set these tables up after this example with the batch table for each process that will most be used. You can edit and save as many of these jobsettings.txt files as you need and name them as you like – just be sure to put the correct name in the .bat file where the *JobSetting.txt file name is.

The following is the **mrk-defaults.bat**, which is included on your system of the batch job using defaults.

以上内容仅为本文档的试下载部分，为可阅读页数的一半内容。如要下载或阅读全文，请访问：<https://d.book118.com/125010104132011310>