

GENERAL**Operational Hours****ATS Hours / AD OPS Hours:** H24**AD ADMIN Hours:** MON-FRI 0540-1420, SAT/SUN/HOL CLSD**Airport Information****RFF:** CAT 8**Fuel:** RT**PCN:** RWY 13/31: 50/R/B/W/T**Operation****Low Visibility Procedure**

LVP in force when RVR at or below 600m.

Advanced Surface Movement Guidance and Control System (A-SMGCS) is in use.

Report on LDG and RWY vacation.

Waiting behind the stop bars with indexes 13 CAT I / 31 CAT II is prohibited without additional instructions.

TKOF of code letter C and D ACFT in LVP is carried out only from RWY extremity.

TKOF of code letter A and B ACFT is permitted only O/R.

Taxing with follow-me only.

Standard Taxi Routes**Arrival RWY 13**

when vacating RWY via TWY P:

to stands 1-2: TWY P, TWY C, TWY D or TWY P, TWY F, TWY D.

to stands 3-11: TWY P, TWY F, TWY D or TWY P, TWY C, TWY D.

to stands 12-18: TWY P, TWY F, TWY D, TWY V, TWY R or TWY P, TWY F, TWY D, TWY R, TWY V or TWY P, TWY C, TWY D, TWY V, TWY R.

to stands 19-27 (27A, 27 B): TWY P, TWY F, TWY D, TWY M.

to stands 37 (37A, 37 B) - 41 (41A, 41B): TWY P, TWY F, TWY K or TWY P - TWY L - TWY L1.

to stand 42-51: TWY P, TWY F, TWY H or TWY P, TWY L, TWY L1, TWY H.

when vacating RWY via TWY L:

to stands 1-2: TWY L, TWY C, TWY D or TWY P, TWY F, TWY D.

to stands 3-11: TWY L, TWY L1, TWY K, TWY D or TWY L, TWY F, TWY D.

to stands 12-18: TWY L, TWY L1, TWY K, TWY D, TWY V, TWY R or TWY L, TWY L1, TWY K, TWY D, TWY R, TWY V or TWY P, TWY C, TWY D, TWY V, TWY R.

to stands 19-27 (27A, 27B): TWY L, TWY L1, TWY K, TWY D, TWY M or TWY L, TWY F, TWY D, TWY M.

to stands 37 (37A, 37 B) - 41 (41A, 41B): TWY L, TWY L1, TWY K or TWY L, TWY F, TWY K.

to stand 42-51: TWY L, TWY L1, TWY H or TWY L, TWY F, TWY H.

GENERAL

Arrival RWY 31

when vacating RWY via TWY P:

to stands 1-11: TWY P, TWY F, TWY D or TWY P, TWY C, TWY D.

to stands 12-18: TWY P, TWY F, TWY D, TWY V, TWY R or TWY P, TWY F, TWY D, TWY R, TWY V or TWY P, TWY C, TWY D, TWY V, TWY R.

to stands 19-27 (27A, 27 B): TWY P, TWY F, TWY D, TWY M.

to stands 37 (37A, 37 B) - 41 (41A, 41B): TWY P, TWY F, TWY K or TWY P, TWY L, TWY L1, TWY K.

to stand 42-51: TWY P, TWY F, TWY H or TWY P, TWY L, TWY L1, TWY H.

when vacating RWY via TWY B or TWY A:

to stands 1-11: TWY B / TWY A, TWY D.

to stands 12-18: TWY B / TWY A, TWY D, TWY V, TWY R or TWY B / TWY A, TWY D, TWY R, TWY V.

to stands 19-27 (27A, 27 B): TWY B / TWY A, TWY D, TWY M or TWY B / TWY A, TWY C, TWY F, TWY D, TWY M.

to stands 37 (37A, 37 B) - 41 (41A, 41B): TWY B / TWY A, TWY D, TWY K or TWY B / TWY A, TWY C, TWY F, TWY K.

to stand 42-51: TWY B / TWY A, TWY D, TWY F, TWY H or TWY B / TWY A, TWY C, TWY F, TWY H.

Departure RWY 13

from stands 1-11: TWY D, TWY A / TWY B.

from stands 12-13: TWY V, TWY D, TWY A / TWY B.

from stands 14-27 (27A, 27 B): TWY R, TWY V, TWY D, TWY A / TWY B or TWY R, TWY D, TWY A / TWY B.

from stands 37 (37A, 37 B) - 41 (41A, 41B): TWY K, TWY D, TWY A / TWY B or TWY K, TWY F, TWY C, TWY A / TWY B or TWY K, TWY L1, TWY L, TWY C, TWY A / TWY B.

from stands 42-51: TWY K, TWY L1, TWY L, TWY C, TWY A / TWY B or TWY K, TWY F, TWY C, TWY A / TWY B or TWY K, TWY D, TWY A / TWY B.

Departure RWY 31

from stands 1-4: TWY D, TWY C, TWY L.

from stands 5-11: TWY D, TWY K, TWY L1, TWY L or TWY D, TWY F, TWY L.

from stands 12-13: TWY V, TWY D, TWY K, TWY L1, TWY L.

from stands 14-27 (27A, 27B): TWY R, TWY D, TWY K, TWY L1, TWY L or TWY R, TWY D, TWY F, TWY L.

from stands 37 (37A, 37 B) - 41 (41A, 41B): TWY K, TWY L1, TWY L or TWY K, TWY F, TWY L.

from stands 42-51: TWY K, TWY L1, TWY L or TWY K, TWY F, TWY L.

Taxi/Parking

Movement shall be carried out under own engines power or by towing.

Stands 37 (37A, 37 B) - 41 (41A, 41B): ACFT shut down engines abeam the stand and is installed to the stand by a tow.

Warnings

Birds in vicinity of AD.

ARRIVAL**Communication****COM Failure**

COM failure after entry into TMA: Continue according last assigned FL towards LOM or VOR. Descend not before ETA. Land within 30min after ETA. If communication fails at moment of APCH when meteorological conditions below MNM pilot has right to land under current conditions.

If LDG at DEP AD impossible the crew has the right after MISAP to proceed to DEST AD according FPL or to proceed to ALTN AD at FL selected by the crew, not below MNM safe ALT.

Arrival Procedure**Noise Abatement Procedure**

In case of unfavourable meteorological conditions in ARR and APCH sectors, NAP during APCH phase shall not be carried out.

During instrument and visual APCH, flying below the ILS GP is not allowed.

No NAP shall prescribe the exceeding of indicated rate of descent.

Non-standard GP Intercept Position on**RWY 13**

GP intercept RWY 13 at *320m / 1049ft* after landing threshold.

Remaining LDG DIST beyond GP is *3321m / 10897ft*.

RWY 31

GP intercept RWY 31 at *343m / 1126ft* after landing threshold.

Remaining LDG DIST beyond GP is *3298m / 10820ft*.

Warnings

Several ADs located W of Minsk 2 not to be mistaken with Minsk 2.

SW RWY shoulders can be used for EMERG LDG.

DEPARTURE**Take-off Minima**

RWY		13/31	
All ACFT	ft - m/km	0 - 125R	-

Communication**COM Failure**

COM failure after TKOF: Operate according APCH pattern and land at DEP AD. In this case crew has right to land below MNM meteorological conditions. Listen on COM frequency to obtain ATC instructions.

If LDG at DEP AD impossible the crew has the right after MISAP to proceed to DEST AD according FPL or to proceed to ALTN AD at FL selected by the crew, not below MNM safe ALT.

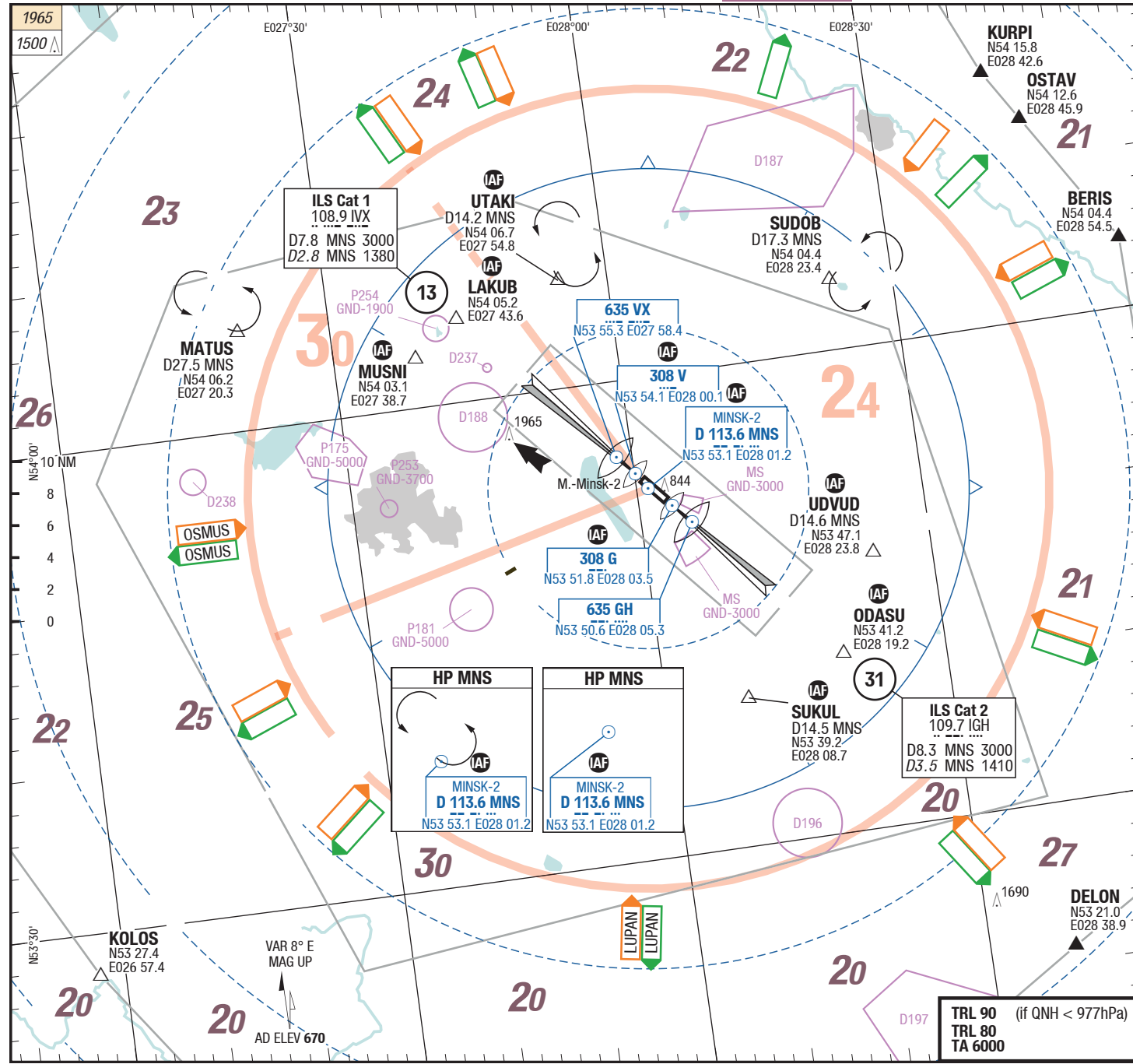
COM failure while climbing to FL/ALT: ICAO standard.

Departure Procedure**Noise Abatement Procedure**

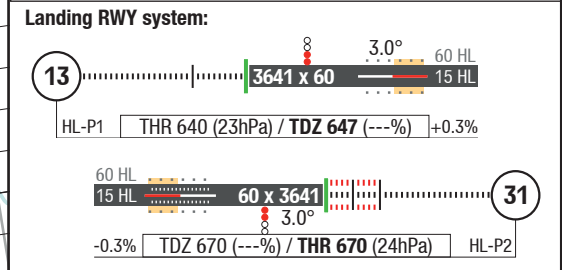
NAP shall not be carried out in case of forecasted or expected wind shear or downward gusts.

De-Icing

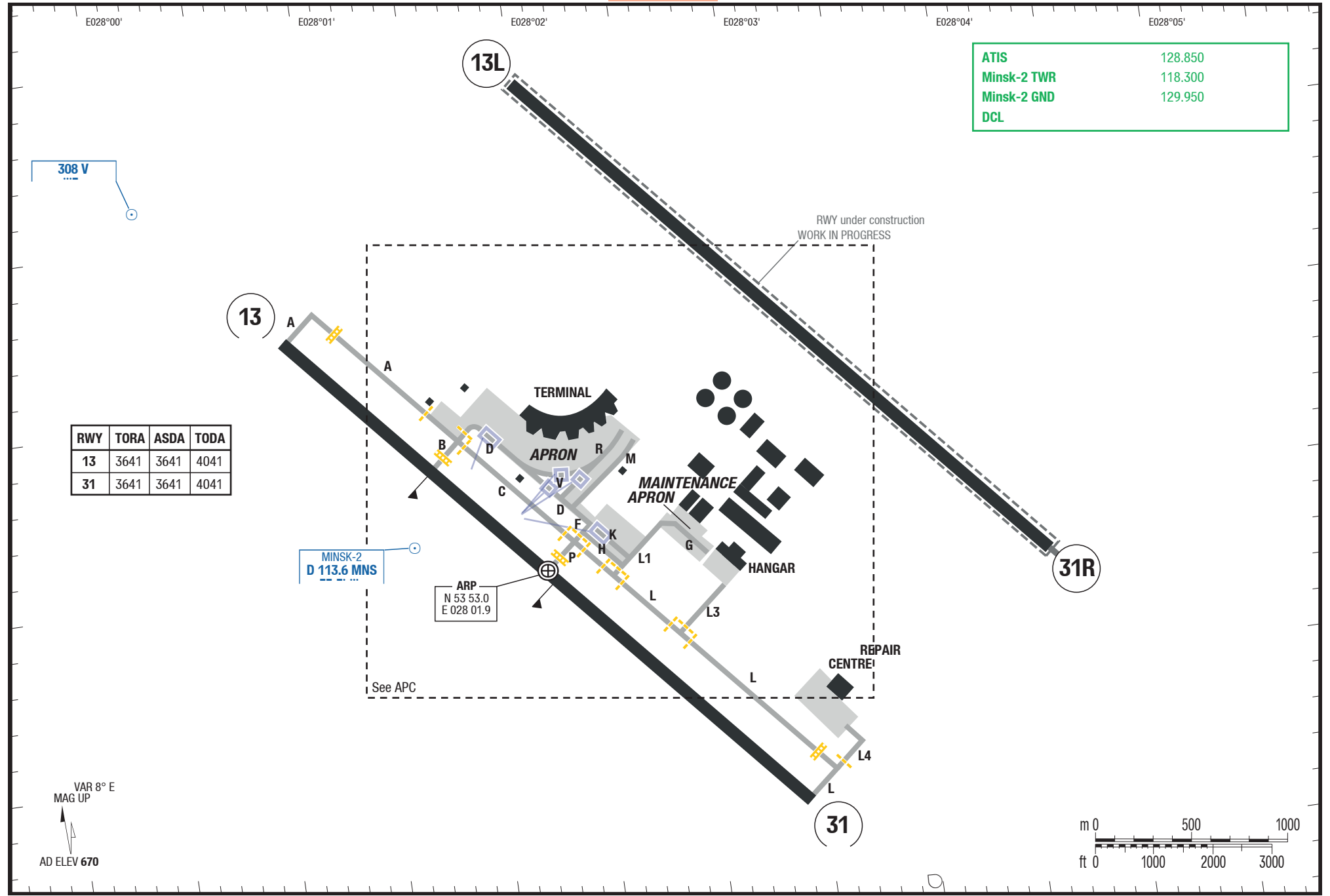
AVBL



ATIS	128.850
RAD	125.250 0700-1800
APP	125.900 serves as RAD 1800-0700
Minsk-2 TWR	118.300
Minsk-2 GND	129.950
DCL	



3-20



ATIS	128.850
Minsk-2 TWR	118.300
Minsk-2 GND	129.950
DCL	

RWY	TORA	ASDA	TODA
13	3641	3641	4041
31	3641	3641	4041

VAR 8° E
MAG UP
AD ELEV 670

Effective 19-JUL-2018

12-JUL-2018

MSQ-UMMS

3-30

Belarus Minsk Minsk-2

Stand Coordinates

APC

APC

APC

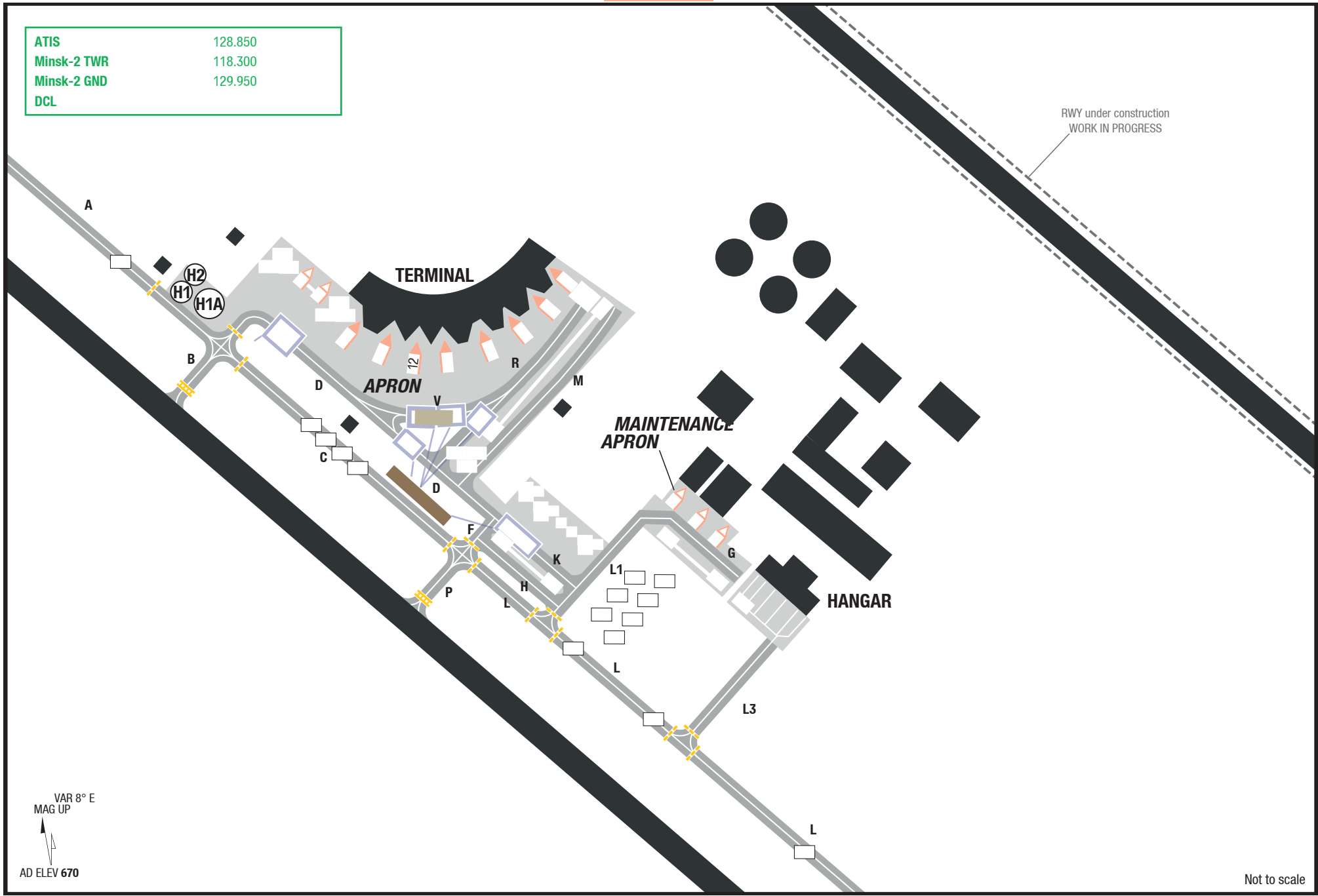
Minsk-2 Minsk Belarus

Stand Coordinates

APC

ATIS	128.850
Minsk-2 TWR	118.300
Minsk-2 GND	129.950
DCL	

RWY under construction
WORK IN PROGRESS



VAR 8° E
MAG UP

AD ELEV 670

Not to scale

Changes: new

以上内容仅为本文档的试下载部分，为可阅读页数的一半内容。如要下载或阅读全文，请访问：<https://d.book118.com/138064120102006132>