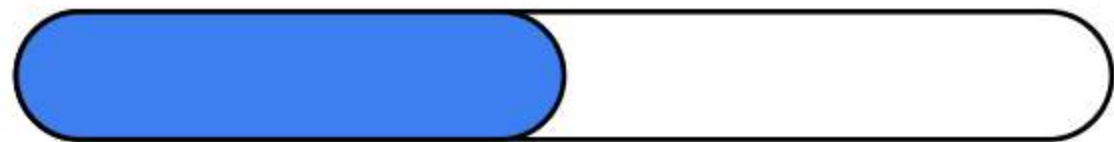


# prove的用法总结





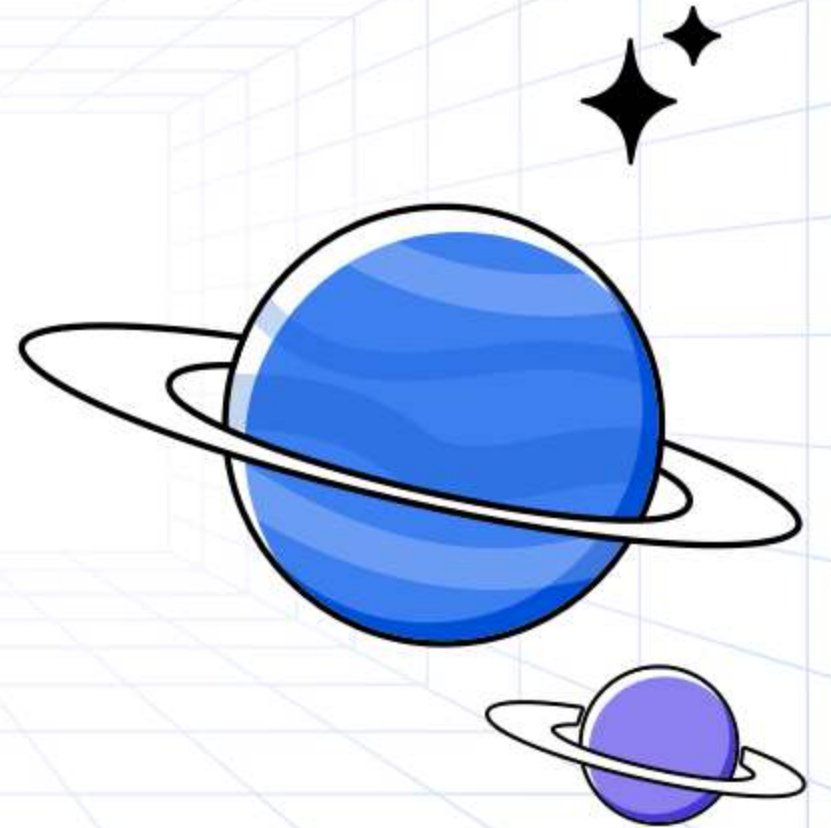
# 目录

CONTENTS

- 引言
- prove作动词的用法
- prove作形容词的用法
- prove与其他词语的搭配
- prove的常见错误用法
- 总结与提高

01

인간





# 目的和背景



## 提高证明能力

学习和掌握prove的用法，有助于增强逻辑推理和证明能力，从而更好地理解和应用数学知识。

## 应对考试要求

在数学考试中，经常需要运用prove进行证明，因此熟练掌握其用法对于取得好成绩至关重要。



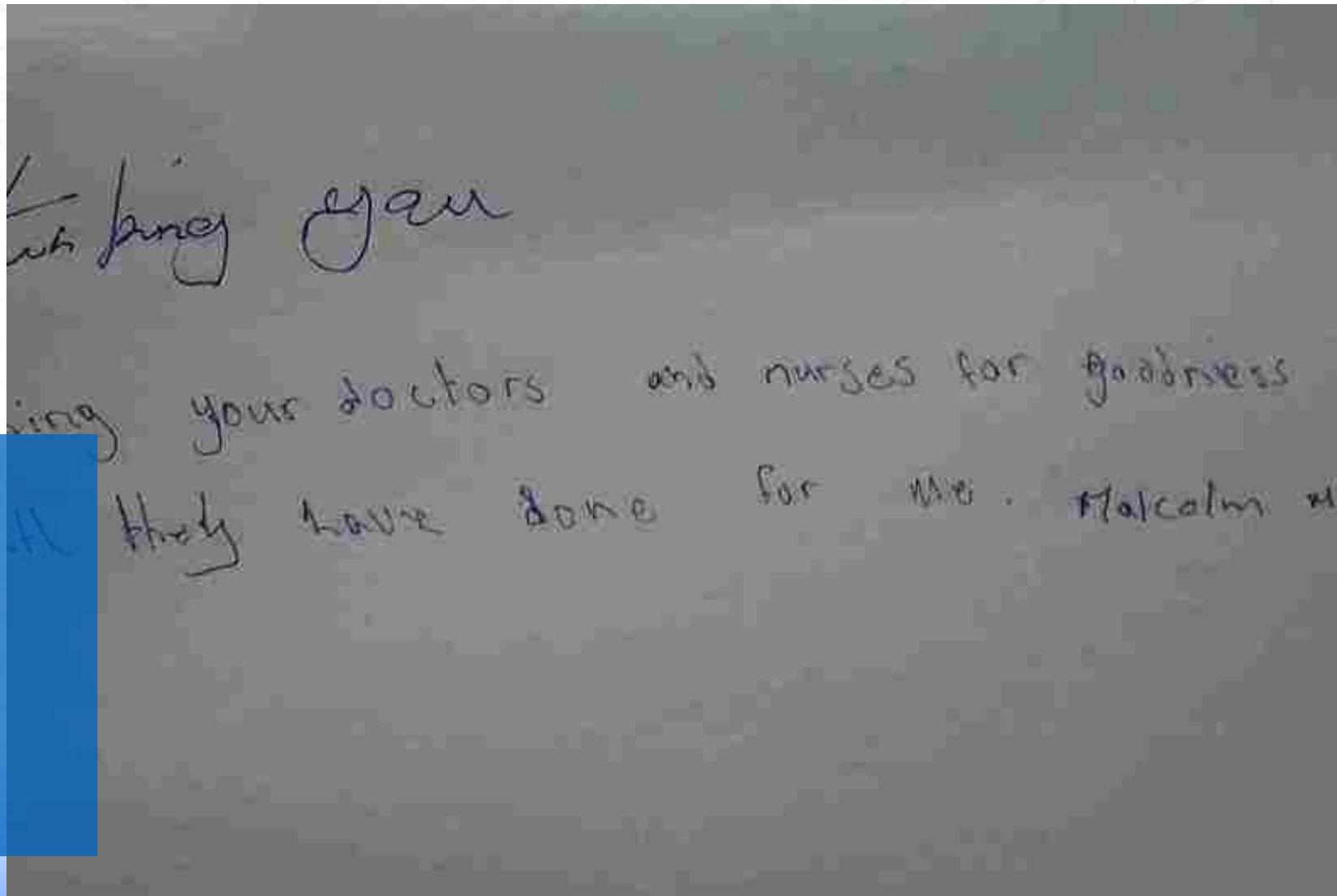
# prove的基本含义

## 证明

prove的基本含义是“证明”，即通过逻辑推理、演绎等方法，验证某个命题、定理或结论的正确性。

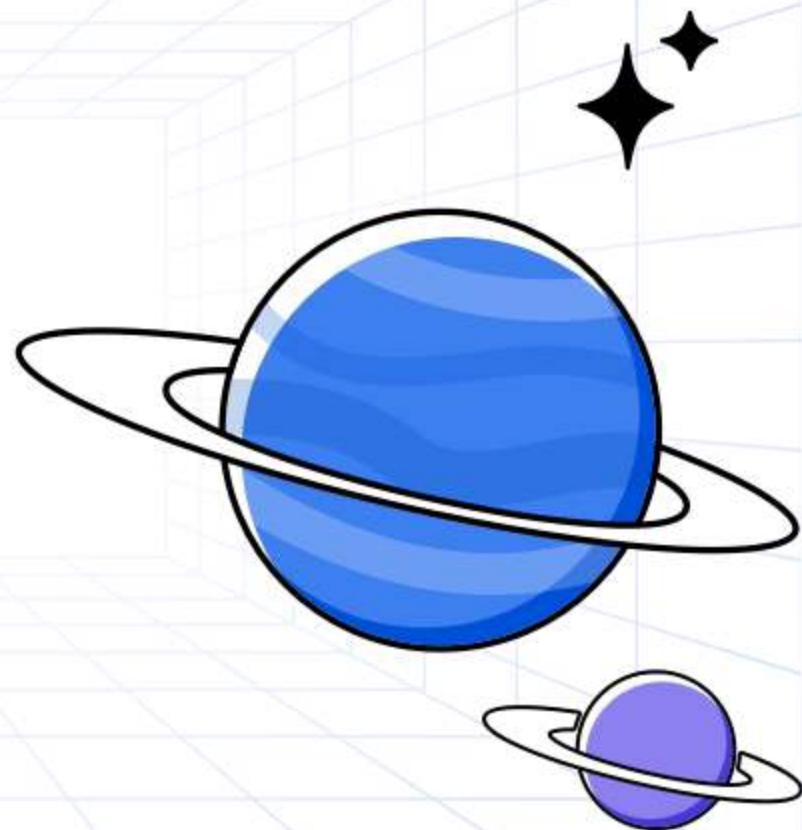
## 证实

除了“证明”外，prove还可以表示“证实”，即提供证据或事实来支持某个观点或说法。



02

# prove作动词的用法





## 及物动词

### prove + 名词/代词

---

证明某事的真实性或正确性。例如：He proved his innocence by providing alibi evidence. (他通过提供不在场证明证实了自己的清白。)

### prove + 从句

---

证明从句所表达的内容。例如：She proved that she was right by showing us the data. (她通过向我们展示数据证明了自己是正确的。)



# 不及物动词



## prove + 形容词/副词

表明某物或某人的性质或状态。例如：The evidence proves conclusive. ( 证据确凿。 )



## prove + to be + 名词/形容词

证明是某种身份或具有某种特征。例如：He proved to be a reliable friend. ( 他证明了自己是一个可靠的朋友。 )





# 双宾动词

## 要点一

### prove + 间接宾语 + 直接宾语

向某人证明某事。例如：I will prove to you that I am capable of handling this project. (我会向你证明我有能力处理这个项目。)

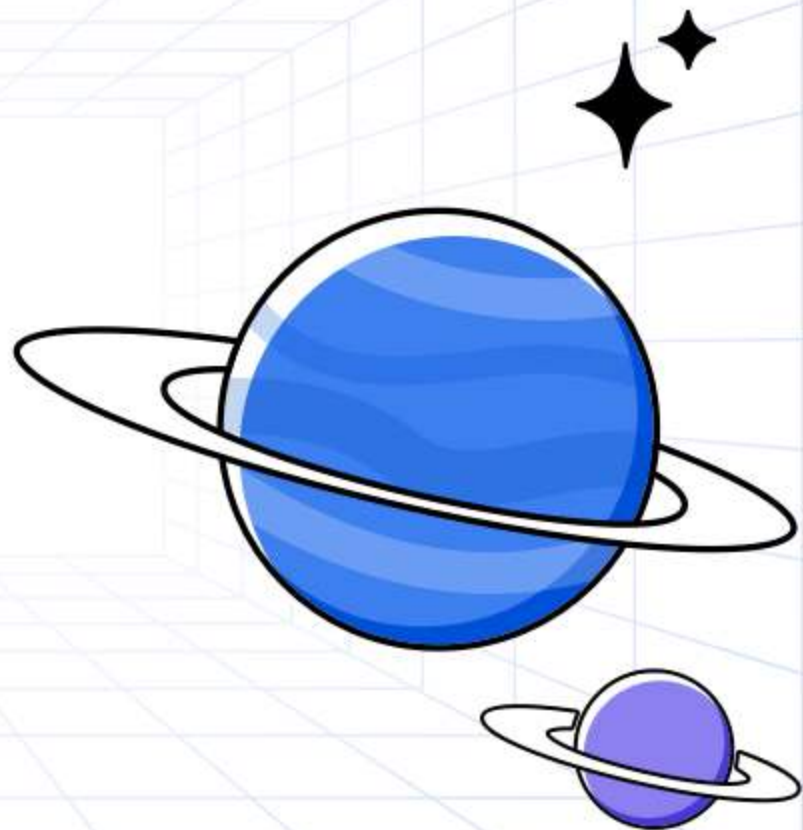
## 要点二

### prove + 直接宾语 + to + 间接宾语

证明某事给某人看。例如：She proved her loyalty to the company by working overtime without complaint. (她通过毫无怨言地加班证明了自己对公司的忠诚。)

03

# prove作形容词的 用法





# 修饰名词

prove作为形容词可以修饰名词，表示“被证实的”或“确凿的”。

例如：prove facts（被证实的事实）、  
prove evidence（确凿的证据）。

saved without PDF content.  
To place or open this file in other applications, it should be re-saved from Adobe Illustrator with the "Create PDF Compatible File" option turned on. This option is in the Illustrator Native Format Options dialog box, which appears when saving an Adobe Illustrator file using the Save As command.

saved without PDF content.  
To place or open this file in other applications, it should be re-saved from Adobe Illustrator with the "Create PDF Compatible File" option turned on. This option is in the Illustrator Native Format Options dialog box, which appears when saving an Adobe Illustrator file using the Save As command.

saved without PDF content.  
To place or open this file in other applications, it should be re-saved from Adobe Illustrator with the "Create PDF Compatible File" option turned on. This option is in the Illustrator Native Format Options dialog box, which appears when saving an Adobe Illustrator file using the Save As command.

This is an Adobe® Illustrator® file that was saved without PDF content.  
To place or open this file in other applications, it should be re-saved from Adobe Illustrator with the "Create PDF Compatible File" option turned on. This option is in the Illustrator Native Format Options dialog box, which appears when saving an Adobe Illustrator file using the Save As command.

This is an Adobe® Illustrator® file that was saved without PDF content.  
To place or open this file in other applications, it should be re-saved from Adobe Illustrator with the "Create PDF Compatible File" option turned on. This option is in the Illustrator Native Format Options dialog box, which appears when saving an Adobe Illustrator file using the Save As command.

This is an Adobe® Illustrator® file that was saved without PDF content.  
To place or open this file in other applications, it should be re-saved from Adobe Illustrator with the "Create PDF

This is an Adobe® Illustrator® file that was saved without PDF content.  
To place or open this file in other applications, it should be re-saved from Adobe Illustrator with the "Create PDF

This is an Adobe® Illustrator® file that was saved without PDF content.  
To place or open this file in other applications, it should be re-saved from Adobe Illustrator with the "Cr



## 作表语



prove作为形容词也可以作表语，表示主语的特征或状态。

例如：The facts proved to be true. (事实被证实是真的。)



# 用于比较级和最高级

http://www.w3.org/1999/xlink  
/6 841.89"

841.89L 1600 841.89L 1600 -1458.11L 0 -1458.11z"/>  
1L 713 -1419.11L 714 -1419.11C 713.749 -1420.56 713.685 -1420.86 713 -1422.11zM 1567 -1382.11C 1567.98 -1380.33 1567.91  
-1379.39 554.333 -1379.44C 554.778 -1379.89 553.722 -1379.83 553.667 -1379.78zM 1571 -1380.11L 1571 -1379.11L 1574 -1379.11L 1489 -1370.11L 1489 -1371.11L 1485 -1371.11L 1485 -1372.11L 1509 -1372.11C 1503.97 -1374.22 1485.86 -1375.67 1484 -1  
11L 1488 -1373.11L 1492 -1373.11C 1490.49 -1373.79 1489.69 -1373.94 1488 -1374.11zM 1509 -1373.11L 1509 -1372.11L 1515  
1C 1531.23 -1372.89 1529.96 -1373.02 1528 -1373.11z"/>  
3.11L 1533 -1372.11L 1538 -1372.11C 1536.23 -1372.89 1534.96 -1373.02 1533 -1373.11z"/>  
11L 1538 -1372.11L 1543 -1372.11C 1541.23 -1372.89 1539.96 -1373.02 1538 -1373.11z"/>  
1.11L 1485 -1371.11L 1504 -1371.11C 1498.53 -1373.41 1490.9 -1372.11 1485 -1372.11z"/>  
.11L 1502 -1370.11L 1510 -1370.11C 1507.27 -1372.15 1505.27 -1371.86 1502 -1371.11z"/>  
2.11L 1509 -1371.11L 1514 -1371.11C 1512.23 -1371.89 1510.96 -1372.02 1509 -1372.11z"/>  
.11L 1514 -1371.11L 1530 -1371.11C 1525.28 -1373.09 1519.09 -1372.11 1514 -1372.11z"/>  
.11L 1522 -1370.11C 1526.88 -1368.67 1531.45 -1368.74 1536 -1371.11C 1531.76 -1372.84 1526.55 -1371.15 1522 -1371.11z"/>  
3.11L 1544 -1369.11L 1544 -1372.11C 1540.08 -1372.1 1536.42 -1372.53 1534 -1369.11z"/>  
2.11L 1544 -1371.11L 1554 -1371.11C 1550.84 -1372.44 1547.41 -1372.11 1544 -1372.11z"/>  
1.11L 1489 -1370.11L 1492 -1370.11C 1490.75 -1370.8 1490.45 -1370.86 1489 -1371.11zM 1497 -1371.11L 1497 -1370.11L 1502  
.11L 1510 -1370.11L 1522 -1370.11C 1518.3 -1371.66 1513.98 -1371.11 1510 -1371.11z"/>  
1.11L 1538 -1370.11L 1542 -1370.11C 1540.49 -1370.79 1539.69 -1370.94 1538 -1371.11zM 1544 -1371.11C 1545.88 -1368.64 154  
1.11L 1546 -1370.11C 1548.06 -1369.62 1549.14 -1369.16 1551 -1368.11L 1554 -1370.11C 1551.39 -1371.21 1548.83 -1371.1 154  
11L 1485 -1369.11L 1490 -1369.11C 1488.23 -1369.89 1486.96 -1370.02 1485 -1370.11z"/>  
).11L 1490 -1369.11L 1507 -1369.11C 1502.03 -1371.2 1495.36 -1370.11 1490 -1370.11z"/>  
)11L 1507 -1369.11L 1528 -1368.11C 1521.7 -1371.14 1513.83 -1370.11 1507 -1370.11z"/>  
369.44C 1552.28 -1369.39 1552.22 -1368.33 1552.67 -1368.78C 1552.72 -1368.83 1552.78 -1369.89 1552.33 -1369.44z"/>  
11L 1507 -1368.11L 1510 -1368.11C 1508.75 -1368.8 1508.45 -1368.86 1507 -1369.11z"/>  
3.11L 1510 -1368.11L 1514 -1368.11C 1512.49 -1368.79 1511.69 -1368.94 1510 -1369.11z"/>  
11L 1528 -1368.11L 1532 -1368.11C 1530.49 -1368.79 1529.69 -1368.94 1528 -1369.11z"/>  
68.78C 1532.22 -1368.33 1533.28 -1368.39 1533.33 -1368.44C 1533.78 -1368.89 1532.72 -1368.83 1532.67 -1368.78z"/>  
11L 1537 -1368.11L 1547 -1368.11C 1543.84 -1369.44 1540.41 -1369.11 1537 -1369.11z"/>  
11L 1521 -1367.11L 1526 -1367.11C 1524.23 -1367.89 1522.96 -1368.02 1521 -1368.11zM 1545.67 -1367.78C 1545.22 -1367.33  
1L 1547 -1367.11L 1551 -1367.11C 1549.49 -1367.79 1548.69 -1367.94 1547 -1368.11z"/>  
1556 -1232.11L 1558 -1232.11L 1558 -1234.11L 1556 -1234.11zM 1578 -1229.11L 1578 -1227.11L 1580 -1227.11L 1580  
94 -1224.25 1554.84 -1224.08 1554 -1226.11zM 1485 -1225.11C 1485.08 -1222.47 1485 -1220.84 1487 -1219.11C 1

prove作为形容词可以用于比较级和最高级形式，表示程度的差异。

例如：more proved (更确凿的)、most proved (最确凿的)。

以上内容仅为本文档的试下载部分，为可阅读页数的一半内容。如要下载或阅读全文，请访问：  
<https://d.book118.com/167054152053006120>