

GENERAL

Operational Hours

ATS Hours / AD Operator Hours: 0500-2130‡

Night Restrictions

- Except delayed LDG/TKOF until 2300‡.
- ALTN LDG if AD has confirmed ready for OPS.

Airport Information

RFF: CAT 7

PCN: RWY 09/27: 58/F/A/X/T (antiskid layer)

Operation

TWY Restriction

TWY A, B width 21.5m / 71ft.

Warnings

SBN NDB unusable:

020°-060° beyond 10NM.

060°-100° beyond 20NM.

100°-160° beyond 15NM.

160°-240° beyond 28NM.

240°-020° beyond 15NM.

SR NDB unusable:

050°-280° beyond 10NM.

280°-050° beyond 8NM.

SAD DME unusable:

R225-R240 beyond 21NM below 10000ft.

R240-R225 beyond 25NM below 10000ft.

ARRIVAL

Communication

COM Failure: See CRAR.

Arrival Procedure

FMS RNAV Transitions: For FMS RNAV transitions leading to all instrument APCHs refer to best AVBL APCH PROC (IAC) leading to the respective RWY.

ILS 27: Non STD ILS due to TCH 62ft.

Non-standard GP intercept position on RWY 27

GP intercepts RWY 27 at 332m / 1088ft after landing threshold.

Remaining LDG DIST beyond GP is 1518m / 4982ft.

DEPARTURE

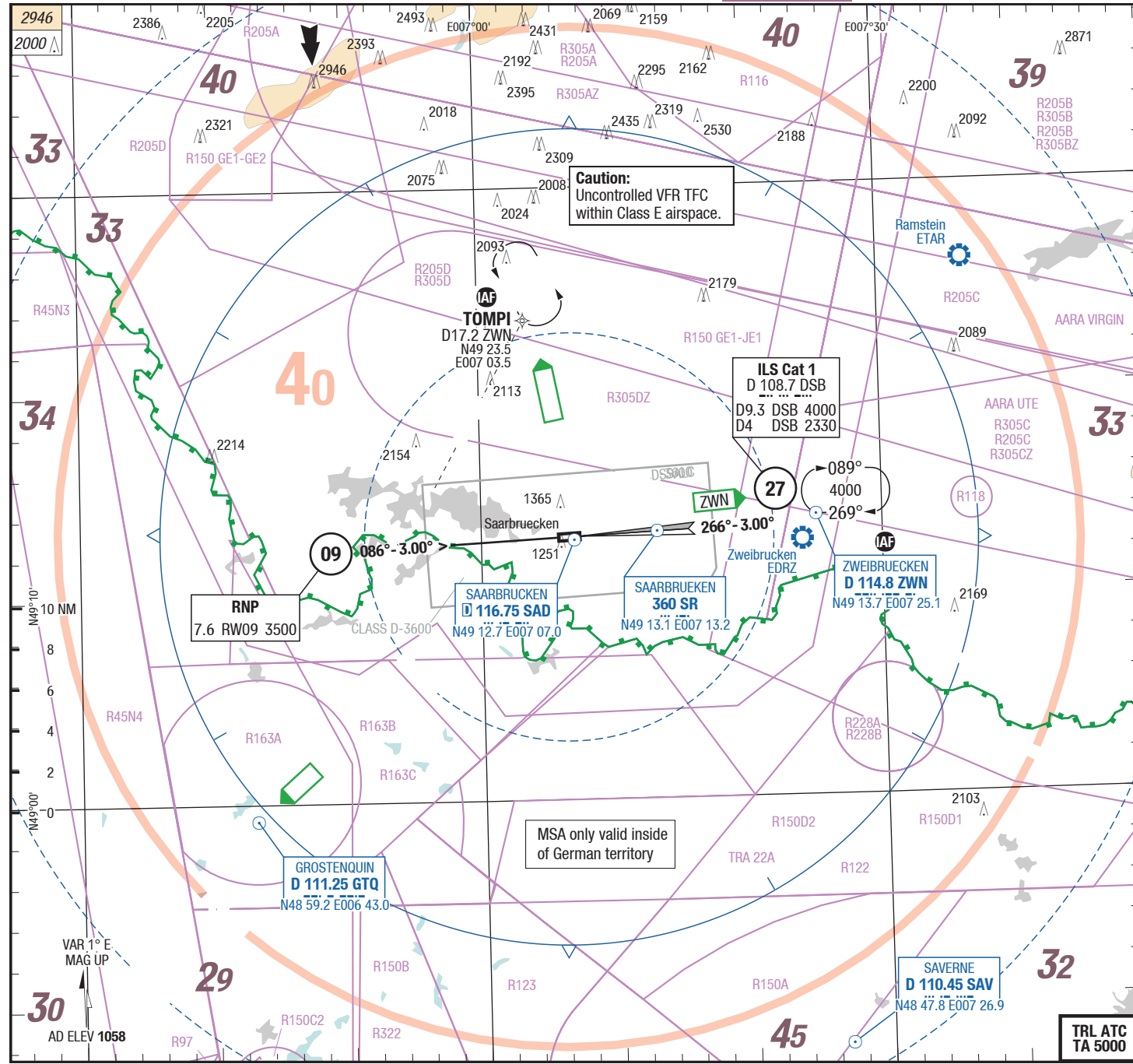
Take-off Minima

RWY		09/27	
All ACFT	ft - m/km	0 - 125R	-

Communication

COM Failure: See CRAR.

2-10



D-ATIS	125.475 0450-2120†
Langen RAD	129.675
TWR	118.350
	118.550

Landing RWY system:

09 H-N 200
 -50 1840 x 45 3.2° 60 HL
 THR 1024 (37hPa) / TDZ --- (1.1%) +0.5%

27 H-N 200
 -50 1840 x 45 3.0° 60 HL
 THR 1058 (38hPa) / TDZ --- (-0.1%) HL-P1F

Changes: Navaid

3-20

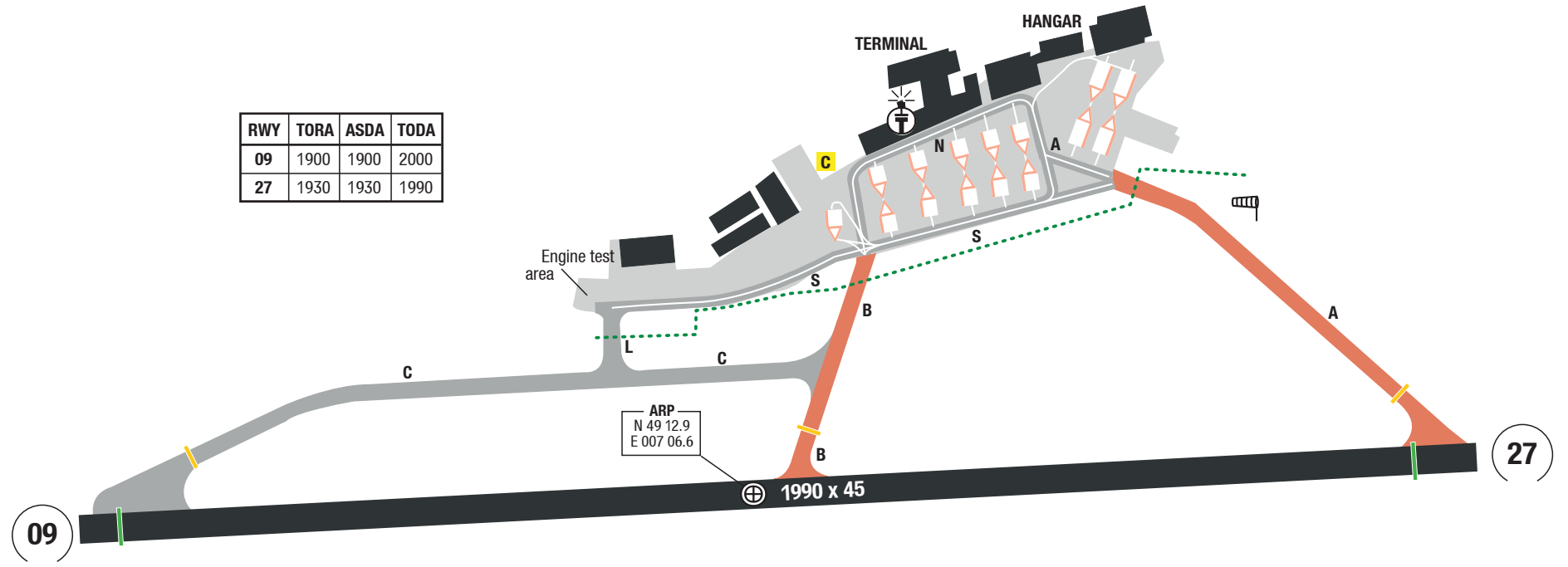
AGC

AGC
AGC

AGC

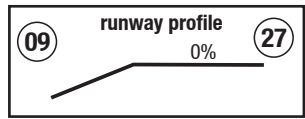
RWY	TORA	ASDA	TODA
09	1900	1900	2000
27	1930	1930	1990

D-ATIS 125.475 0450-2120‡
TWR 118.350 118.550



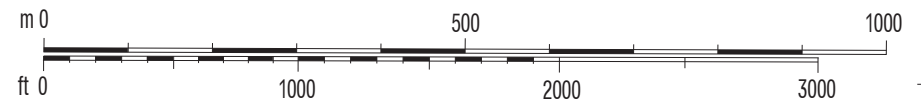
ARP
N 49 12.9
E 007 06.6

1990 x 45



SAARBRUECKEN
D 116.75 SAD

VAR 1° E
MAG UP
AD ELEV 1058



以上内容仅为本文档的试下载部分，为可阅读页数的一半内容。如要下载或阅读全文，请访问：<https://d.book118.com/167121123016006146>