

SIEMENS

Frequency Converter

 **EPLAN Macros**
Version 1.1

Installation und first steps



SINAMICS and MICROMASTER 4

1 Table of contents

1	Table of contents	2
2	Introduction.....	3
2.1	Frequency Converter Macros for EPLAN 5.70.....	3
2.2	News Version 1.1	3
3	Introduction of installation.....	4
3.1	Requirements:.....	4
3.2	Installation:	4
3.3	Configuration:	15
3.4	EPLAN Project: SIEMENS_FC_EPLAN_MACROS:	16
4	Operation instruction.....	17
4.1	Inserting macros.....	17
4.2	Macro structure	21
4.3	Macro structure cabinet	22
4.4	Workflow.....	23
4.5	Mounting panels equip.....	26
4.6	Revision of the article databases before importing	27

2 Introduction

2.1 Frequency Converter Macros for EPLAN 5.70

The setup assistant will install EPLAN 5.70 circuit diagram macros for the following SIEMENS product lines

MICROMASTER 4

SINAMICS G110

SINAMICS G120

including EPLAN article data and an EPLAN Project with circuit diagrams and examples.

These macros of mentioned products will support you in the construction phase.

2.2 News Version 1.1

You can choose the installation language “German” or English.

The following products are added:

SINAMICS G120 Powermodule PM250 and PM260

Accessories “Brake Relay”

The parts management contains the mounting clearance with, mounting clearance height and graphics macros for mounting panels equip.

3 Introduction of installation

3.1 Requirements:

MS Windows XP

EPLAN Version 5.70

One file called "SIEMENS.ZIP".

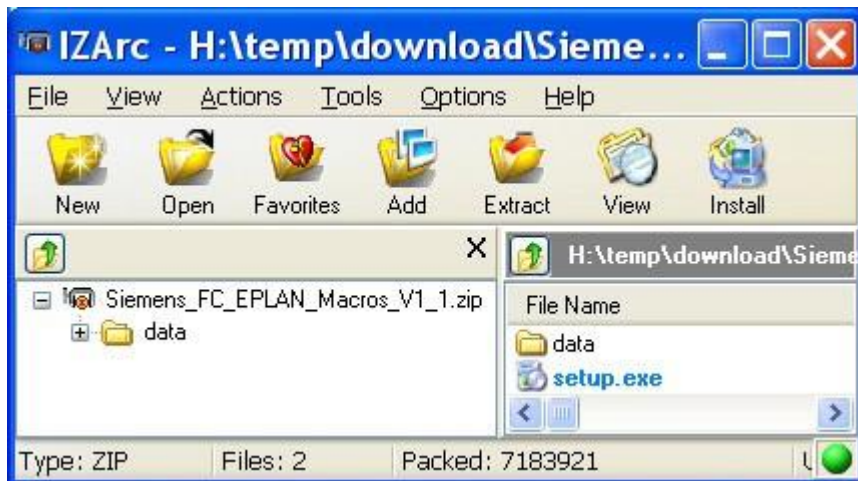
This compressed file contains all data and also the setup program.

3.2 Installation:

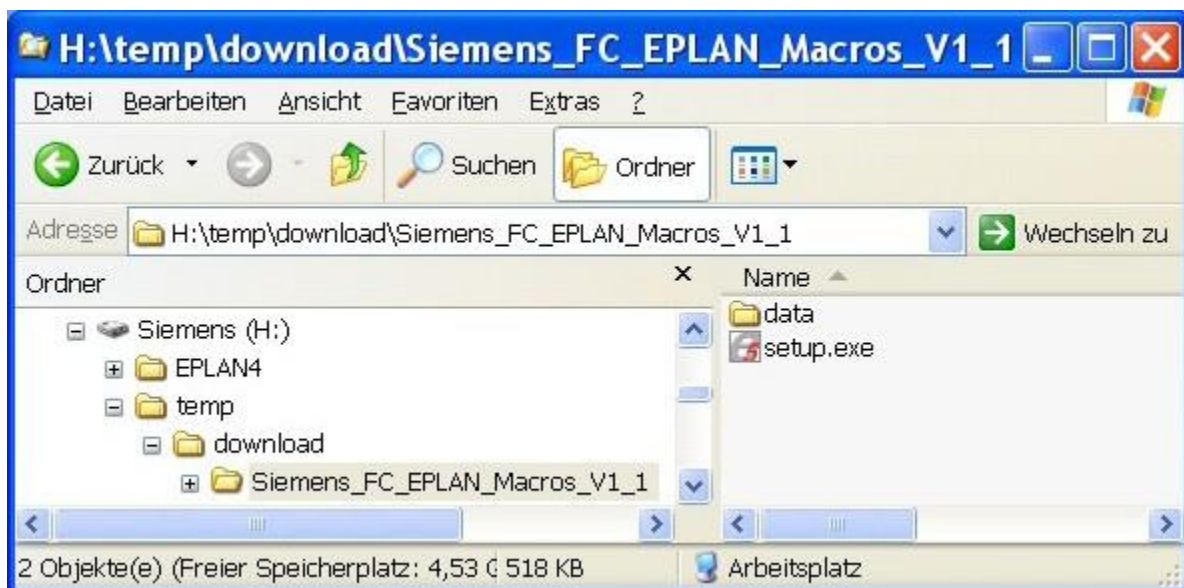
Step 1: Download



Step 2: Extract all files “SIEMENS.ZIP”



Step 3: Start setup.exe



以上内容仅为本文档的试下载部分，为可阅读页数的一半内容。如要下载或阅读全文，请访问：<https://d.book118.com/175240020100011123>