

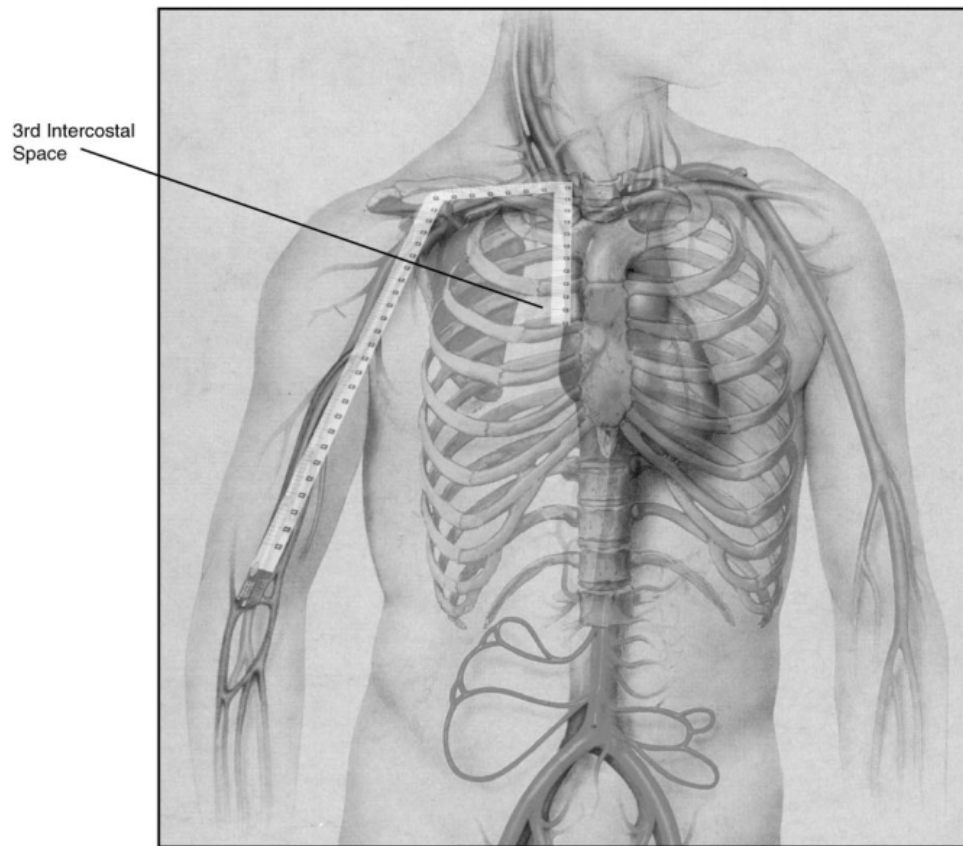
PICC管的X线定位

潘杰

北京协和医院放射科

2010年11月

上腔静脉解剖





头静脉

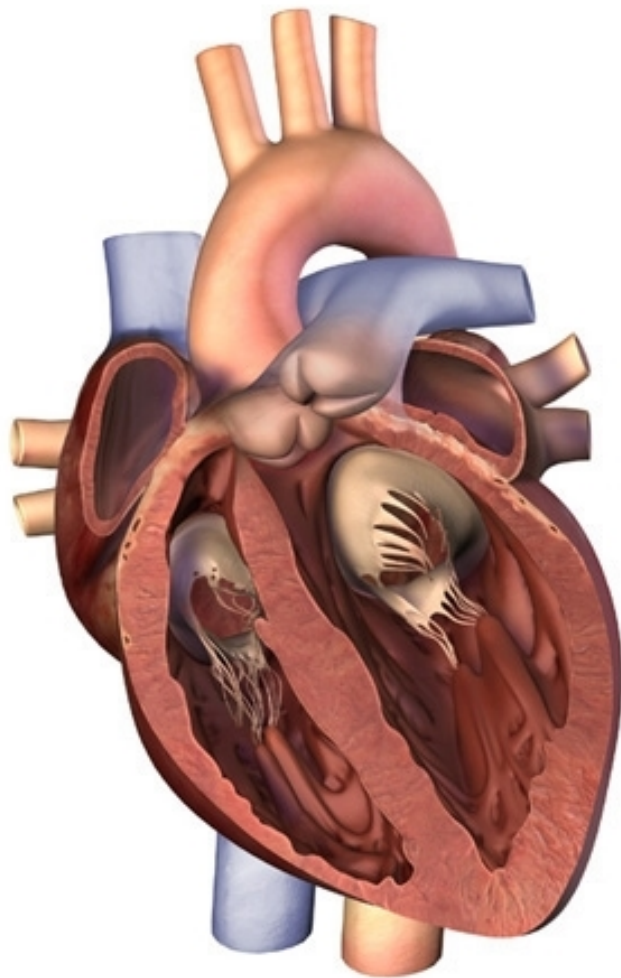
腋静脉

锁骨静脉

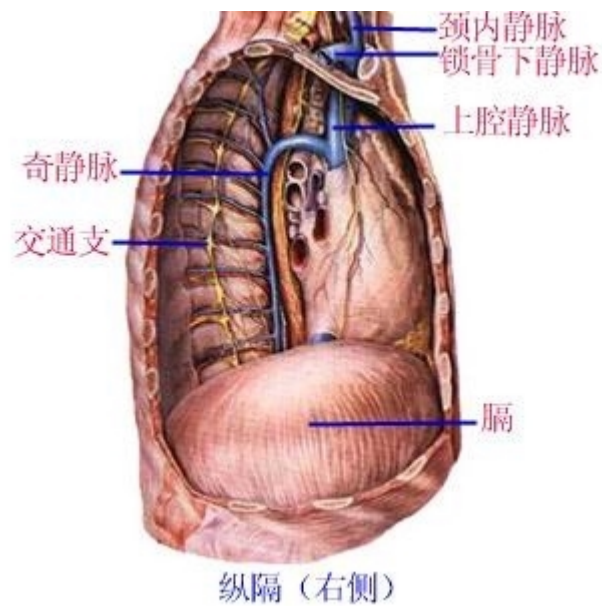
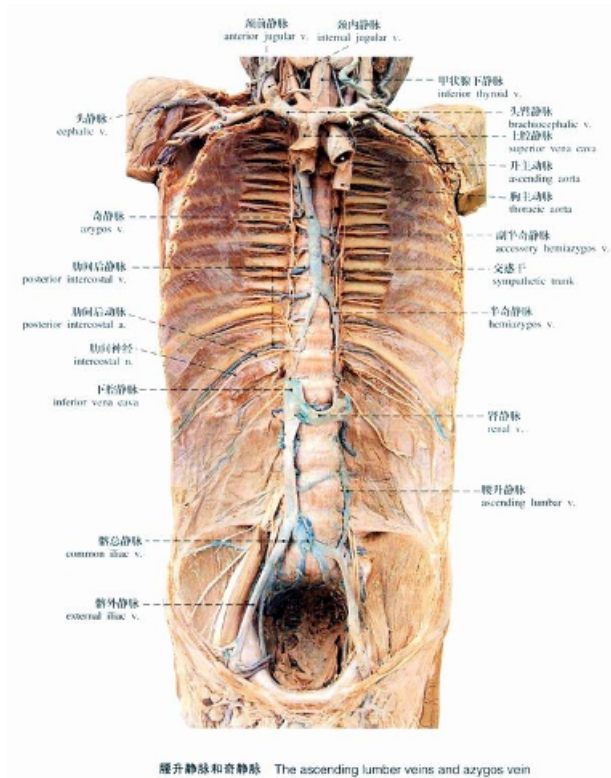
无名静脉

上腔静脉

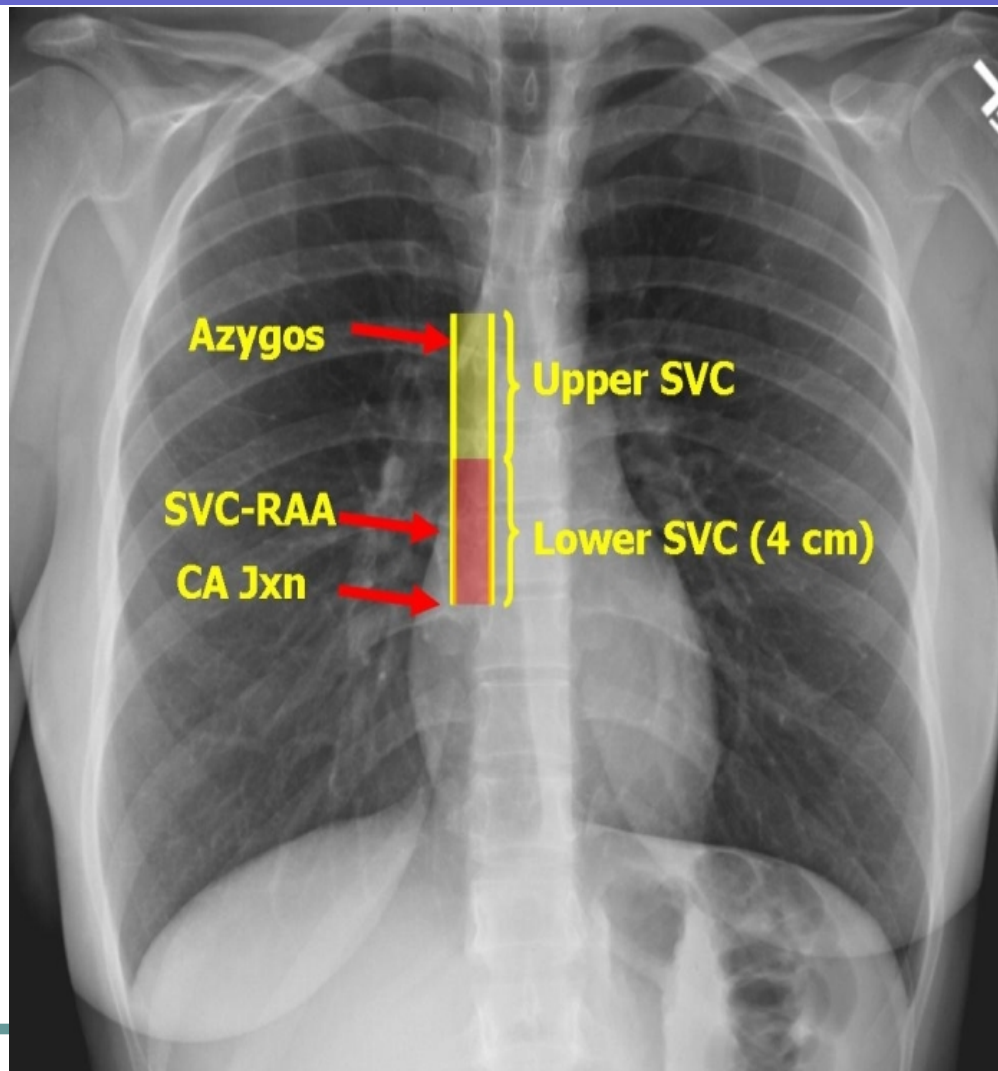
心脏解剖图



奇静脉解剖

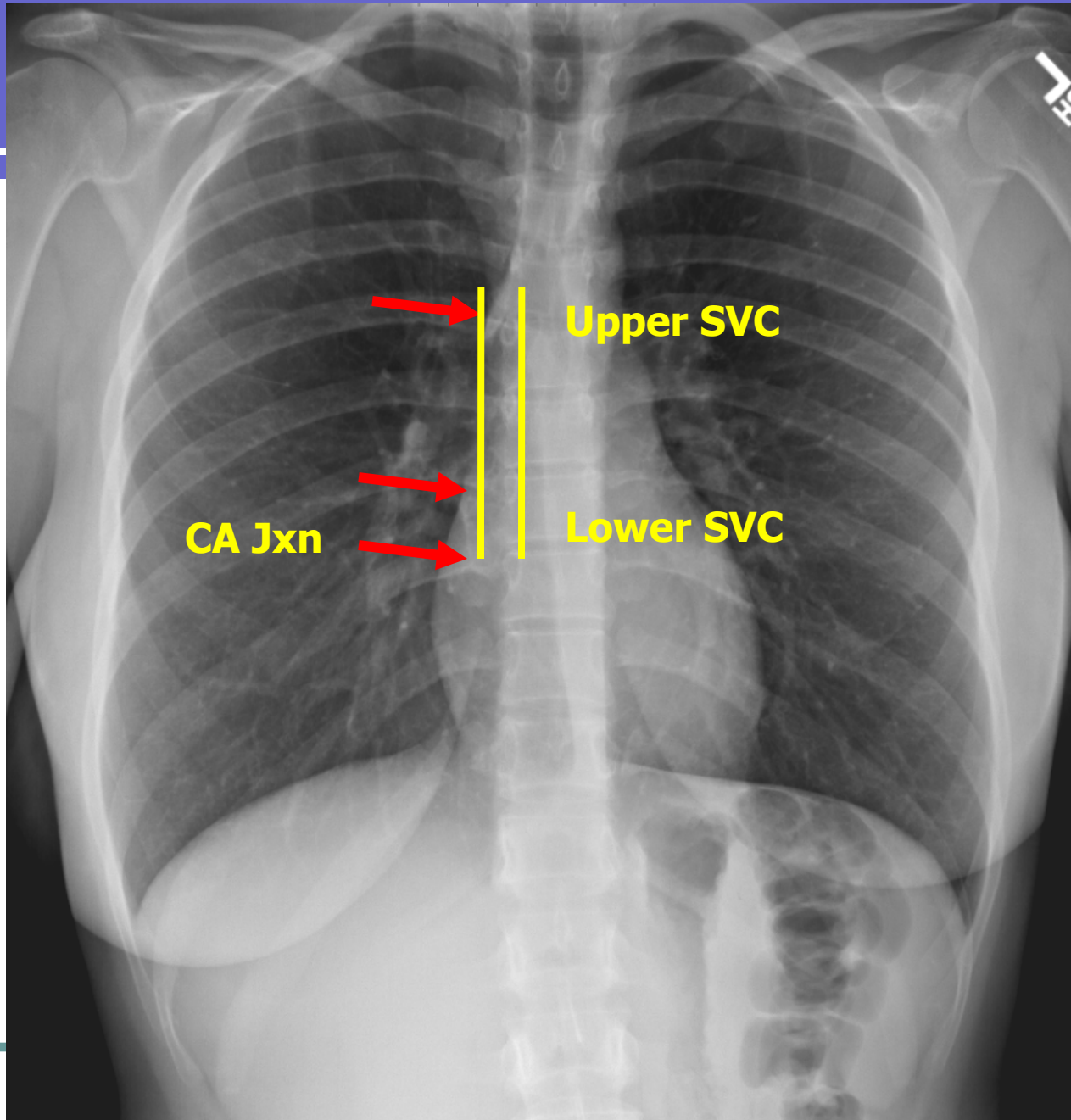


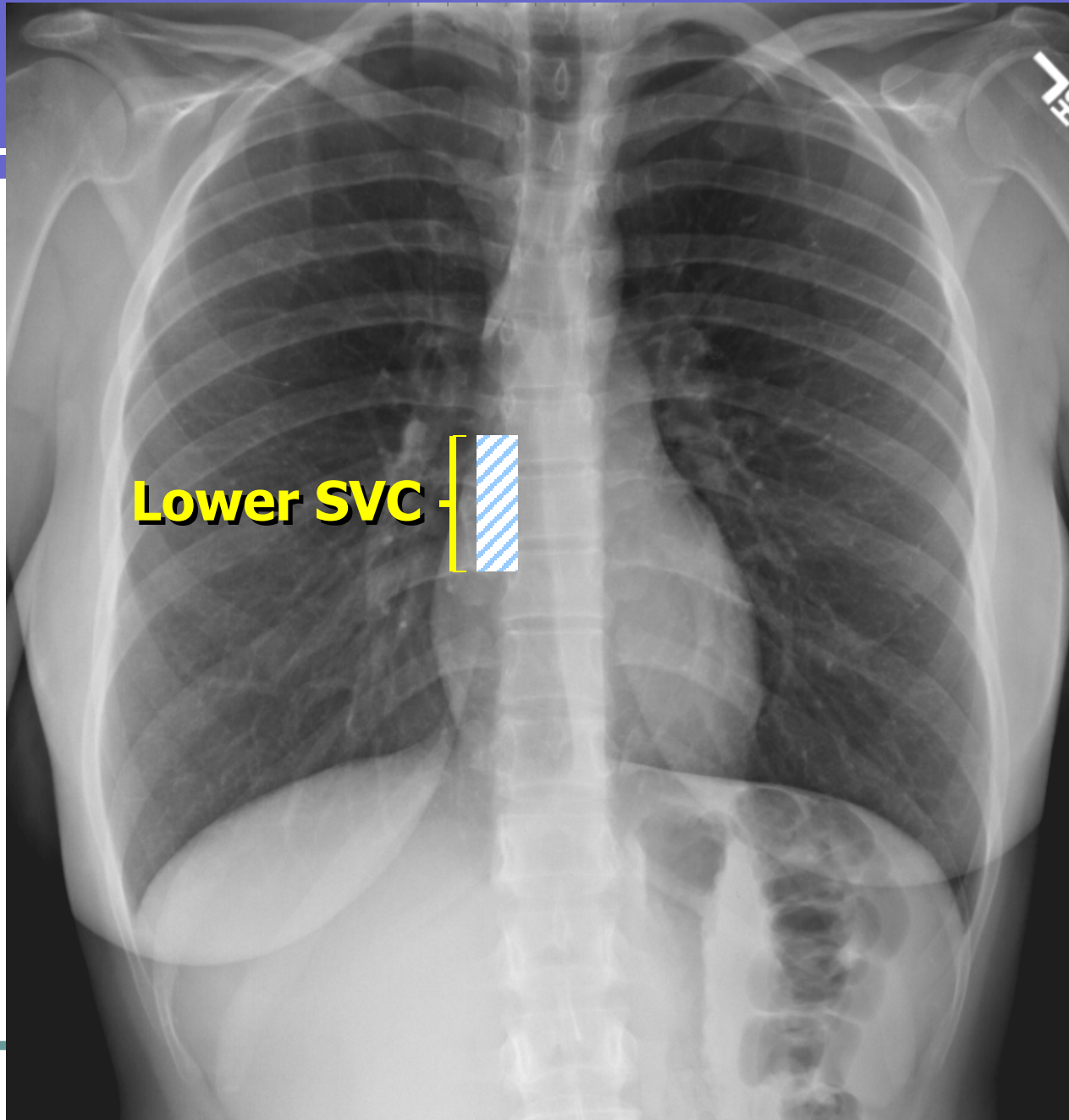
上腔静脉的X线解剖



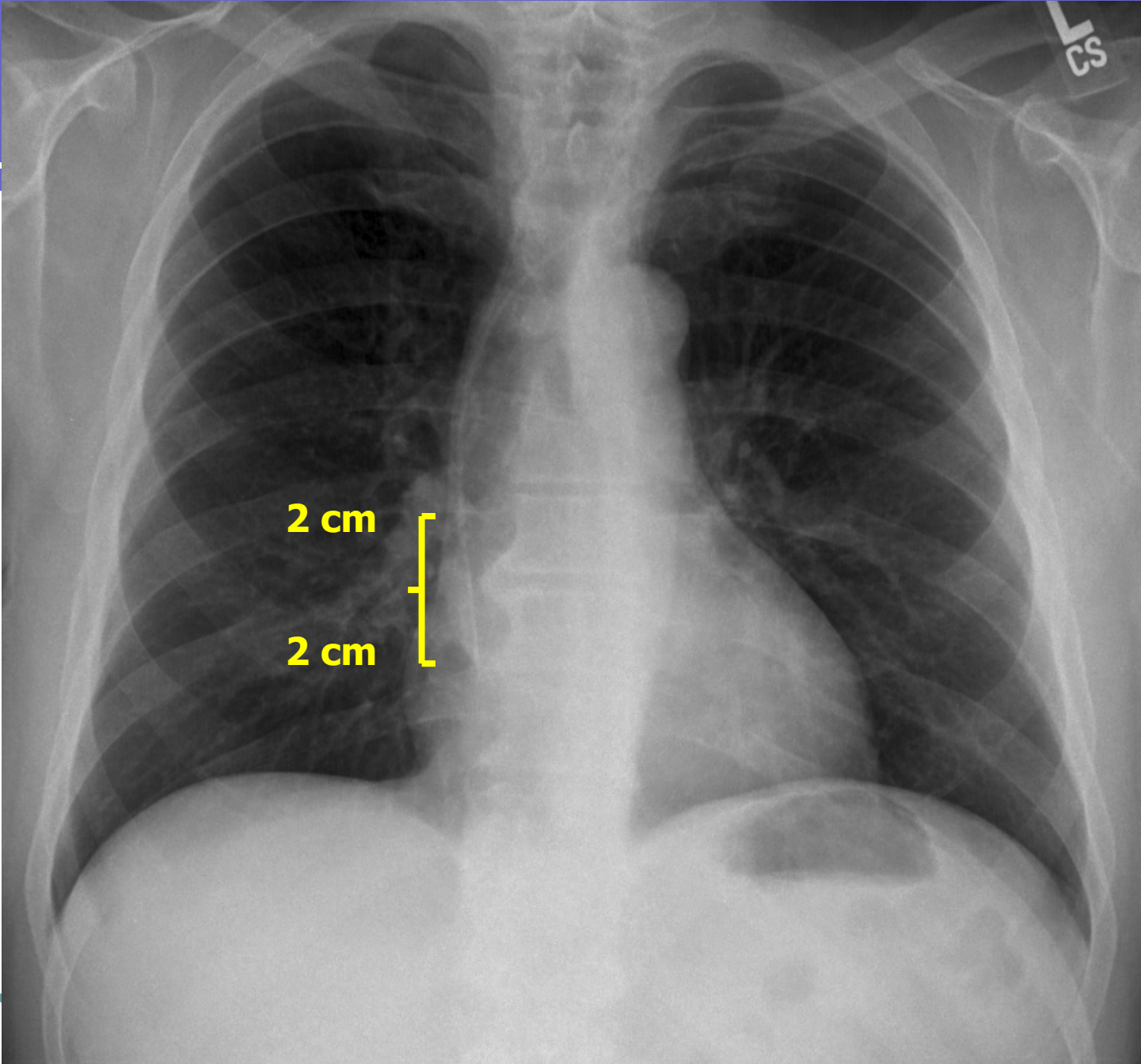
正常的PICC导管在X线胸片上的位置

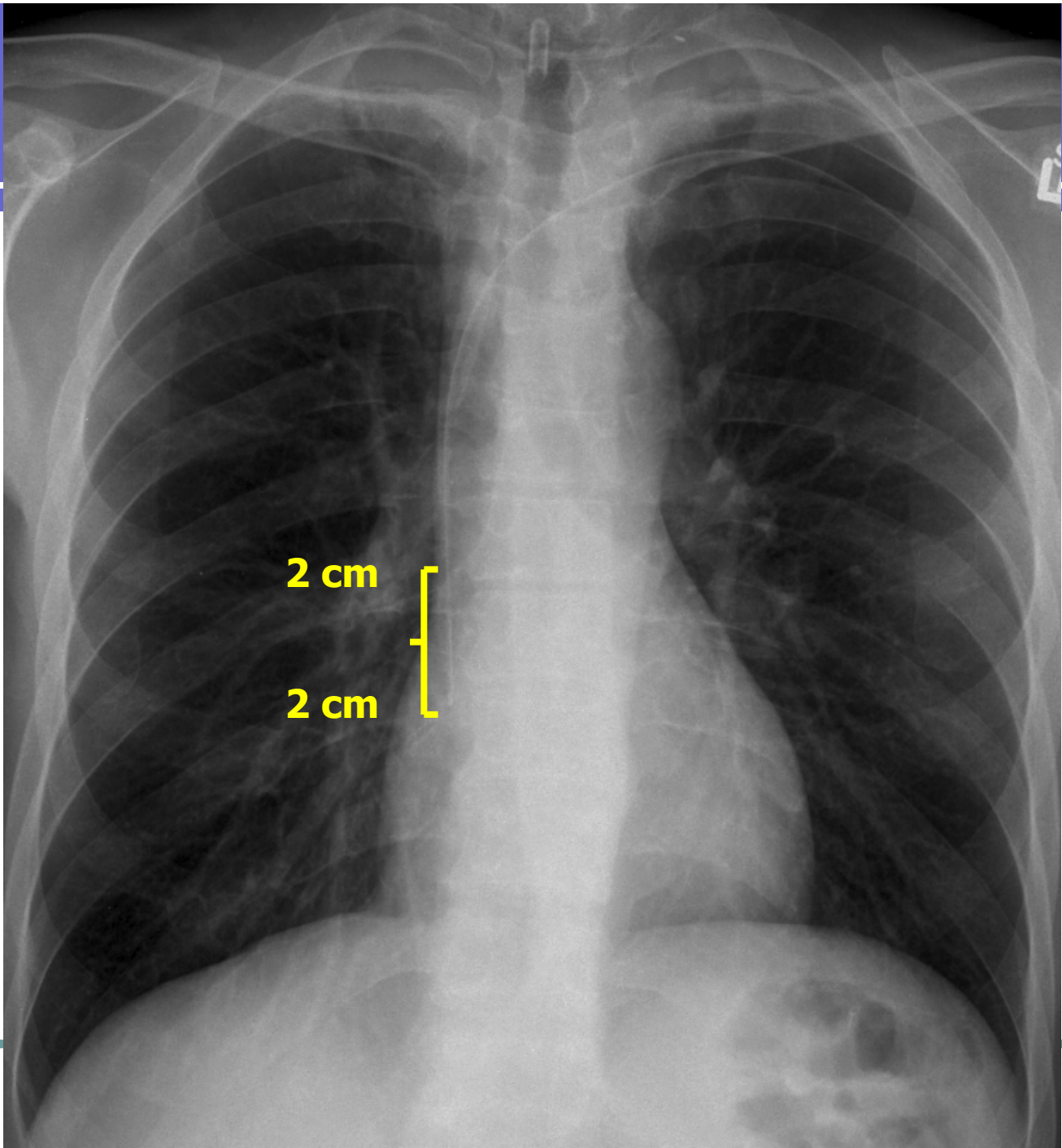
X线胸片：PICC管尖位于第3肋间。





Lower SVC





2 cm

2 cm

以上内容仅为本文档的试下载部分，为可阅读页数的一半内容。如要下载或阅读全文，请访问：<https://d.book118.com/305301303344011221>