

CONTENTS

1. Installing the Software.....	3
1.1 Installing Terminal TS.....	3
1.2 Uninstall Software.....	8
1.3 Setting up Network Configurations.....	9
2. Using the Software.....	17
2.1 Running Terminal TS Console	17
2.2 Explaining Software Settings (local) Function.....	17
2.3 Viewing the Information of Each Station.....	19
2.4 Information & Settings.....	21
3. Terminal TS Console Management.....	23
3.1 Hardware setting(LAN/Local) start menu	23
3.2 Auto Connection Function.....	27
3.3 Auto Logon Function	28
3.4 USB Device Assignment(s).....	29
3.5 View Screen and Management Function.....	30
3.6 Terminal TS Management.....	31
4. FAQ.....	32

1. Installing the Software

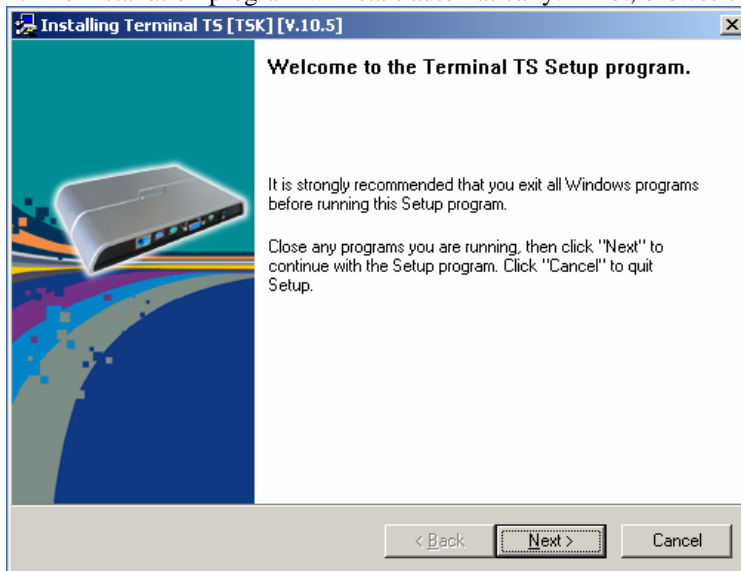
Note

Before you install the software, please check the connection of the Network terminal with the Host PC.

Refer to the following steps.

1.1 Installing Terminal TS

1. Turn on the Host PC and insert the Software Installation CD into the CD drive after your computer boots up.
2. The installation program will start automatically. If not, browse the CD, double click "install.exe".



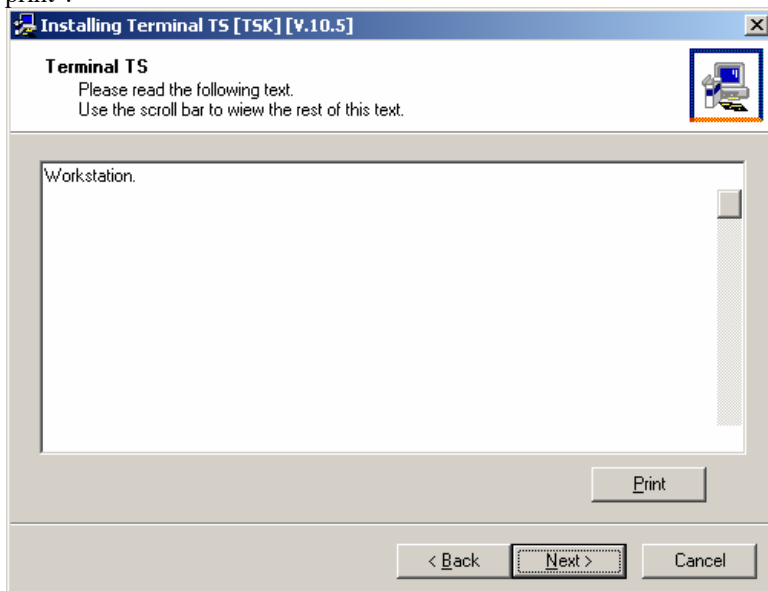
3. Please make sure to DISABLE or UNINSTALL any Anti-Virus or Firewall software that may be running in the background. Security software of this type has been tested and known to interfere with the installation and operation of our product. Click "Next".

4. Once the license agreement window appears, check “I agree” and click “Next”. If you do not agree with the license agreement, click “Cancel” to finish the process. If you want to print in out, please click the “Print”.

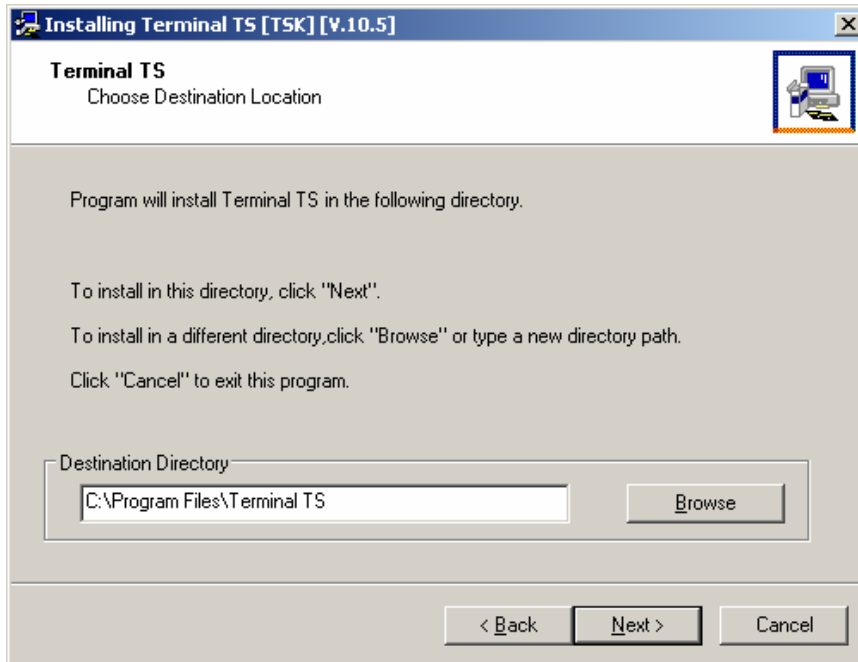


5. When the TERMINAL of use window appears, check “I agree” and click “Next”. If you do not want to agree to the license, click “Cancel” to finish the process. If you want to print in out, please click the “print”.

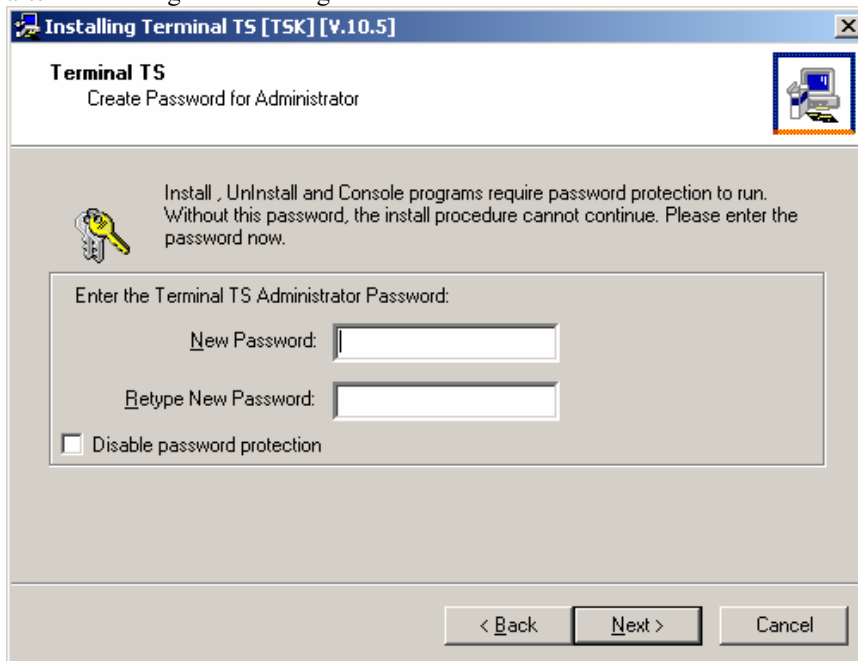
6. Read the contents of the readme file and click “Next”. If you want to print in out, please click the “print”.



7. Select the installation default folder and click “Next”. The “program Files” is the default installation folder.



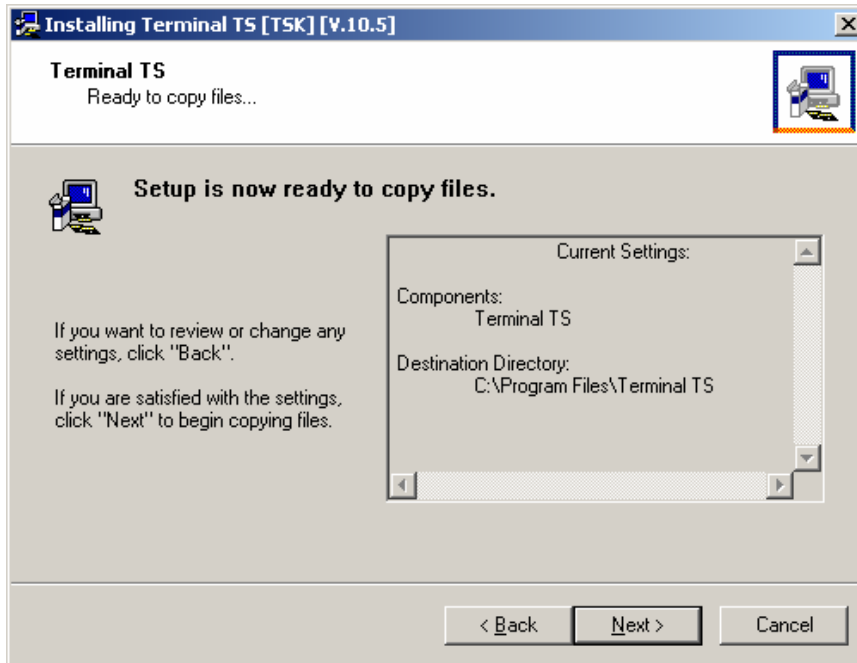
8. If the screen same as the one shown on the right appears, select the item that you want to install after confirming the following reference and click the “Next”.



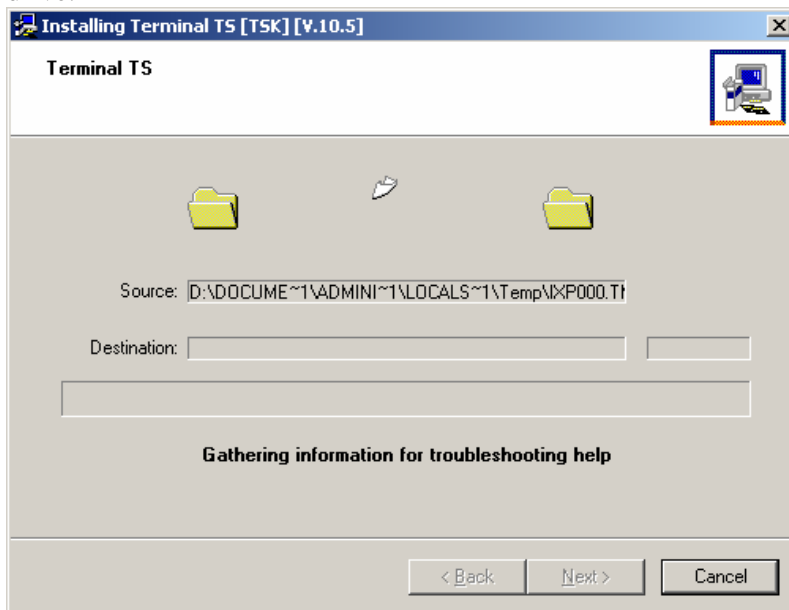
Note

*Administrator Password: If you logon by using this password, you can control the Network Administrator Console.
You should remember the "Administrator Password". If not, you can't execute the program add/delete and management setting.*

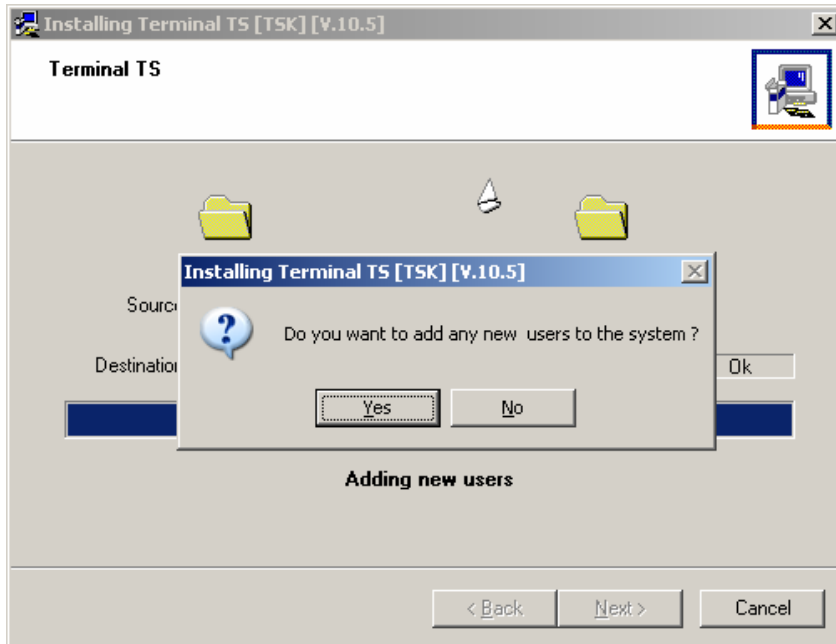
9. Click "Next".



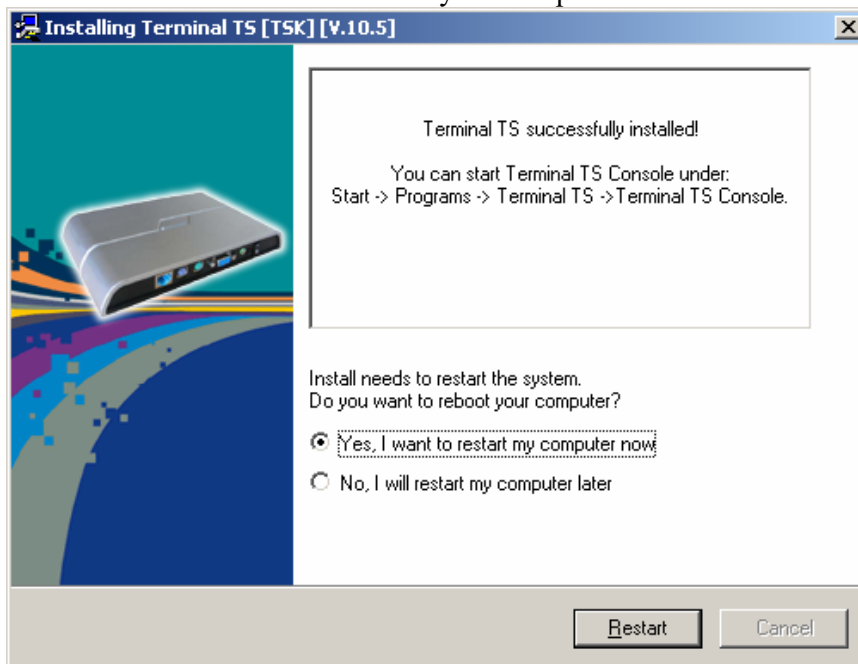
10. After collecting of Help Information, program files will be copied to the hard disk drive.



->



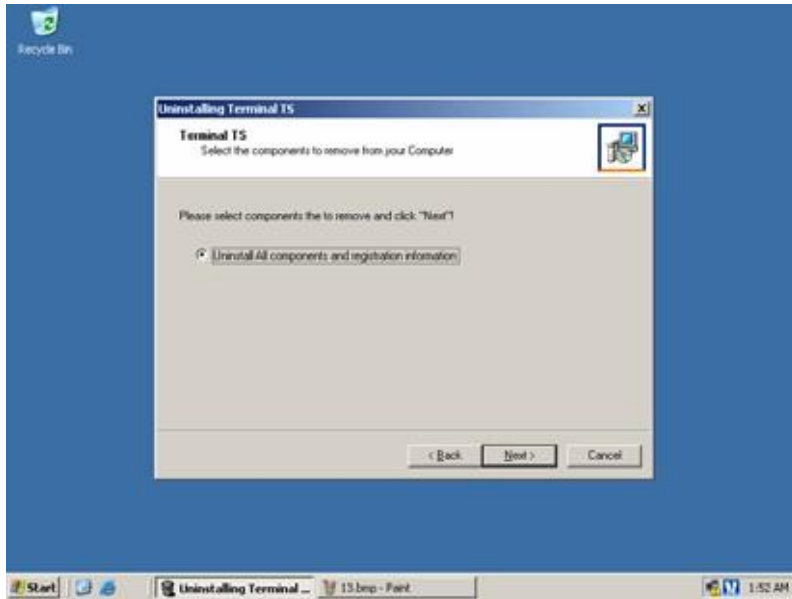
11. When the program installation is completed, the message screen for user adding will be appeared. (Refer to the screen) For more details, please refer to “Create a new account” of operating system. When the user adding is completed you will be asked to restart the system (Refer to the below screen). After checking “Yes, I want to restart my computer now” and click “Restart” to reboot your computer.



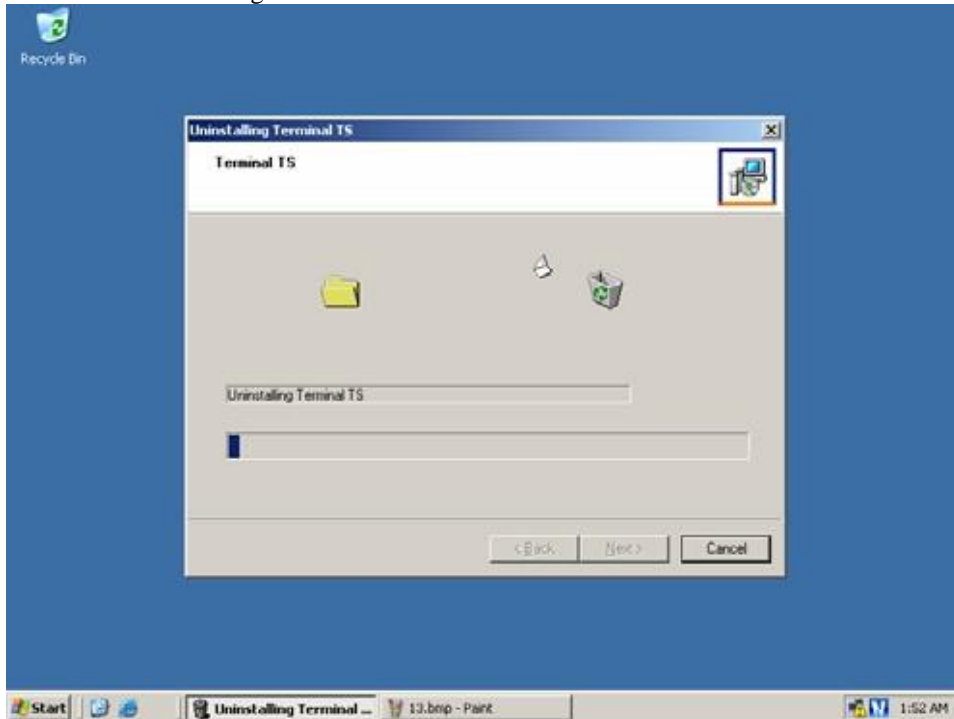
1.2 Uninstall Software

To uninstall the software, follow these steps:

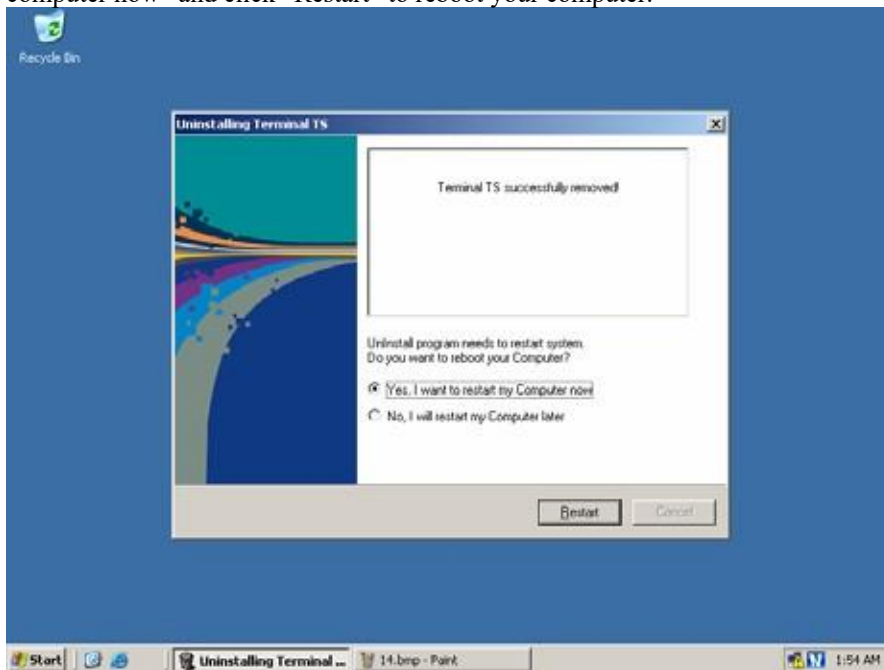
1. Click “Start”, click “All Programs”, click “TERMINAL”, and then click “Uninstall TERMINAL”.
2. When TERMINAL remove wizard window appears, click “Next”. (If you set the Administrator Password, type the password and click “Next”)
3. Click “Next”.



4. TERMINAL is being deleted.



5. After the programs have been removed from your computer, check “Yes, I want to restart my computer now” and click “Restart” to reboot your computer.



1.3 Setting up Network Configurations

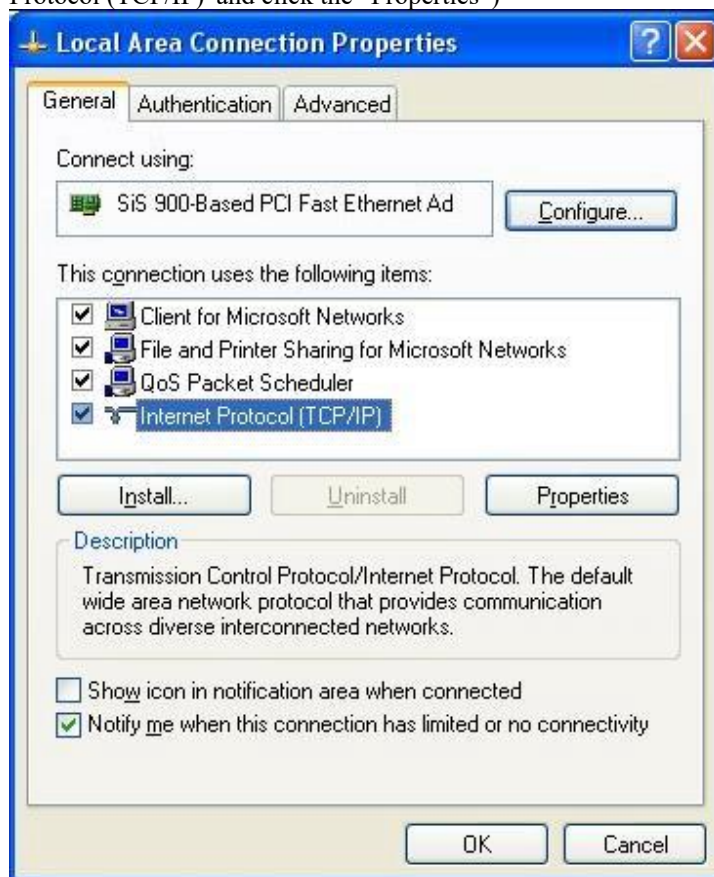
If your computer is using Windows® 2000 or XP or 2000 server or server 2003 and has a network adapter, you have to configure the network to connect with any NETWORK TERMINAL(s). To

configure your computer's network configurations, please refer to the following:

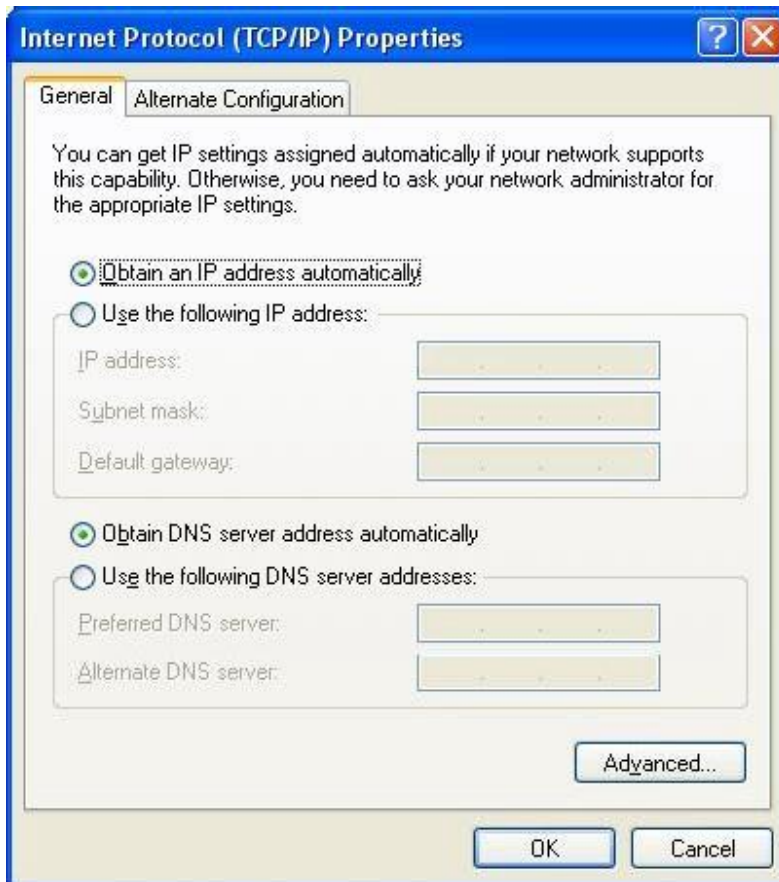
Connecting to the Network by Using a Cable/DSL Router (Support 100 Mbit Switching and DHCP Function)

If you use a Cable/DSL router, you can use dynamic IP addresses. (To use dynamic IP addresses, the router must support DHCP or a dynamic IP address allocation function) If you want to use static IP addresses when using a Cable/DSL router, refer to "Connecting by Using a switch".

1. Click "Start" and click "Control Panel". (In Windows® 2000, click "Start", click "Settings", and then click "Control Panel")
2. Click "Network and Internet Connections", and then click "Network Connections". (In Windows® 2000, double click "Network and Dial-up Connections")
3. Right click on the LAN adapter icon and select "properties". (In Windows® 2000, right click on the LAN adapter icon and select "properties")
4. Click "Internet Protocol (TCP/IP)" and click the "properties". (In Windows® 2000, click "Internet Protocol (TCP/IP)" and click the "Properties")



5. Check “Obtain an IP address automatically” and “Obtain DNS server address automatically,” and then click “OK”.



6 . Turn on the NETWORK TERMINAL for configuration settings. Click the “Setup”.



7. Viewing the monitor connected to the NETWORK TERMINAL, the Setup window will appear. In the “Network” tab, check “Get Dynamic IP address”.

以上内容仅为本文档的试下载部分，为可阅读页数的一半内容。如要下载或阅读全文，请访问：<https://d.book118.com/308140005064006027>