

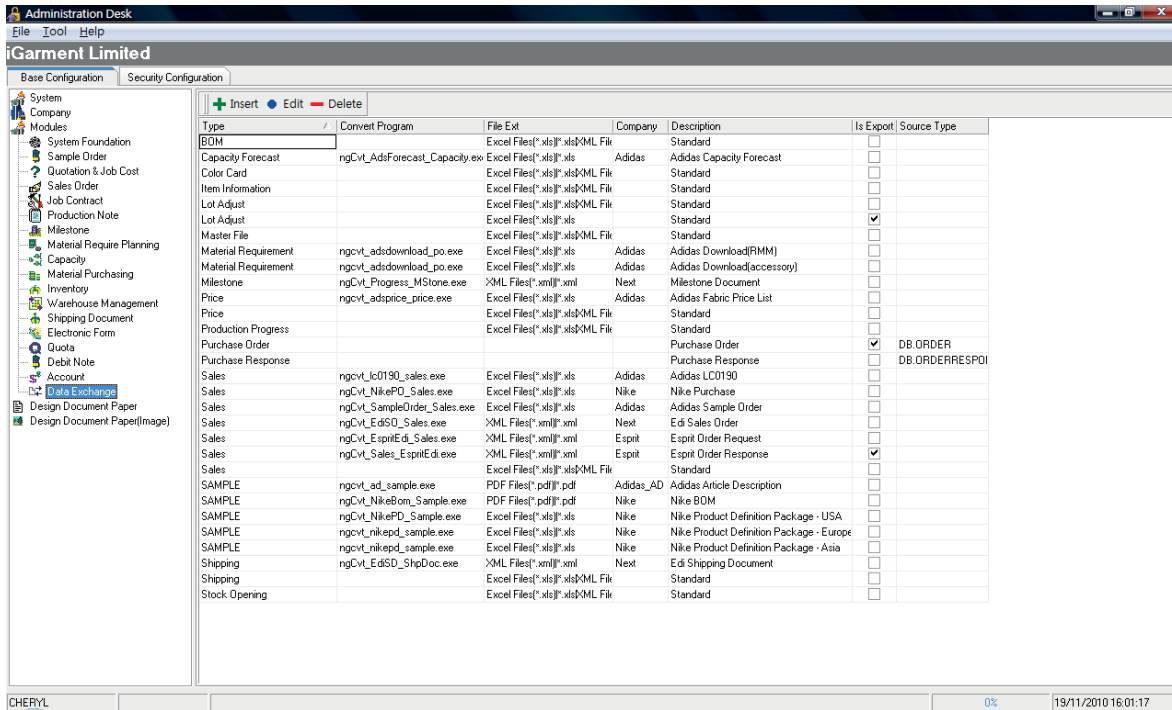
# Table of Contents

Section	Page
<b>1. Introduction.....</b>	<b>3</b>
<b>2. Create Import/Export Configuration.....</b>	<b>5</b>
<b>3. Import Document.....</b>	<b>9</b>
3.1. Import from excel .....	11
3.2. Import from PDF.....	17
<b>4. Call Help Desk Support.....</b>	<b>20</b>

# 1. Introduction

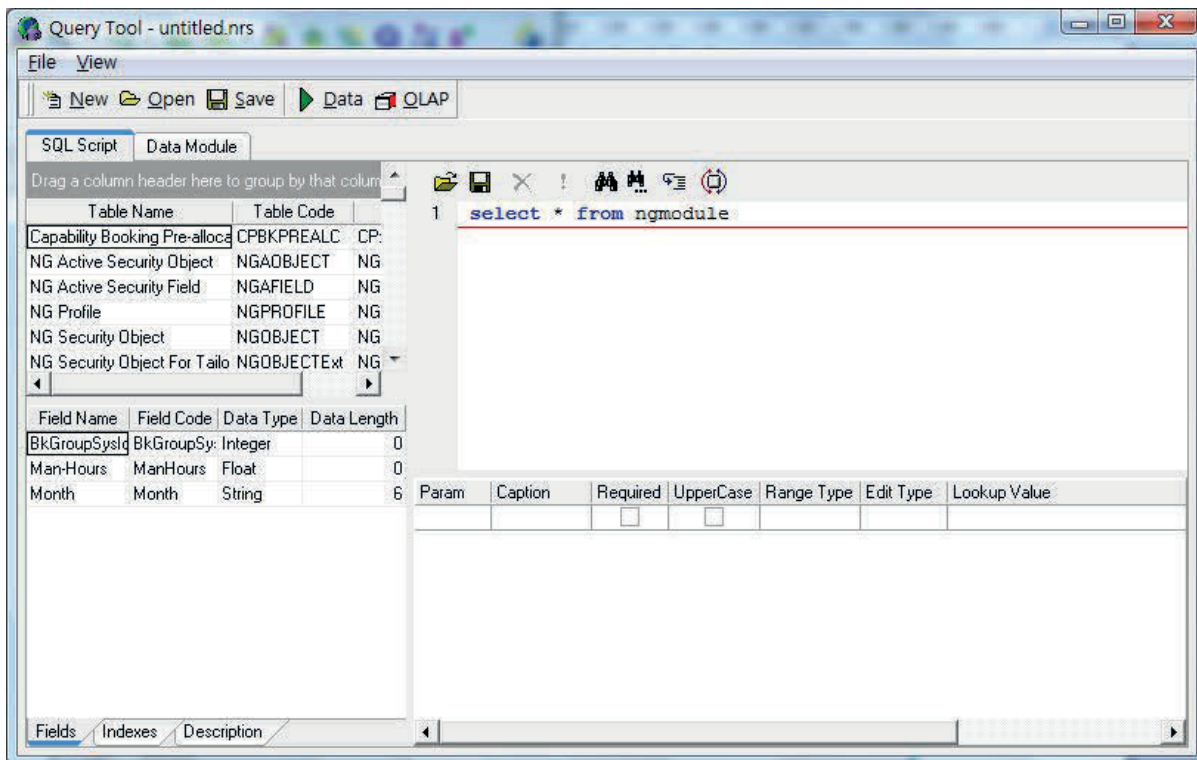
Partner Enabler module is a platform to help the company to define import template from Excel, PDF and

XML. It allows the user to define the specific import configuration of the source document, in which mapping of the existing field with the system field can also be defined.

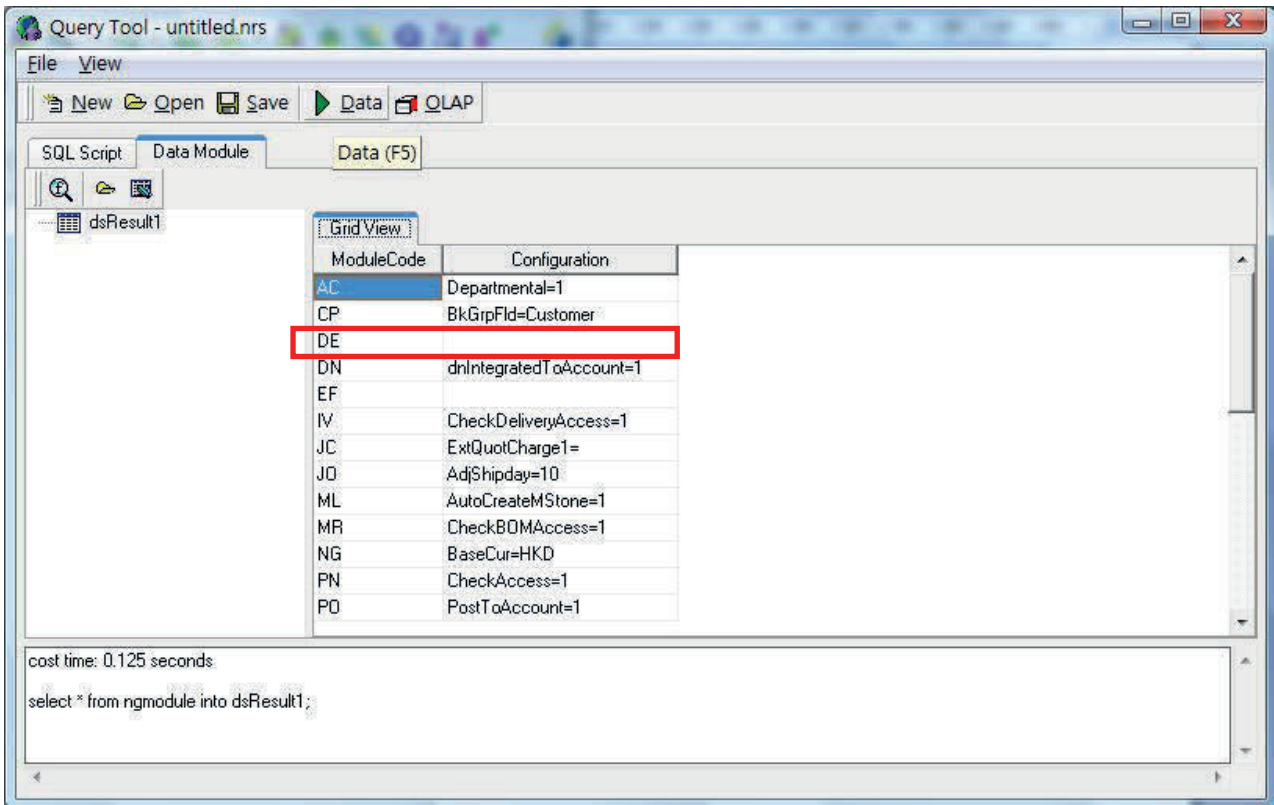


## \* Directory of the Data Exchange

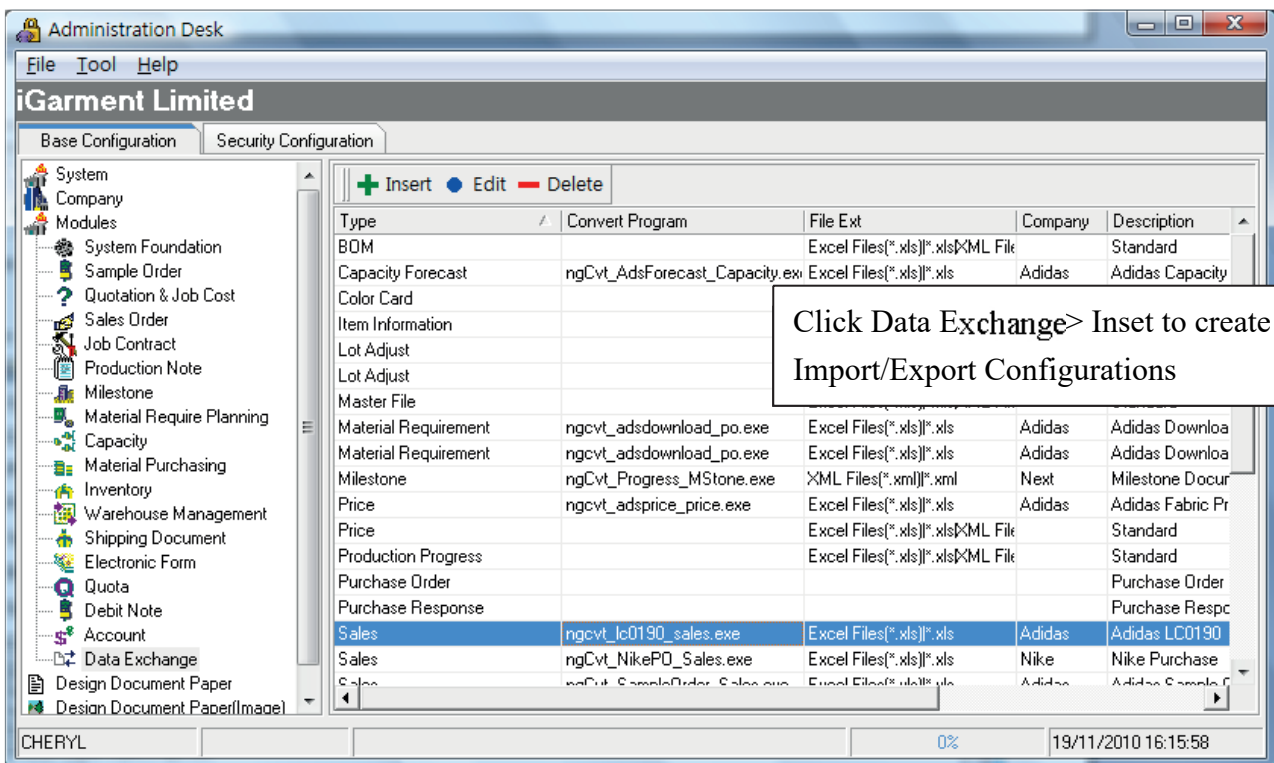
With the activation of the Partner Enabler module, the user is able to view the module in the Query Tool.



User can see the DE module code in which indicated the Partner Enabler module.



## 2. Create Import/Export Configuration



Select the module

**Import/Export Configuration**

Type: Sales

Company: Adidas

Program: ngcvt\_lc0190\_sales.exe

File Ext: Excel Files(\*.xls)\*.xls

Is Export?

Description: Adidas LC0190

Source Type:

Configuration

OK Cancel

Type in the company that use the configuration

Select the relevant exe file

Select the import file format

Is the file need to export?

Description of the Import/ Export Configuration

**Configuration**

```
[Config]
ImportType=LC0190
ImportDescription=Adidas LC0190
ExportType=Sales
DocID=Style/Style;ShipDate

OrderNoPrefix=SD[IssDate[YY]][IssDate[MM]]/[0000]
SampleOrderMatchRule=Customer=[Customer] and Style=[Style] and SmpType='PP'
[Group]
Document=Style/Style
Style=Style
Style/Shipment=LotRef

[Column]
article=Color
status_d=issdate
factory_name=CustPoRef
status=Season
ipmt_no=Style/Style
ranges=Style/Description
article_name=Style/Fulldesc
class=style/programcode
order_no=style/Shipment/LotRef
FTY COMMENT=Style/Shipment/ShipDate
ctry_to=Style/Shipment/ShipDest
customer=style/Shipment/label
factory=Style/ProdLoc

[Default]
Customer=ADS
Style/Unit=PCS
useSysSizeSequence=?SizeSequence(True)
ConfirmBom=?Confirm Bom(False)

[format]
FTY COMMENT=YYYY.MM.DD
status_d=YYYY.MM.DD

[Code]
```

OK Cancel

```
[Code]
ctry_to=Country.Code
ctry_name=Country.Name
factory=Manufacturer.Code
```

OK Cancel

Enter the Source Type

以上内容仅为本文档的试下载部分，为可阅读页数的一半内容。如要下载或阅读全文，请访问：<https://d.book118.com/335342220131011310>