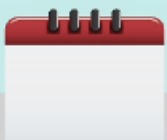
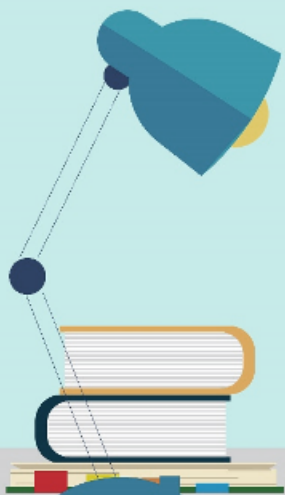




Unit 4

高频词汇学习 (三)



设计说明

本课件依据新教材和新课标的要求，将中英文中思维差异大、高考出现频率高、词义较多、用法灵活的词汇进行了汇总和精讲。

- **特点：创新趣味性导入、追本溯源记单词、多重维度复现单词、遗忘曲线精准练单词、深度学习记忆单词**
- **模块：每个词的呈现同中有异，包含导入、详情和练习三个主要模块。具体分为：情境导入、词根溯源、语义网络图、精准释义、常见搭配、词块例句、高考链接、学后练习等方面**

Unit4 高频词汇一览



approach *n.& v.* !



position *n.* !

approach n. & v.

approach

导入

详情

练习

词源

语义网络图

精准释义

词块例句

词汇拓展

高考链接

approach [ə'prəʊtʃ] n.&v.

导入

approach



What should we do?



如果把这两块拼图拼在一起，那么你首先要做的就是让他们相互“靠近”，此时可以用 **approach** 来表达。

用 **approach** 表述人与人之间的“靠近”时，应该怎样理解呢？

当两个人谈论“针对某事应该怎样做”时，**approach** 的精确释义是什么？

请看
approach

approach (n.)

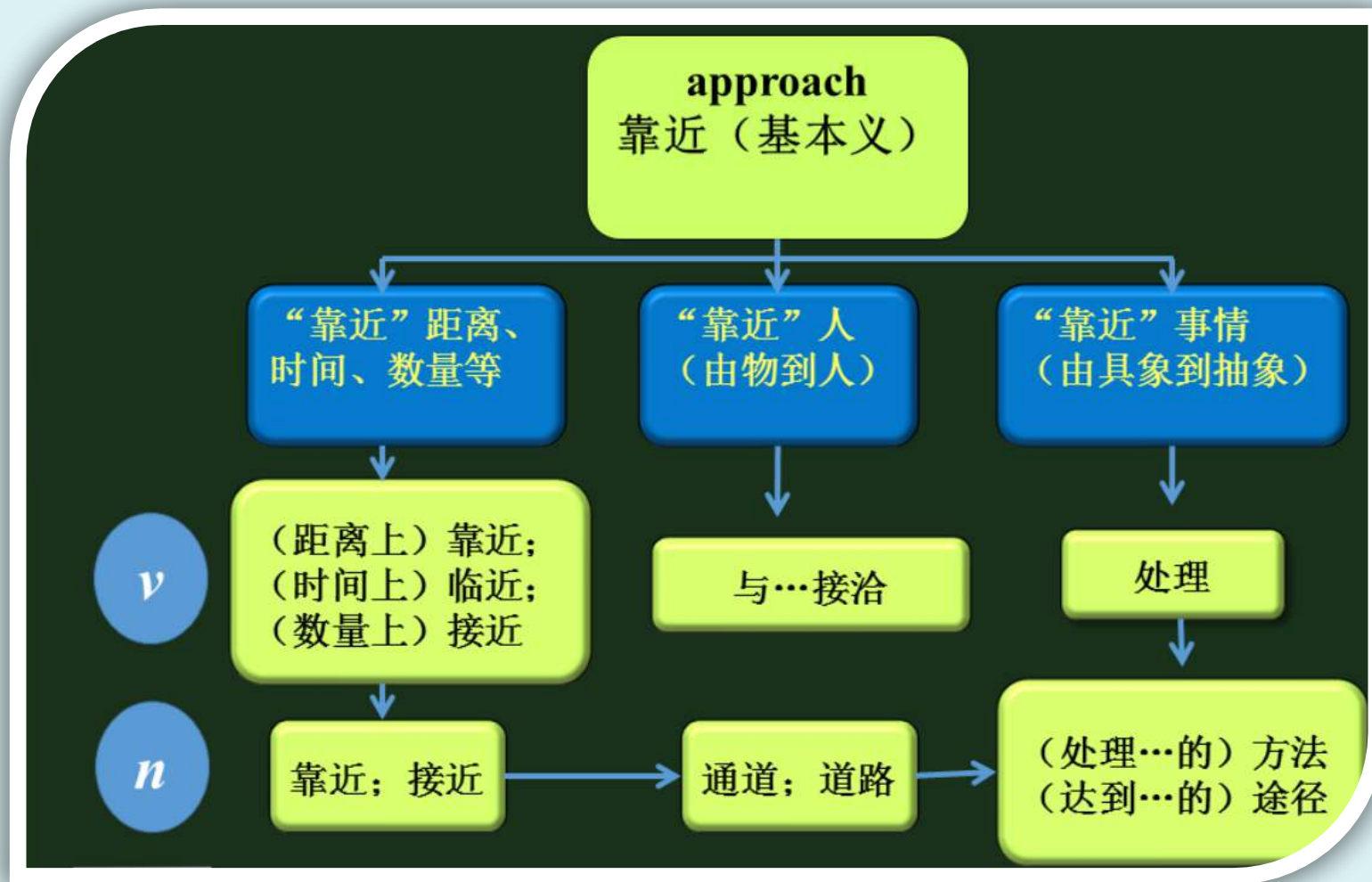
mid-15c., "act of drawing near, arrival," from **approach** (v.). Meaning "way or means by which something is approached" is from 1630s. Figurative sense of "means of handling a problem, etc." is attested by 1905. Sense of "final stage of an aircraft flight before landing" is by 1930.

approach (v.)

c. 1300, "to go or come near" in place; late 14c. "come near in time," also "come near in quality or character, resemble, become similar," from Anglo-French *approcher*, Old French *aprouchier* "come closer" (12c., Modern French *approcher*), from Late Latin *appropriare*, *adpropriare* "go nearer to," from Latin *ad* "to" (see **ad-**) + Late Latin *propiare* "come nearer," comparative of Latin *prope* "near" (see **propinquity**). Replaced Old English *neahlæcan*.



语义网络图



精准释义

- ① n. 靠近;接近 [u]
- ② n. 通道;道 [c]
- ③ n. (处理..的)方法; (达到..的)途径[c]
- ④ vt. & vi. (距离.上)靠近(near); (时间上)临近; (数量上)接近
- ⑤ vt. 与.....接洽
- ⑥ vt.处理



词块例句

the approach to sth./doing sth. 做某事的方法

- the **approach** of autumn 秋天的来临
- The students stopped talking at the teacher's **approach**. 老师一走近，学生们就不说话了。
- All **approaches** to the town were blocked. 所有去城里的路都被堵住了。
- She decided to adopt / take a different **approach** to the problem. 她决定采取不同的途径解决这个问题。



词块例句

- **Approaching** the vehicle, they saw that a woman was trying to get out of the broken window. 走近那辆车时，他们看见一位女士正努力从破损的车窗往外爬。(2016全国)
- The students **approach** their teacher for advice. 学生们找到老师征求意见。
- What's the best way of **approaching** this problem / matter / task?
处理这个问题/事情/任务的最佳方法是什么呢?



词汇拓展

- ◆ 根据基本义“靠近”理解动词各层释义，借助英语释义和例句理解动词释义②③和名词释义③；
- ◆ 借助动词释义来理解名词的释义；掌握名词的用法、搭配 **approach to (doing) sth**；
- ◆ **approach**是写作高级词，注意在写作时用**approach**代替平常用的词。



词汇拓展

◆ 动词 **approach** 由 “to (ad-)” + “come near” 构成，其基本义是 “靠近”。

◆ 由名词 **approach** 的词源可以看出，其基本义由动词而来，随着语言的发展，**approach** 衍生出其他释义：(基本义) “靠近”

(具象) “达到某地的通道”

(由具象到抽象) “(处理…的) 方法，(达到…的) 途径”。



以上内容仅为本文档的试下载部分，为可阅读页数的一半内容。如要下载或阅读全文，请访问：
<https://d.book118.com/417024044143010001>