

TFT LCD MODULE
1.77" 262K 128RGB*160 DOTS

MODULE NO.: GYTF018M1B0M

REVISION: A00

Customer Approval:

--

	SIGNATURE
PREPARED BY	ANDY YI
CHECKED BY	
APPROVED BY	

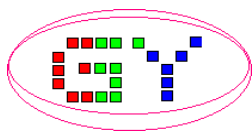


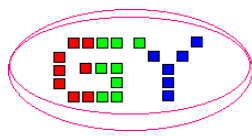
Table of Contents

NO.	Item	Page
	Cover Sheet	1
	Table of Contents	2
	Record of Revision	3
1	Features	4
2	General Specifications	4
3	Input / Output Terminals	5
4	Absolute Maximum Ratings	6
5	Electrical Characteristics	6
6	Timing Chart	8
7	Optical Characteristics	19
8	Handling Cautions	23
9	Mechanical Drawing	24
10	Packing Drawing	25



Record of Revision

Rev	Issued Date	Description
0.0	Mar. 20, 2006	New Create for GYTF018M1B0M



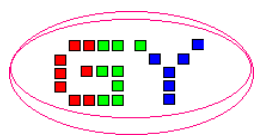
1. FEATURES

The 1.77”(4.487cm) LCD module is an active matrix color TFT LCD module. LTPS (Low Temperature Poly Silicon) TFT technology is used. Vertical drivers are built on the panel.

2. GENERAL SPECIFICATIONS

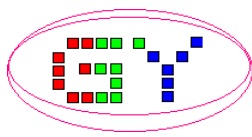
Item	Description	Unit
Display Size (Diagonal)	1.77 (4.487)	Inch (cm)
Display Type	Transmissive	
Active Area (HxV)	28.032 x 35.04	mm
Number of Dots (HxV)	128 x RGB x 160	dot
Dot Pitch (HxV)	0.073 x 0.219	mm
Color Arrangement	RGB Stripe	
Color Numbers	65K Driver IC support 262K	
Outline Dimension (HxVxT) *	34.0 x 45.78 x 2.90	mm
Weight	TBD	g

* Exclude protrusions.



3. INPUT/OUTPUT TERMINALS

Interface: CPU mode 8080(Parallel)		
NO.	Name	Description
1	BL_K	LED1 Cathode
2	BL_A	LED Supply Voltage (LED1 Anode)
3	GND	System ground
4	VDD	Supply Voltage (2.5V~3.3V)
5	NC	Not connect
6	NC	Not connect
7	/CS	Chip Select(Low: Chip select; High: Chip de-select)
8	/RESET	Reset
9	RS	Command/DATA select (Low: command; High: data)
10	/WR	Write enable(Low: Write; High: Read)
11	/RD	Read enable
12	D7	Data 7
13	D6	Data 6
14	D5	Data 5
15	D4	Data 4
16	D3	Data 3
17	D2	Data 2
18	D1	Data 1
19	D0	Data 0
20	GND	System ground



4. ABSOLUTE MAXIMUM RATINGS

VSS=0V

Item	Symbol	Min	MAX	Unit	Remark
Supply Voltage	VDD	--	+4.6	V	
I/O Supply Voltage	VDDIO	-0.3	VDD+0.3	V	
Input voltage	VI	-0.3	VDD+0.3	V	Note 4-1
Back Light Forward Current	IF	-	+25	mA	
Operating temperature	Topr	-20	+70	°C	
Storage temperature	Tstg	-40	+80	°C	

Note 4-1 :VI : D0~D7, /CS, RS, /WR, /RD, /RESET.

5. ELECTRICAL CHARACTERISTICS

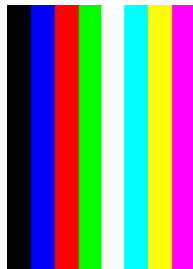
5.1 Driving TFT LCD Panel

VSS=0V, Ta=25°C

Item	Symbol	MIN	TYP	MAX	Unit	Remark
Supply Voltage	VDD	2.5	2.8	3.3	V	
Logic Input High Level	V _{IH}	0.8VDD	--	VDD	V	
Logic Input Low Level	V _{IL}	GND	--	0.2 VDD	V	
Power consumption in Normal Still mode (Line inversion , 70 Hz)	P _{Normal}	--	5.1	5.9	mW	Note 5-1
VDD Current consumption in Normal Still mode	I _{VDD- Normal}	--	1.8	2.1	mA	
Power consumption in 8 Color Partial Mode (Frame inversion , 50 Hz , 32 Line)	P _{Partial}	--	1.7	2.0	mW	
VDD Current consumption in 8 Color Partial Mode	I _{VDD- Partial}	--	0.6	0.7	mA	
Power consumption in Sleep Mode	P _{Sleep}	--	69	200	μW	
VCI Current consumption in Sleep Mode	I _{VDD- Sleep}	--	25	72	μA	

Note: 5-1: Power consumption test condition (VSS=0V, Ta=25°C)

- a. Input voltage (VDD=2.8 V)
- b. Test pattern: Color Bar



以上内容仅为本文档的试下载部分，为可阅读页数的一半内容。如要下载或阅读全文，请访问：<https://d.book118.com/488014107102006026>