

## Contents

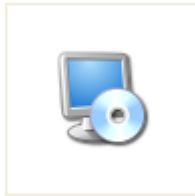
1. System requirements.....	2
2. Software installation .....	2
3. Quick start .....	2
4. Software menu .....	4
4.1 File menu.....	4
4.2 System menu.....	5
4.3 Tool menu.....	5
4.4 Setting menu.....	5
4.5 Help menu.....	5
4.6 Toolbar .....	6
5. Software functions.....	6
5.1 Display Setting .....	6
5.2 Coordinate Setting.....	6
5.3 Software Setting .....	7
5.4 Curve Review.....	7
5.5 Single Testing.....	9
5.6 Auto Testing (partial models without this function).....	10
5.7 Cycling Testing (partial models without this function) .....	11
5.8 DC internal resistance testing (partial models without this function) .....	13
5.9 Parameter Calibration.....	13
5.10 Quick Charger Test (Only EBD-USB supports this functionality) .....	14
5.11 Firmware upgrade.....	15
6. Compatible models.....	15

## 1. System requirements

- ✧ Processor main frequency>2G Hz
- ✧ RAM>1G, more RAM is suggested.
- ✧ Free disc space>1G
- ✧ Either Windows XP/Win7/Win8/Win10
- ✧ Computer monitor: 1024×768 or higher

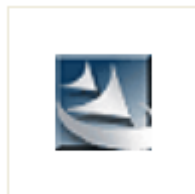
## 2. Software installation

First install the tester software. Please double click this one to start installation.



eb\_setup\_v1.8.5\_e...

Next install the USB port driver. Please double click this one to start installation.



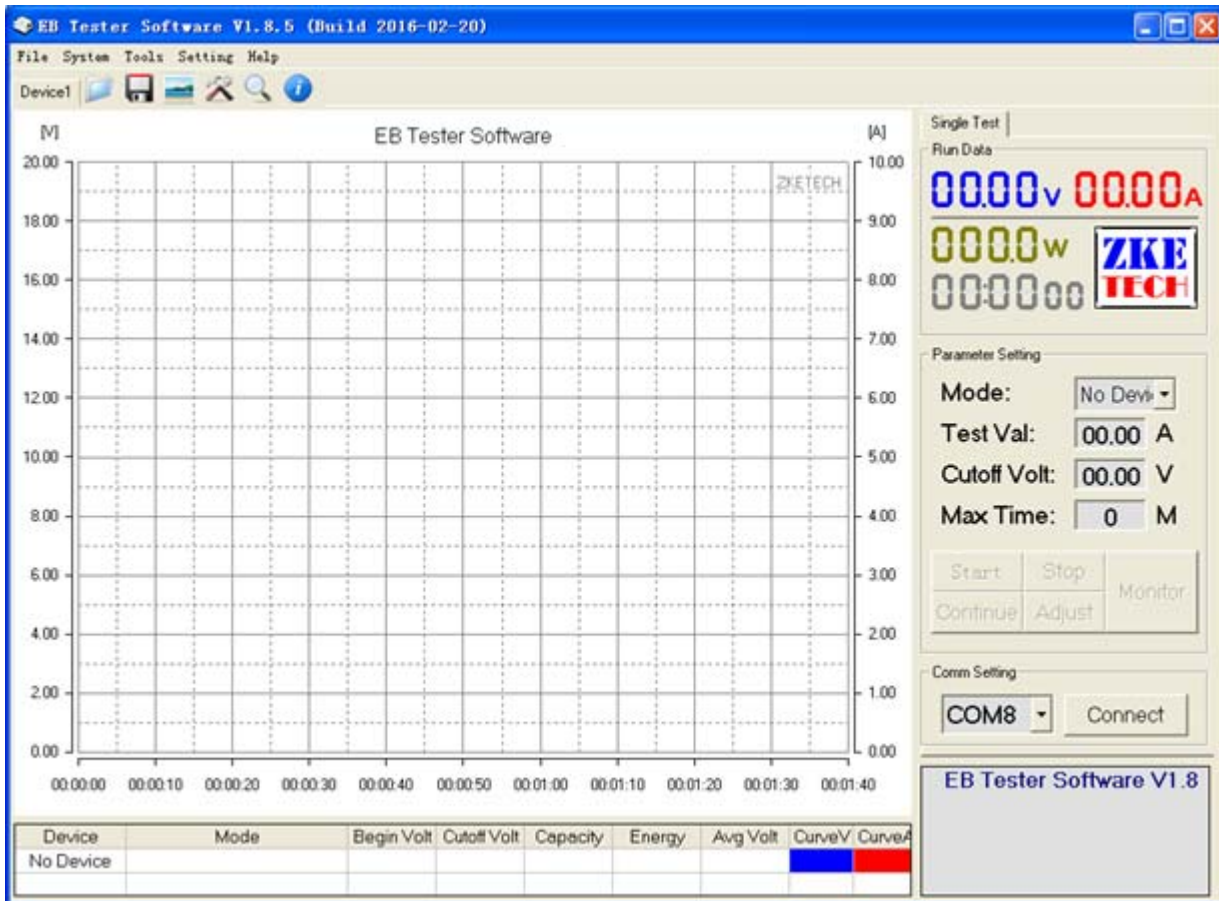
PL2303\_Prolific\_D...

After the installation is completed, plug in USB cable and you can find corresponding port number in Device Manager in your computer. (Click on the Start button and then on Control Panel.

EB software can't identify any port number larger than COM10, please change the port number to smaller than 10 in Ports if it's larger than 10 in your computer system:

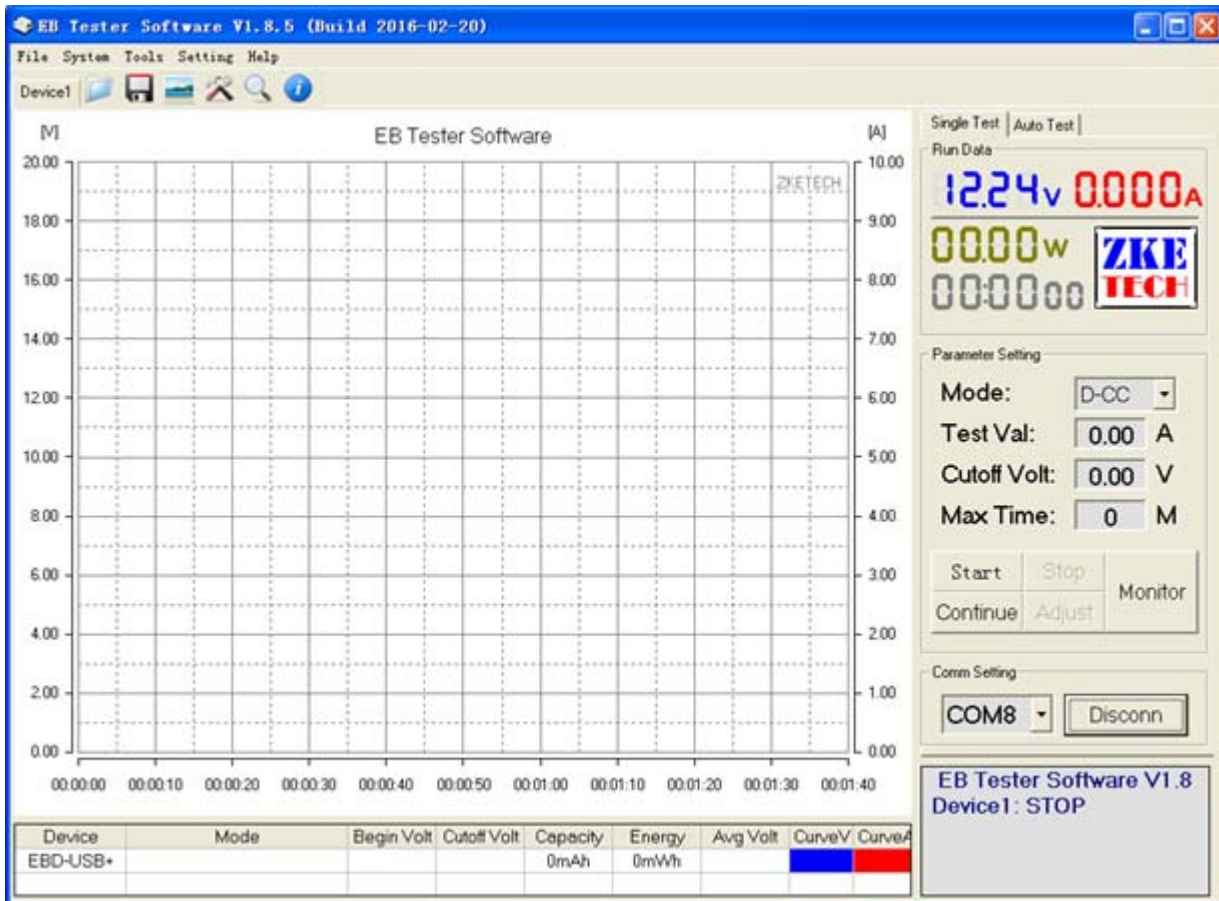
## 3. Quick start

- (1) Connect the tester to your computer through a USB to TTL serial converter cable.
- (2) Start EB software and select the corresponding port of TTL cable in Device Manager.



(3) Click on “Connect” button to build connection between the computer and the tester (the tester should stop operation and stay at test interface).

(4) When the connection completes successfully, you will find the same operational data in the software as that’s shown on the tester. Device model changes from “No Device” to the tester model.

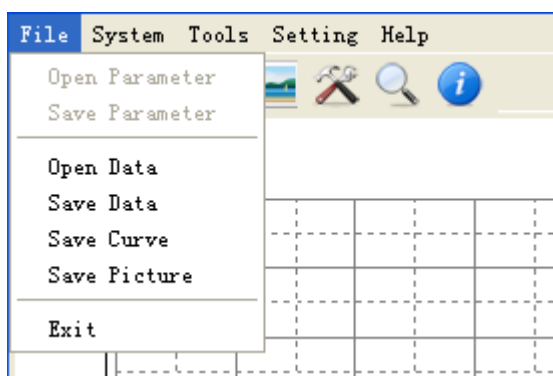


(5) Set up parameters in Parameter Setting and click on “Start” button to start testing.

(6) Click on “Curve V” and “Curve A” to change the curve colors.

## 4. Software menu

### 4.1 File menu



- ✧ Open Parameter — Open parameters saved for the last single test.
- ✧ Save Parameter — Save parameters for the current single test.
- ✧ Open Data — Open the last saved curve data.
- ✧ Save Data — Save the current curve data.
- ✧ Save Curve — Save current curve image.

以上内容仅为本文档的试下载部分，为可阅读页数的一半内容。如要下载或阅读全文，请访问：<https://d.book118.com/59533112302011220>