

## GENERAL

## Operatioanal Hours

ATS Hours: H24

AD OPS Hours: 0400-2200†, other times O/R.

AD ADMIN Hours: MON-THU 0545-1430, FRI 0545-1315

## Airport Information

RFF: CAT 7

PCN: RWY 08/26: 64/F/B/X/T

## Operation

## Low Visibility Procedure

In force when RVR below 550m and/or cloud ceiling is equal or below 200ft.

When RVR below 350m follow-me mandatory.

After having vacated RWY report "RWY vacated".

Intersection TKOF prohibited when LVP in force.

## RWY Restriction

180°-turns on RWY prohibited outside designated areas.

## Taxi/Parking

Marshaller and/or follow-me O/R.

Taxiing to stands 10-15 with follow-me only.

## Warnings

During winter CONDs certain taxi guide lines not visible due to snow.

Birds in vicinity of AD.

## ARRIVAL

## Communication

## COM Failure

RNAV RWY 08:

Maintain last cleared FL to IAF, then descend in HLDG pattern to 4000ft MSL for IAP.

RNAV RWY 26:

Maintain last cleared FL to IAF, then descend in HLDG pattern to 5000ft MSL for IAP.

## DEPARTURE

## Take-off Minima

RWY		08/26	
All ACFT	ft - m/km	0 - 150R	-
		0 - 200R/200V	LVP, HIRL, RCLL
		0 - 300R/300V	LVP, HIRL or RCLM wo HIRL, HJ only

## Communication

## COM Failure

## RNAV

Continue SID routes climbing to last assigned and acknowledged FL but not below FL080 within TMA continue climb to FPL FL. Leave last assigned FL at earliest 7min after it is reached.

## Departure Procedure

Start-up/Push-back: REQ push-back/taxi CLR from TWR.

## Omnidirectional Departure Procedure

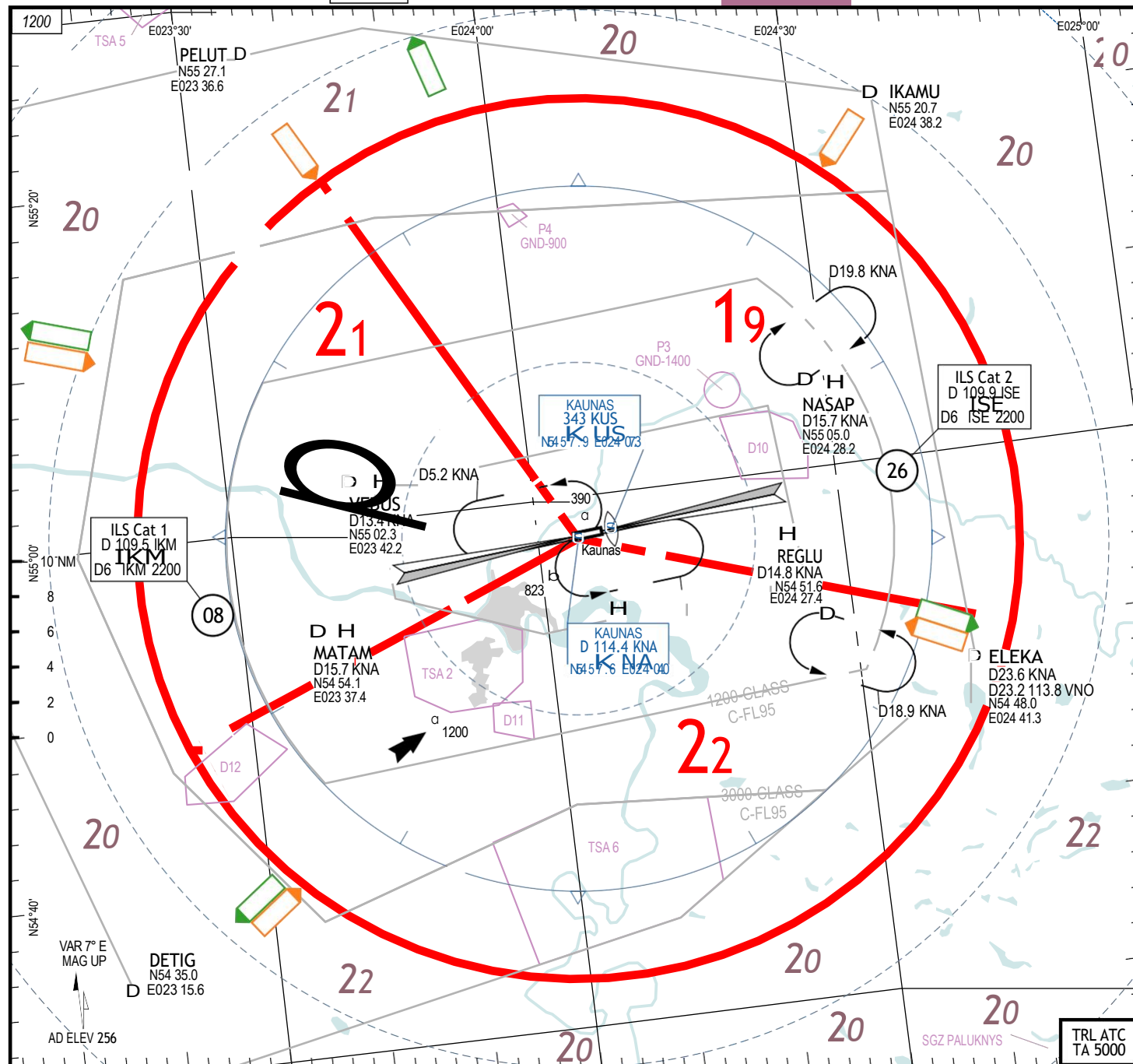
On PIC request only.

## RWY 08/26:

Climb straight ahead with PDG 6.6% (400ft/NM) to turning ALT 700ft MSL. Continue climb to appropriate MSA.

## De-icing

AVBL.



ATIS	129.050
Info	124.600
APP	124.200
	118.500 HO
TWR	124.200
	118.500 HO

Landing RWY system:

08 ..... 300 | 2950 x 45 ..... 3.0° ..... 60 HL ..... 30 HL

HL-P1 ..... 236 / 9hPa ..... TDZ +0.2% ..... +0.2%

60 HL ..... 30 HL ..... 45 x 2955 ..... 29 ..... 3.0° ..... 256 / 9hPa ..... HL-P2F

KUN-EYKA

3-20

AGC

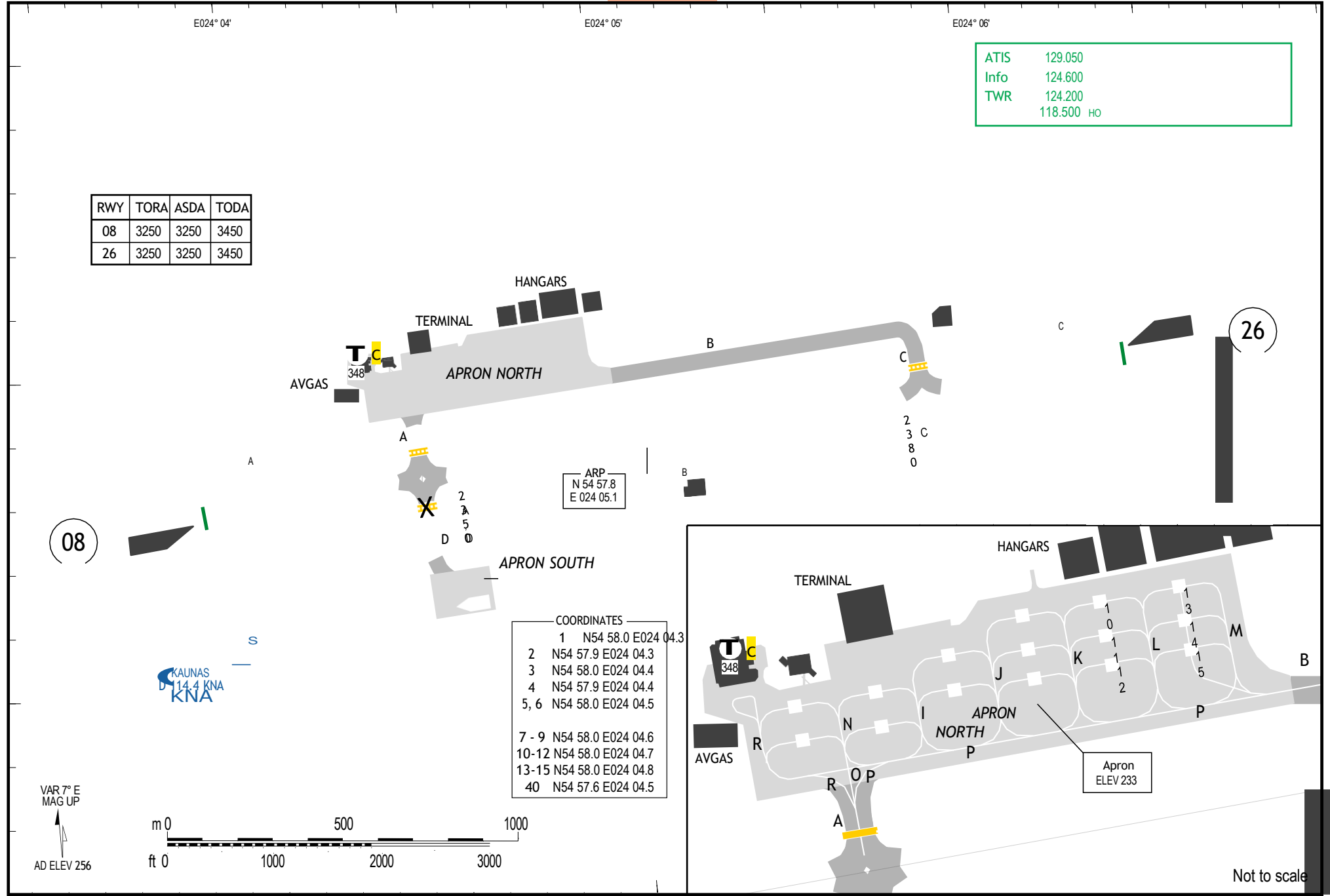
AGC

AGC

AGC

RWY	TORA	ASDA	TODA
08	3250	3250	3450
26	3250	3250	3450

ATIS	129.050
Info	124.600
TWR	124.200
	118.500 HO



ARP  
N 54 57.8  
E 024 05.1

COORDINATES

1	N54 58.0	E024 04.3
2	N54 57.9	E024 04.3
3	N54 58.0	E024 04.4
4	N54 57.9	E024 04.4
5, 6	N54 58.0	E024 04.5
7 - 9	N54 58.0	E024 04.6
10-12	N54 58.0	E024 04.7
13-15	N54 58.0	E024 04.8
40	N54 57.6	E024 04.5

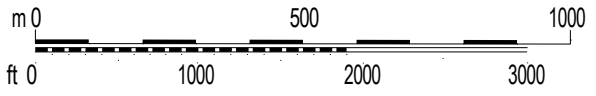
Apron  
ELEV 233

26

08

KAUNAS  
D 14.4 KNA  
KNA

VAR 7° E  
MAG UP  
AD ELEV 256



Not to scale



KUN-EYKA

5-10

SIDs RNAV (Overlay)

AKUMA 1A / DETIG 1A / DETIG 1C / ELEKA 1A / UGNIS 1A / OMNIDIRECTIONAL DEP / AKUMA 1B

RWYs 08 (078°) / 26 (258°)

	GS	120	150	180	210	240	270
6.6%	ft/MIN	900	1100	1300	1500	1700	1900

DESIGNATOR	ROUTING	ALTITUDES
	Runway 08	
AKUMA 1A 6.6% to 4000 124.200 1	at D7.4 KNA LT 348° - crossing R036 KNA LT 268° to AKUMA FMS KA501 [A2200+ ;L] - KA502 [A5000+ ;L] - AKUMA	D7.4 KNA MNM 2200 R036 KNA MNM 5000 <b>initial climb</b> 4000
DETIG 1A 6.6% to 4000 124.200 1	at D7.4 KNA RT 168° - crossing R095 KNA RT 239° - crossing R197 KNA LT 233° to DETIG FMS KA501 [A2200+ ;R] - KA503 [R] - KA505 [F90+ ;L] - DETIG	D7.4 KNA MNM 2200 R197 KNA MNM FL90 <b>initial climb</b> 4000
DETIG 1C 6.6% to 4000 124.200 1	at D7.4 KNA RT 168° - crossing R095 KNA RT 187° - at D12 KNA RT 244° to DETIG FMS KA501 [A2200+ ;R] - KA503 [R] - KA504 [F75+ ;F110- ;R] - DETIG	D7.4 KNA MNM 2200 D12 KNA between FL75 and FL110 <b>initial climb</b> 4000
ELEKA 1A 6.6% to 4000 124.200 1	at D7.4 KNA RT 121° to ELEKA FMS KA501 [A2200+ ;R] - ELEKA	D7.4 KNA MNM 2200 <b>initial climb</b> 4000
UGNIS 1A 6.6% to 4000 124.200 1	at D7.4 KNA LT 348° - crossing R036 KNA LT 315° to UGNIS FMS KA501 [A2200+ ;L] - KA502 [A5000+ ;L] - UGNIS	D7.4 KNA MNM 2200 R036 KNA MNM 5000 <b>initial climb</b> 4000
OMNIDIRECTIONAL DEP 6.6% 124.200	All RWYs	
	climb straight ahead to turning ALT 700 - continue climb to appropriate MSA	
	Runway 26	
AKUMA 1B 6.6% to 4000 124.200 1	at D11.5 KNA RT 280° - at D38 KNA RT 308° to AKUMA FMS KA602 [A5000+ ;R] - KA605 [F170+ ;R] - AKUMA	D11.5 KNA MNM 5000 D38 KNA MNM FL170 <b>initial climb</b> 4000

1 If unable to comply with climb gradient advise ATC.

KUN-EYKA

5-20

SIDs RNAV (Overlay)

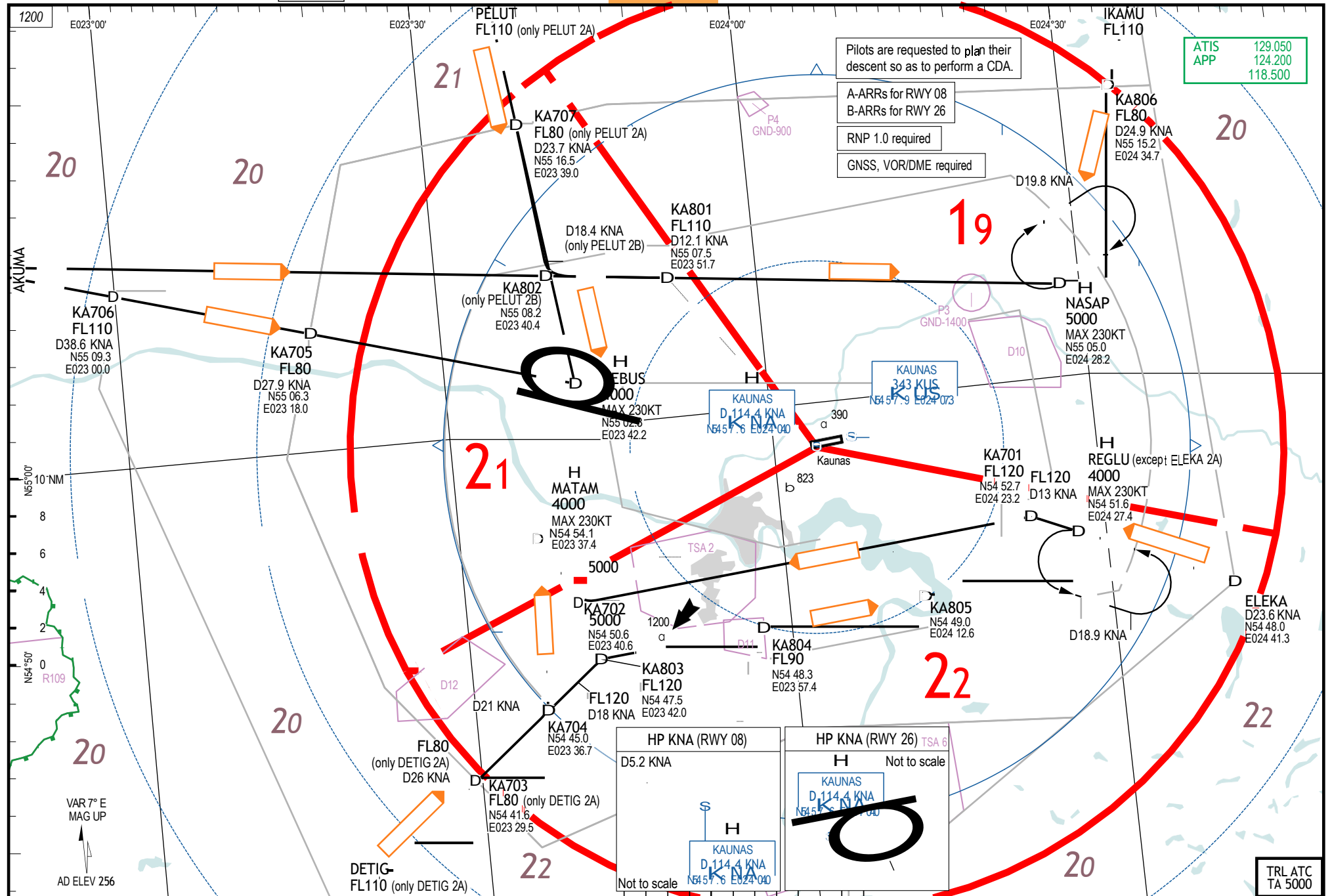
DETIG 1B / ELEKA 1B / ELEKA 1C / UGNIS 1B

RWY 26 (258°)

	GS	120	150	180	210	240	270
6.6%	ft/MIN	900	1100	1300	1500	1700	1900

DESIGNATOR	ROUTING	ALTITUDES
	Runway 26	
DETIG 1B 6.6% to 4000 124.200 1	at D11.5 KNA LT 194° - at D19 KNA RT 217° to DETIG  FMS KA602 [A5000+ ;L] - KA604 [R] - DETIG	D11.5 KNA MNM 5000  <b>initial climb</b> 4000
ELEKA 1B 6.6% to 4000 124.200 1	at D11.5 KNA LT 168° - crossing R236 KNA LT 086° to ELEKA  FMS KA602 [A5000+ ;L] - KA603 [L] - ELEKA	D11.5 KNA MNM 5000  <b>initial climb</b> 4000
ELEKA 1C 6.6% to 4000 124.200 1	at D11.5 KNA LT 168° - crossing R236 KNA LT 142° - at D15 KNA LT 078° - crossing R145 KNA LT 068° to ELEKA  FMS KA602 [A5000+ ;L] - KA603 [L] - KA606 [F110- ;L] - KA607 [L] - ELEKA	D11.5 KNA MNM 5000 D15 KNA MAX FL110  <b>initial climb</b> 4000
UGNIS 1B 6.6% to 4000 124.200 1	at D5.2 KNA RT 348° to UGNIS  FMS KA601 [A2200+ ;R] - UGNIS	D5.2 KNA MNM 2200  <b>initial climb</b> 4000

<sup>1</sup> If unable to comply with climb gradient advise ATC.



以上内容仅为本文档的试下载部分，为可阅读页数的一半内容。如要下载或阅读全文，请访问：<https://d.book118.com/597015020110006032>