

# Blacks in Space: Land Tenure and Well-being in Perry County, Alabama

Rory Fraser

Center For Forestry and Ecology  
Alabama A&M University

# Presentation Outline

- Introduction
- Background and Historical Aspects of Land Tenure and Well-being
- Proposed Study
- Data Collection, Analysis
- Results
- Conclusion

# Introduction

- *“In spite of the great socio-economic importance of forests in the South, we still know relatively little about the relationships between forests and minority and limited resource landowners”*

- (Schelhas and Zabawa 2000).

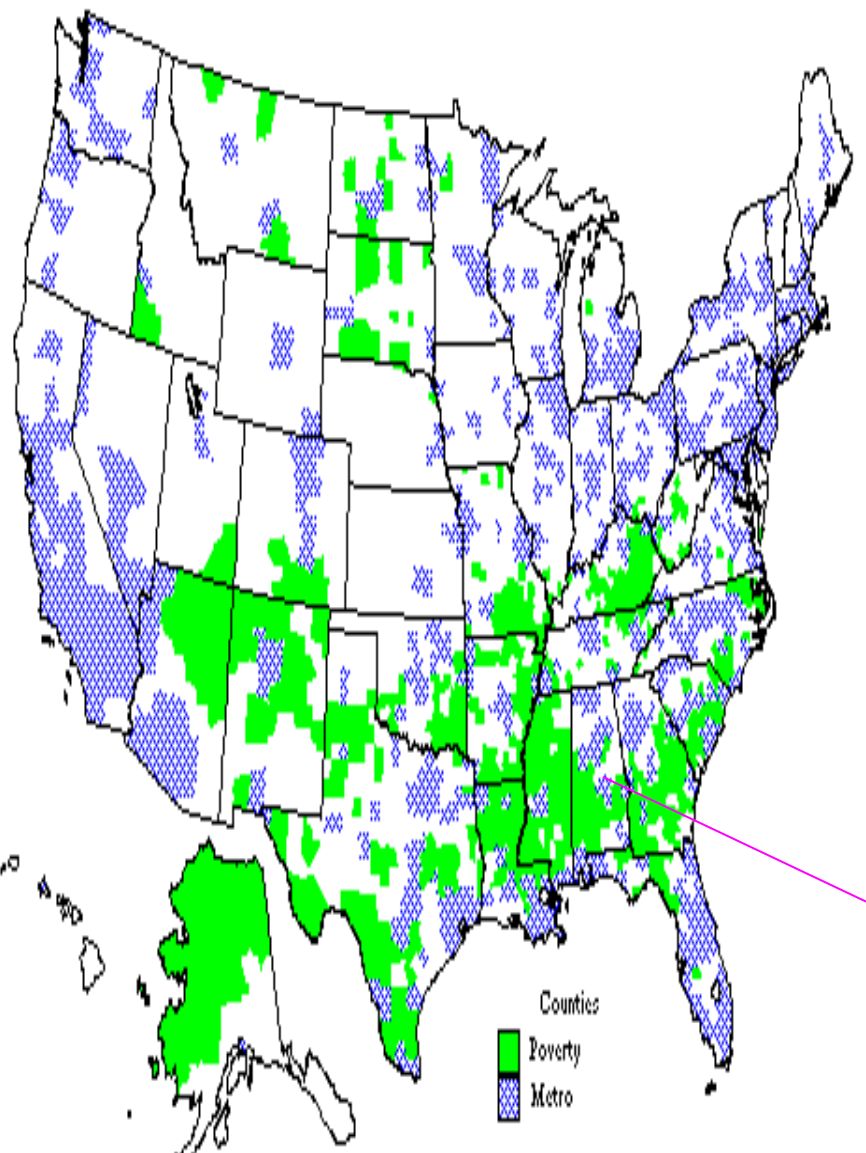
- Previous efforts to understand persistent poverty in the south focused on the role of farm size, ownership type and the barriers related to institutions services, and racial discrimination

Importance of the relationship between spatial distribution of land tenure arrangement and wellbeing...needs to be explored

(Bliss et al., 1998)

- This study investigated the relationship between land tenure and well-being in a spatial perspective.

# Nonmetro Persistent Poverty Counties, 1990\*

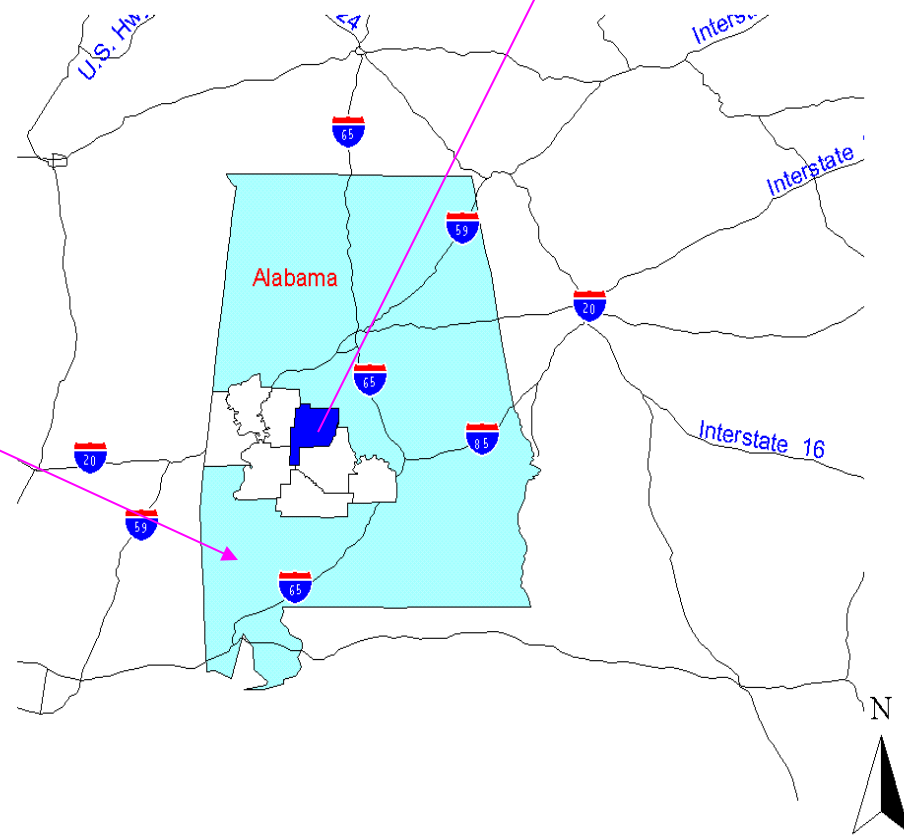


\*Counties with 20% or more of persons in poverty in each of the years 1960, 1970, 1980, and 1990.

Rural Economy Division,  
Economic Research Service, USDA  
using data from Bureau of the Census

# Study Area

## Perry County, Alabama



# Land use land cover and Tenure changes

## 1. Pre-Colonial

## 2. Plantations and King Cotton

## 3. Reconstruction & Jim Crow

## 4. Farm mechanization, Boll Weevil and WW1

## 5. New Deal Programs

## 6. Emergence of Forest Regime

- Conversion of agricultural land and intensive management of virgin forest land
- Alabama legislation: balance agriculture with industry
- Opening of Pulp and Paper industries
- Single species plantation
- Change in landscape and tenancy
- Fragmentation or consolidation of land

# Change in land use land cover and tenancy

yeoman farmer →

plantation system →

sharecropping →

individual small farmers →

commercial farmers →

large forest plantations

# Study Objectives

1. Examined the relationship between land tenure and well-being in a rural, predominantly Afro-American County
  1. Examined the concentration of Afro-Americans and the well-being of the Afro-American Population at the block groups level.
  2. Explored the spatial relationship between well-being and land cover type and compared this relationship between whites and Afro-American groups

# Data and Methodology

## 1. Census 2000 Data

Census Block Group (CBG) level. well-being measures - population, race, income, education and poverty.

## 2. Digitized Plat (Ownership) Maps

Ownership maps were digitized - parcels for each land-ownership category (Forest Industry, National Forest, etc.)

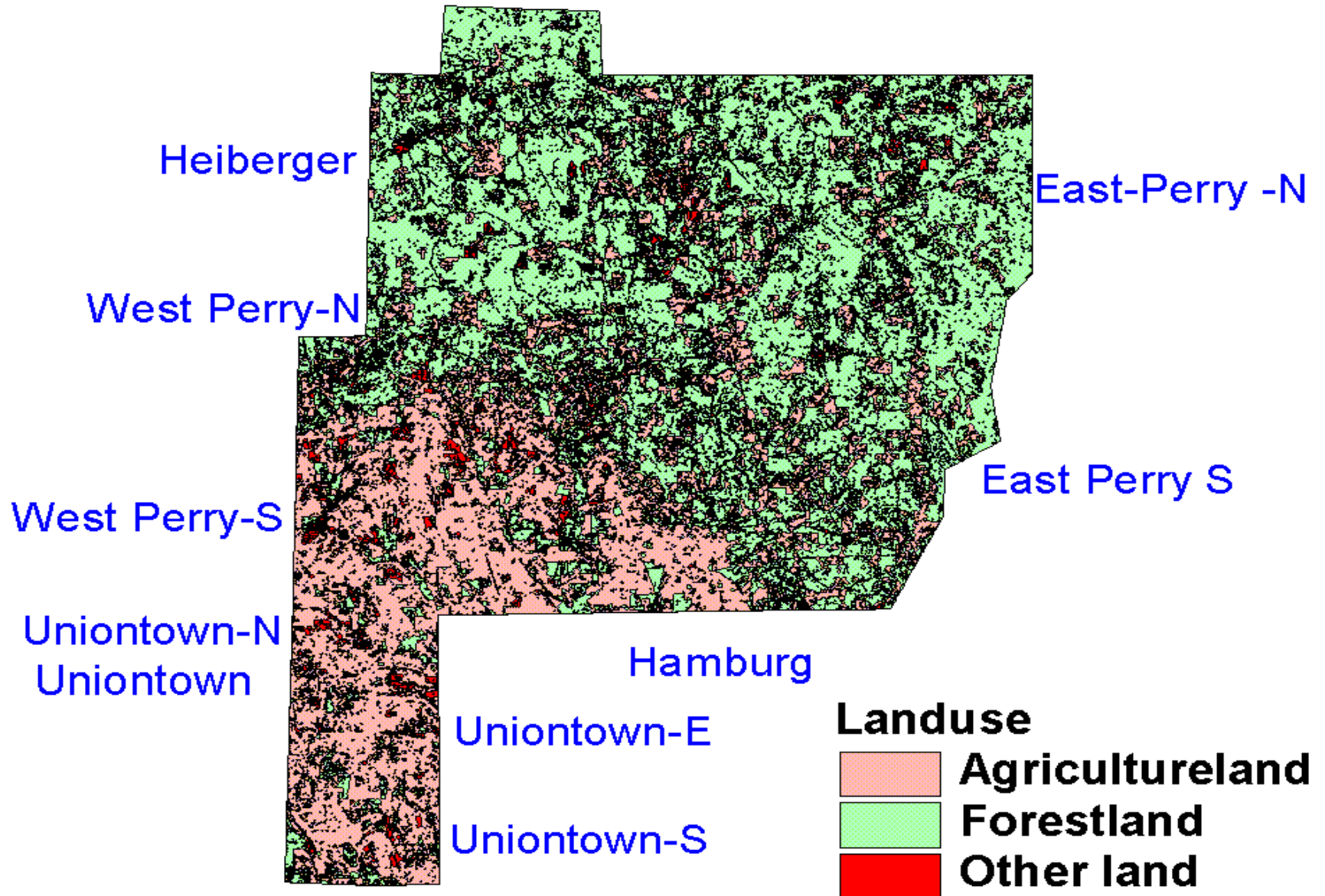
## 3. Landsat <sup>ETM</sup> 2000 Satellite Data

Image processed and classified into Cropland, Forestland and Other category using ERDAS Imagine 8.6 and ArcView 3.3

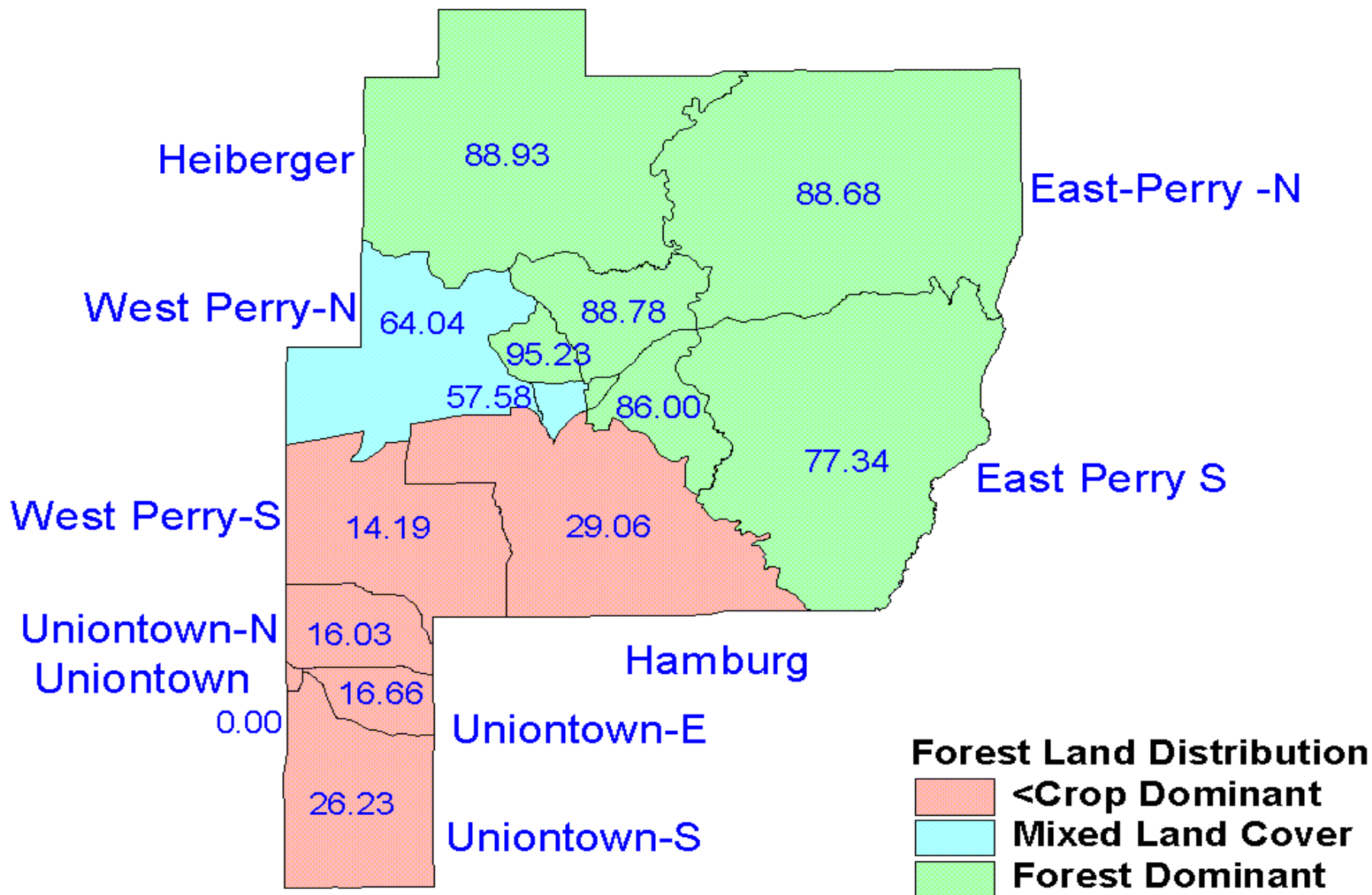
These layers were overlaid for further Analysis



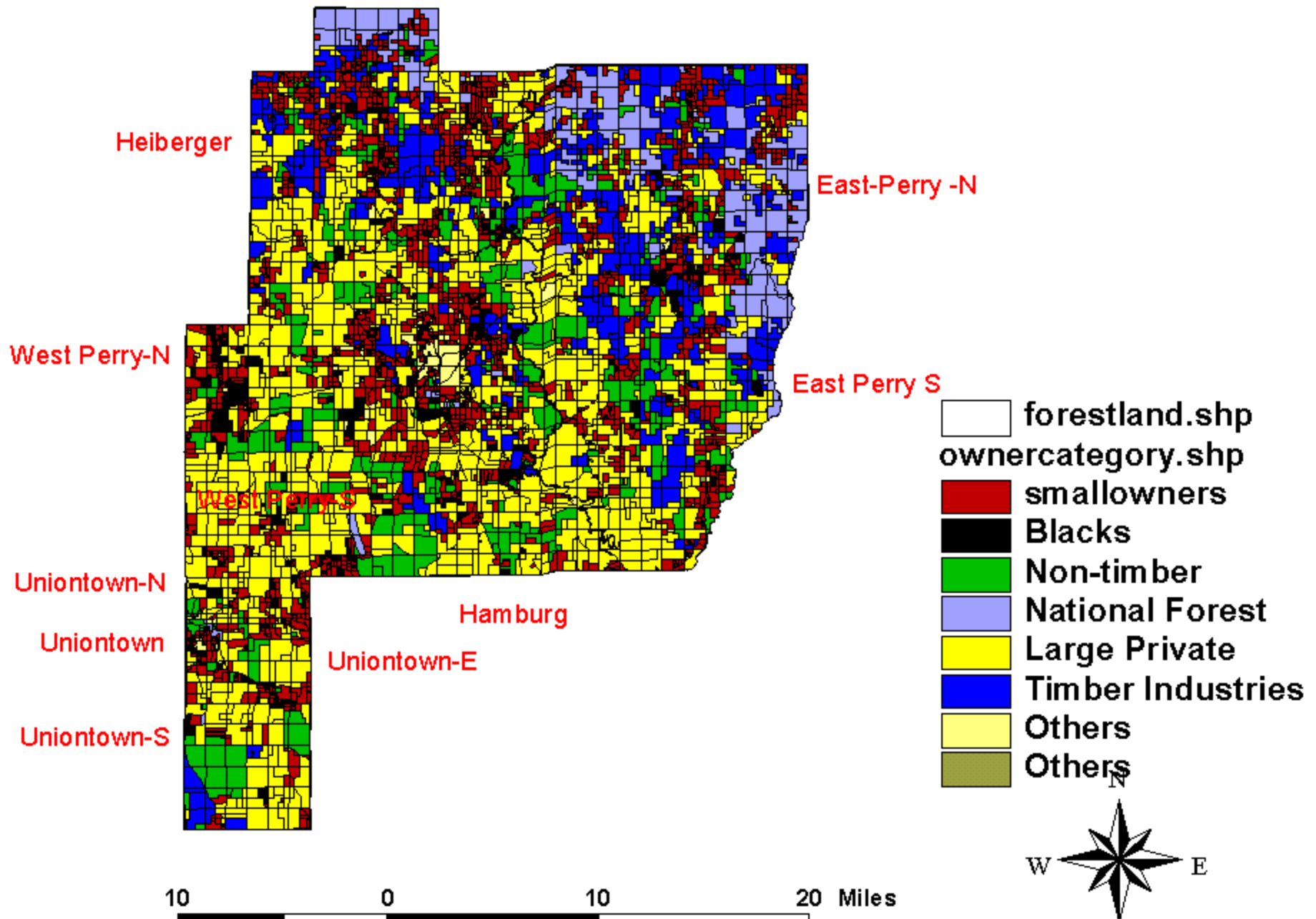
# Classified Landsat ETM 2000 Image of Perry County



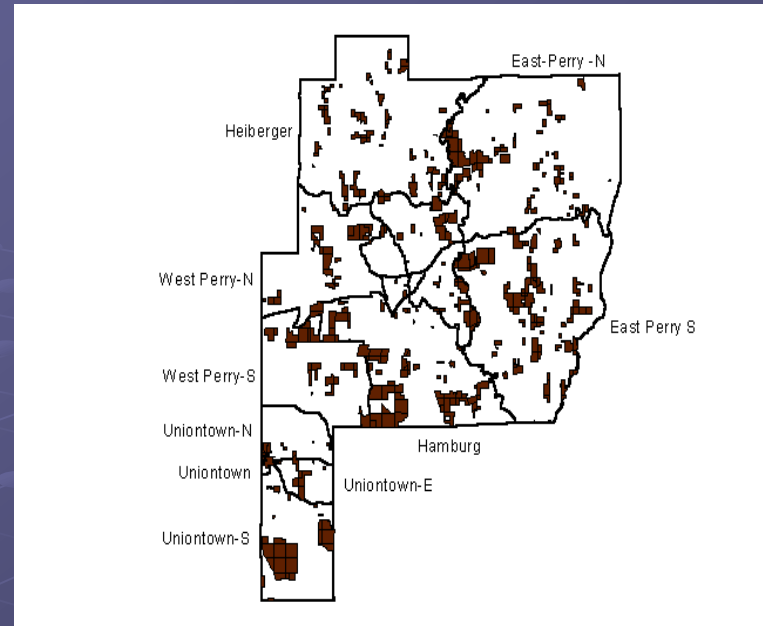
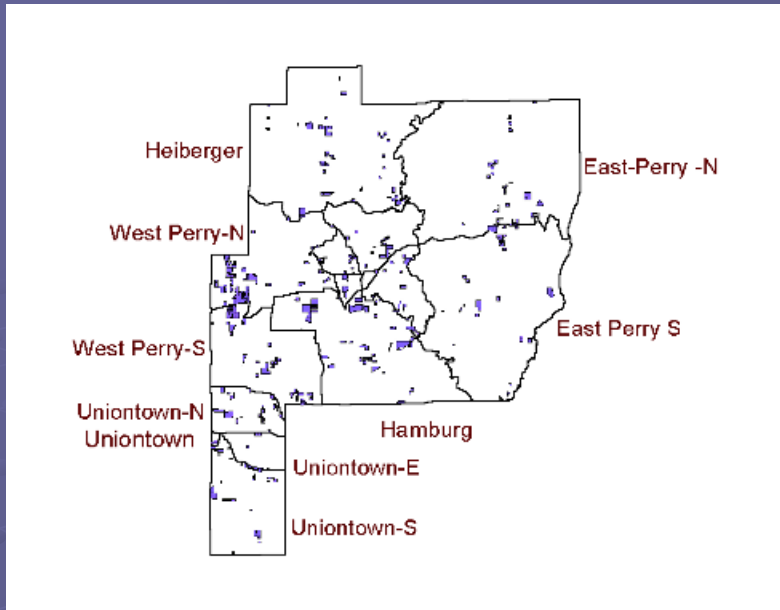
# Forestland Distribution in 15 Block Groups



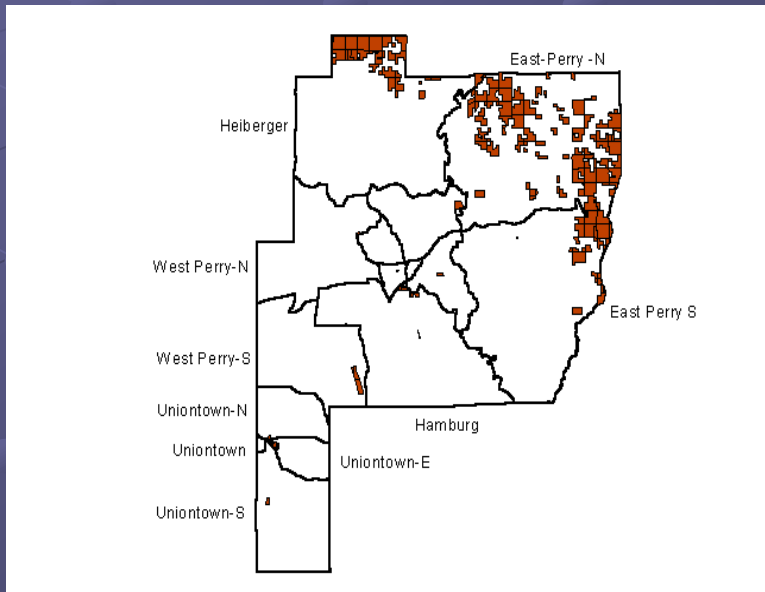
# Landowners Category in Perry County



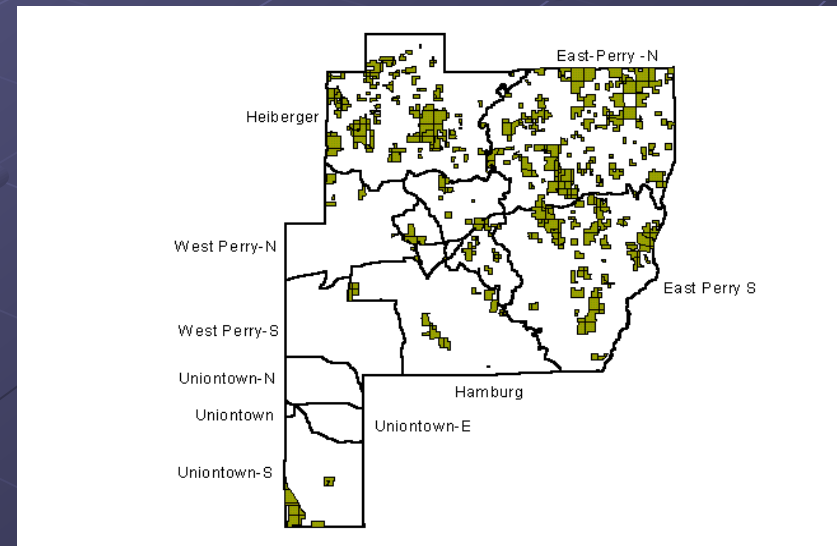
# Spatial Arrangement of different landownership category in Perry County



## Afro-American Parcels



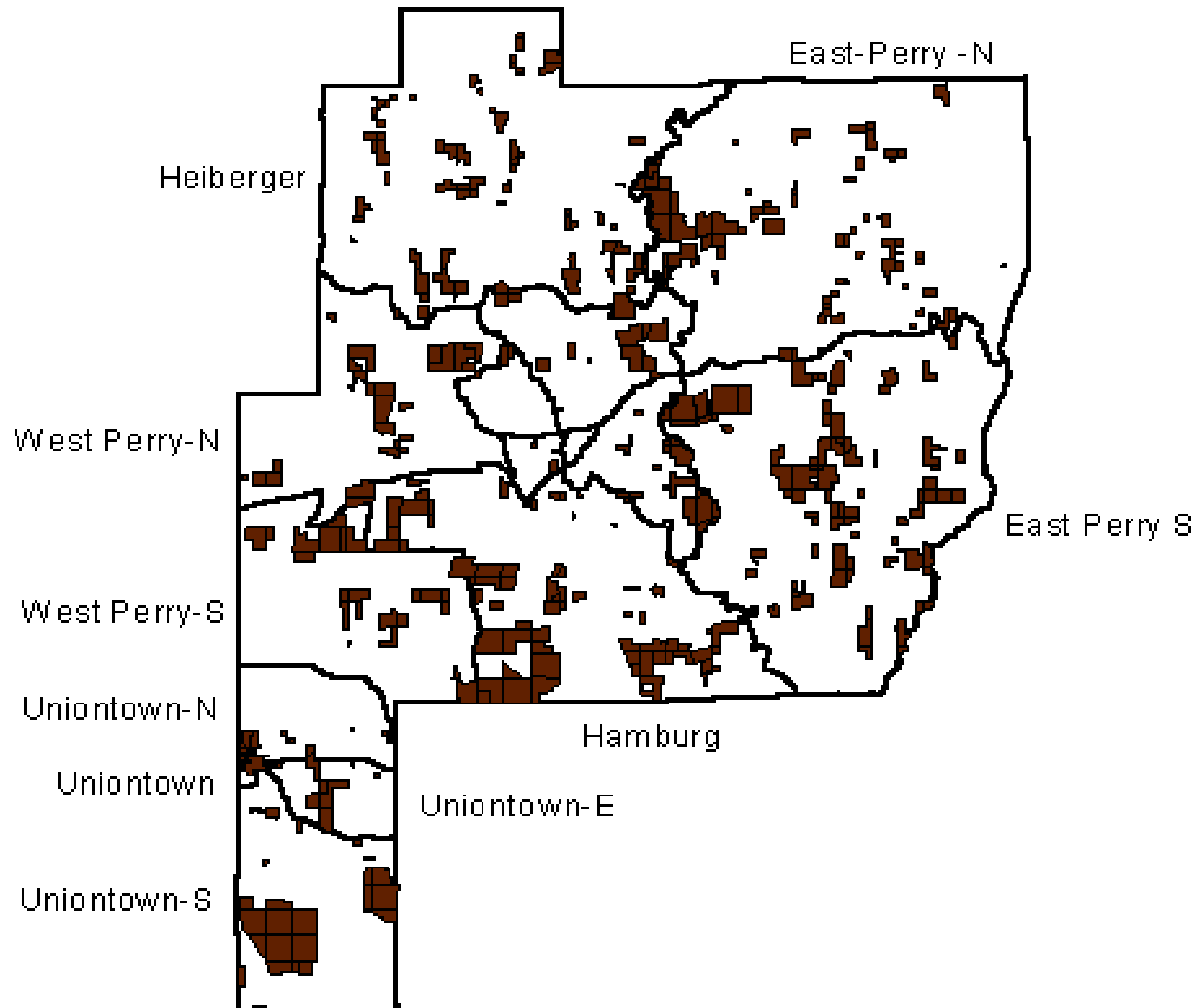
## Non-Timber Industry Parcels



## National Forest Parcels

## Timber Industry Parcels

# Spatial Arrangement of Non-Timber Industry Parcels in Perry Co.



以上内容仅为本文档的试下载部分，为可阅读页数的一半内容。如要下载或阅读全文，请访问：<https://d.book118.com/618032016020006135>