



CF-1700



使用手冊

V2.00

2007/02/28

聯暘電子股份有限公司

[Sunion Electronics Corporation](http://www.sunion.com.tw/)

台北縣三重市興德路 123-7 號 11 樓

TEL : +886-2-8512-1456 FAX : +886-2-8512-1457

<http://www.sunion.com.tw/>

— 目錄 —

I. CF-1700 讀寫機規格表	3
II. CE/FCC 聲明	4
III. CF-1700 操作流程圖	6
IV. 通訊格式	7
V. CF-1700 指令列表	8
VI. CF-1700 指令說明	9

版權聲明

本手冊是由“聯暘電子股份有限公司 Sunion Electronics Corp.”所編寫；“聯暘電子股份有限公司 Sunion Electronics Corp.”保留一切對本手冊編輯修改之權利，任何第三人不得於未經“聯暘電子股份有限公司 Sunion Electronics Corp.”書面授權之情況下複製、編輯、修改及引用本手冊之內容。

“聯暘電子股份有限公司 Sunion Electronics Corp.”擁有不經通知修改或改良本手冊所述之內容的權利。

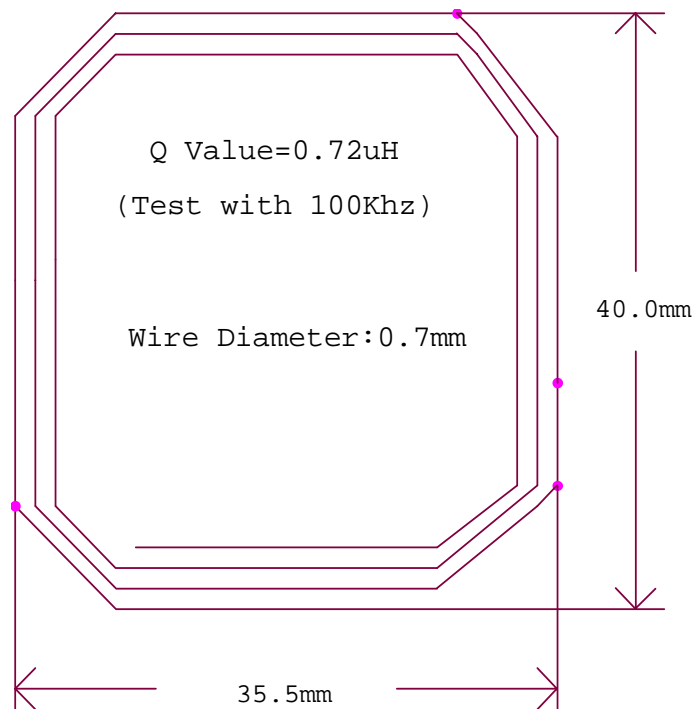
I. CF-1700 讀寫機規格表

1. 讀寫機規格表

產品型號	CF-1700T
工作頻率	13.56 MHz
最大讀取距離*	9 ~ 10 cm
支援感應器型式	Read/ Write (ISO-15693): Tag-it HF-I Plus; I-Code II; Tag-it HF-I Pro; My-d Plain mode; EM-4135
建議作業平台	PDA with WinCE based O/S
傳輸介面	Compact Flash Type I
尺寸	84mm x 43mm x 6mm (L x W x H)
傳輸速率	9600 baud, 8 data bits, no parity, 1 start bit, 1 stop bit
供電來源	PDA Supplied
消耗電流	15mA(Max) in operation, 4mA in idle
工作溫度	0°C ~ 55°C
儲存溫度	5 ~ 95%RH non-condensing

* 讀取距離及性能取決於不同的感應器及其品質的不同而不同。

2. 天線規格:



II. CE/FCC 聲明

1. FCC INFORMATION:

A. Notice:

The changes or modifications not expressly approved by the party responsible for compliance could void the user's authority to operate the equipment.

B. The Federal Communication Commission Radio Frequency Interference Statement includes the following paragraph:

The equipment has been tested and found to comply with the limits for a Class B Digital Device, pursuant to part 15 of the FCC Rules. These limits are designed to provide reasonable protection against harmful interference in a residential installation. This equipment generates, uses and can radiate radio frequency energy and, if not installed and used in accordance with the instruction, may cause harmful interference to radio communication. However, there is no grantee that interference will not occur in a particular installation. If this equipment does cause harmful interference to radio or television reception, which can be determined by turning the equipment off and on, the user is encouraged to try to correct the interference by one or more of the following measures:

- Reorient or relocate the receiving antenna.
- Increase the separation between the equipment and receiver.
- Connect the equipment into an outlet on a circuit different from that to which the receiver is connected.
- Consult the dealer or an experienced radio/TV technician for help.

C. FCC Caution:

To assure continued compliance, (example – use only shielded interface cables when connecting to computer or peripheral devices). Any changes or modifications not expressly approved by the party responsible for compliance could void the user's authority to operate this equipment.

This transmitter must not be co-located or operating in conjunction with any other antenna or transmitter.

D. FCC Radiation Exposure Statement:

This equipment complies with FCC radiation exposure limits set

forth for an uncontrolled environment. This equipment should be installed and operated with minimum distance 20 cm between the radiator & your body.

his device complies with Part 15 of the FCC Rules. Operation is subject to

the following two conditions: (1) This device may not cause harmful interference, and (2) this device must accept any interference received, including interference that may cause undesired operation. The user should not modify or change this equipment without written approval from **SUNION Electronic Corporation**. The modification could void authority to use this equipment.

2. CE compliance announcement:

The CF-1700T has also to complied with following CE regulations:

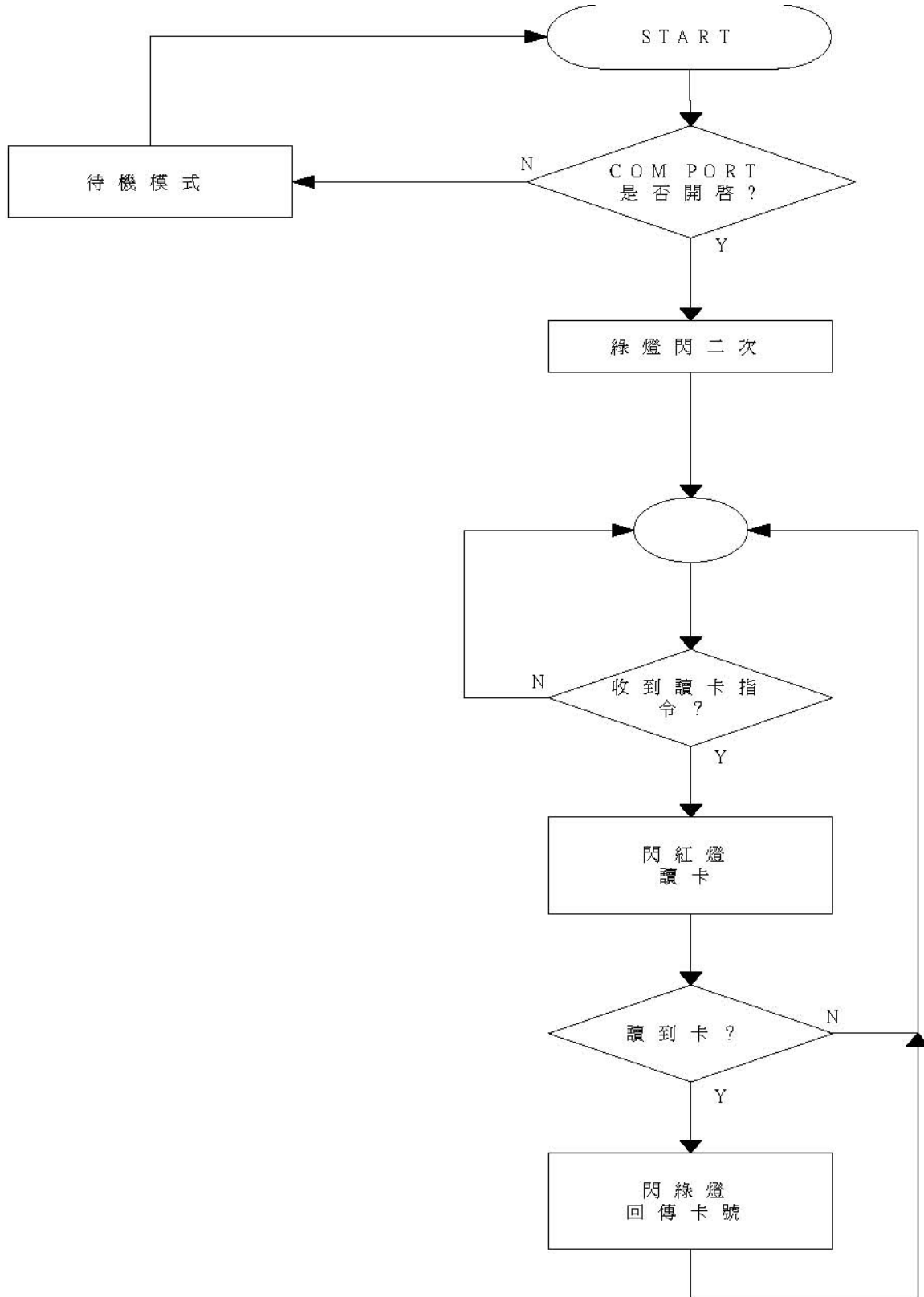
EN 301 489-1-3 for EMC

EN 300 330 –2/ -1 for RF

EN 60950-1 for LVD

3. Should you have any inquiries regarding the legality to use this product in your country, please feel free to contact us for more information.

III. CF-1700 操作流程圖



IV. 通訊格式

本機採國際標準 **UART** 通訊方式，其傳輸速率為 **9600.N.8.1**。

資料通訊格式如下：

HEADER						DATA			CHECK
SOH	PT	ID1	ID2	FC1	FC2	STX	DATA	ETX	BCC
01H	識別	讀卡機 ID		功能碼		02H	資料	03H	檢查碼

說明：

1.SOH、STX、ETX 都是一個 Byte 的控制字元，其定義為：

SOH = 01H，STX = 02H，ETX = 03H。

其中**SOH**為整筆指令的起始字元；

STX為資料起始字元，

ETX為資料結束字元。請依此來判斷傳送或是接收資料的長度。

※傳送接收資料的長度會依功能的不同而變動※

2.PT (Packet Type) 用來識別訊息來源。若是控制主機傳出的訊息則使用大寫“S”，若為讀卡機傳回的訊息使用小寫“s”。

3.ID1 和 ID2 兩個 Byte 是讀卡機的 ID 指示碼，其值固定為 "01"。

4.FC1 和 FC2 是功能碼 (FUNCTION CODE) 和 DATA 有相關性，這些相關性資料請參考下一頁說明。

5.BCC 乃為檢查碼，是從 SOH 到 ETX 每一個 Byte 作 xor (互斥) 後，再 or 20H。

例：送出如下指令：

SOH	"S"	"01"	"A1"	STX	"010"	ETX	BCC
-----	-----	------	------	-----	-------	-----	-----

BCC = 01H xor 53H xor 30H xor 31H xor 41H xor 31H xor 02H
Xor 30H xor 31H xor 30H xor 03H or 20H =33H

V. CF-1700 指令列表

項次	功能碼	功 能 說 明	頁次
1	"A1"	讀取卡片並傳回卡號	9
2	"A9"	讀取卡片並傳回卡號及機器序號	10
3	"E1"	傳回機器型號、版本	11
4	"E2"	重置讀寫機	12
5	"K0"	讀取某頁資料	13
6	"K1"	寫入某頁資料	14
7	"K2"	鎖住某頁資料	16
8	"K9"	Multi RFID Functions	17

VI. CF-1700 指令說明

1. “A1” (讀取卡片並傳回卡號)

控制主機發送訊息：

SOH	“S”	ID1	ID2	“A”	“1”	STX	ETX	BCC
-----	-----	-----	-----	-----	-----	-----	-----	-----

CF Card 回應訊息：

SOH	“s”	ID1	ID2	“A”	“1”	STX	data	ETX	BCC
-----	-----	-----	-----	-----	-----	-----	------	-----	-----

資料說明：

(1) data 的內容為傳回的卡片型態 (1 byte) + 卡片號碼 (16 bytes)。

功能說明：

- (1) 機器收到此指令時，才會讀卡，讀到的卡號即放在 data 中回傳。
- (2) CF Card 沒有讀到卡號時，則傳回的資料中 data 即為“N”。
即 STX + “N” + ETX。

範例：

主機傳送：

SOH + "S01A1" + STX + ETX + BCC

CF Card 回應：

SOH + "s01A1" + STX + " N " + ETX + BCC (“N”表示尚未讀到卡號)

SOH + "s01A1" + STX + "ME007000000123456" + ETX + BCC

說明：

1. CF Card 回應的卡片型態為 **Multi-Page Type**，卡片號碼為 "E007000000123456"。

2. “A9” (讀取卡片並傳回卡號及機器序號)

控制主機發送訊息：

SOH	“S”	ID1	ID2	“A”	“9”	STX	ETX	BCC
-----	-----	-----	-----	-----	-----	-----	-----	-----

CF Card回應訊息：

SOH	“s”	ID1	ID2	“A”	“9”	STX	data	ETX	BCC
-----	-----	-----	-----	-----	-----	-----	------	-----	-----

資料說明：

(1) data 的內容為傳回的卡片型態 (1 byte) + 卡片號碼 (16 bytes) + 保留 (4 bytes) + 機器序號 (8 bytes)。

功能說明：

(1) 機器收到此指令時，才會讀卡，讀到的卡號即放在data中回傳。

(2) CF Card沒有讀到卡號時，也會回傳機器序號，傳回的資料中data 即為“N” (1 byte) + 保留 (3 bytes) + 機器序號 (8 bytes)。

範例：

主機傳送：

SOH + "S01A9" + STX + ETX + BCC

CF Card回應：

SOH + "s01A9" + STX + " N00012345678 " + ETX + BCC (“N”表示尚未讀到卡號)

SOH + "s01A9" + STX + "ME007000000123456000012345678" + ETX + BCC

說明：

1. CF Card 回應的卡片型態為 **Multi-Page Type**，卡片號碼為 "E007000000123456"，機器序號為 "12345678"。

以上内容仅为本文档的试下载部分，为可阅读页数的一半内容。如要下载或阅读全文，请访问：<https://d.book118.com/636122013115010034>