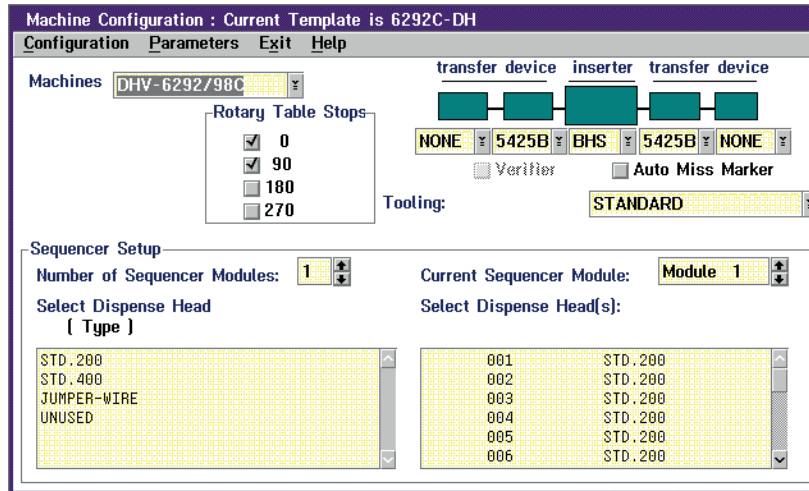


Machine Configuration

47065906 Rev. -

Introduction



Use the Machine Configuration window to define the hardware configuration of the machine. While, the machine configuration is set at the factory, it may be necessary to change the configuration if options are added to or removed from the machine.

The example above shows a typical Machine Configuration window for a DHV-6292/98C with board handling and elevators, standard tooling, and rotary table stops removed for 180° and 270° orientations. A sequencer is configured so a pattern can be exported for a sequencing machine.

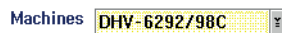
The Window

The Machine Configuration window contains the following data items.

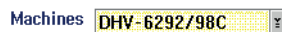
NOTE

Refer to the machine specific operation reference manual for specific configuration information.

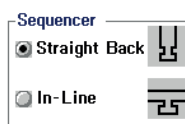
- **Machines:**



- Machine: The list box displays the machine type on which IM-UPS is installed. This cannot be changed.



- Standalone PC: This list box contains the available machine types. Select the desired machine type. The PC assumes the characteristics of the selected machine type.



- **Sequencer Configuration:** (Sequencing machines only) Select the type of sequencer configuration installed on the machine. (Refer also to the *Sequencer Setup* paragraph later in this module.)

- In-Line: Sequencer is parallel to the machine.

- Straight Back: Sequencer is perpendicular to the machine.



- **Rotary Table Stops (Dual Head machines only):** These checkboxes allow the removal of selected rotary table stops. This allows the table to rotate past stops for which no insertions are programmed which decreases processing time.

Rotary Table Stops

<input checked="" type="checkbox"/>	0
<input checked="" type="checkbox"/>	90
<input type="checkbox"/>	180
<input type="checkbox"/>	270

For example, if all insertions can be made in the 0° and 90° orientations, the 180° and 270° stops can be removed. This means that when the 90° insertions are done, the table rotates all the way to the 0° orientation without stopping.



This configuration must match the actual rotary table stop configuration on the machine or unpredictable machine behavior may occur.

- Select the checkbox (checkmark visible) to indicate the rotary table stop is installed at that position.
- Clear the checkbox (no checkmark) to indicate the rotary table stop is removed at that position.



A maximum of two rotary table stops can be removed. The 0° stop cannot be removed.

- **Board Handling/Transfer Device:** These choices indicate if a board handling system is mounted and if it is, the position of the transfer devices in relation to the insertion machine. Each position has a list box that contains the possible choices. Select the arrow to the right of the list box to select the appropriate device.

transfer device	inserter	transfer device
<input type="checkbox"/>	<input type="checkbox"/>	<input type="checkbox"/>
NONE	BHS	NONE
5425B	5425B	5425B

- Inserter: Select **BHS** if the machine is equipped with a board handling system. This enables all board handling options in IM-UPS. Select **NONE** if there is no board handling system. Selecting **NONE** disables (gray out) all board handling system options in IM-UPS. The insertion machine options do not change.
- Transfer Device: IM-UPS can communicate with one or two devices on each side of the insertion machine. For each transfer device list box, select the device mounted on the machine. If a device other than UIC elevators is mounted (for example, destacker or conveyor) select **OTHER**. If a device is not mounted in that position, select **NONE**.

Verifier

- **Verifier:** (Not available on Dual Head 8 machines) Select this checkbox (checkmark visible) if the Expanded Range Verifier (ERV) is mounted on the machine. Clear this checkbox (no checkmark) if the ERV is not mounted.

Machine Configuration

47065906 Rev. -

Auto Miss Marker

- **Auto Miss Marker:** (Axial machines only) Select this checkbox (checkmark visible) if the auto miss marker hardware is mounted on the machine. Clear this checkbox (no checkmark) if the auto miss marker hardware is not mounted.

Tooling:

- **Tooling:** Select the type of insertion tooling that is used on the machine.

Clinch:

- **Clinch (Radial machines only):** Select the type of clinch that is mounted on the machine.

Sequencer Setup

Number of Sequencer Modules:

Current Sequencer Module:

Select Dispense Head (Type)

12.7MM	001	UNUSED
15MM	002	UNUSED
UNUSED	003	UNUSED
	004	UNUSED
	005	UNUSED
	006	UNUSED

- **Sequencer Setup (Sequencing machines only):** The information in this group box defines the dispense heads mounted on the sequencer. (For details, refer to the machine specific operation reference manual.)
 - Number of Sequencer Modules: This list box defines the number of sequencer modules mounted on the machine. There are 20 dispense heads for each sequencer module, however, all dispense heads within a module do not have to be defined.
 - Select Dispense Head (Type): This list box contains the valid types of dispense heads available for the selected machine.
 - Current Sequencer Module: Use this list box to define or display the sequencer module number and its associated dispense heads.
 - Select Dispense Head(s): This list box contains the dispense head numbers for the selected sequencer module. For example, if sequencer module 2 is selected, dispense heads 21 through 40 are displayed.

Configuration



Select the Configuration menu bar heading to display a pulldown menu containing the following options.

- Open
- Save
- Save As
- Import

- Export
- Delete
- Print

NOTE

If IM-UPS is configured for a standalone PC, machine configurations can only be saved as configuration templates. These configuration templates can then be used with the Product Editor to create products unique to that machine configuration. (Refer to the *Product Editor* module for details.)

Open

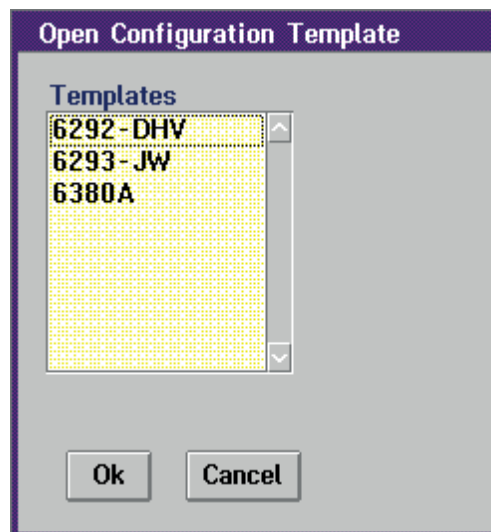
Use the Open menu option to open any previously displayed configuration template.

To open a machine configuration template:

1. From the main IM-UPS screen:

System Setup > Machine > Configuration > Configuration > Open

The Open Configuration Template dialog box is displayed.



2. Select the template to open.
3. Select **OK**. The selected template is displayed in the Machine Configuration window.

以上内容仅为本文档的试下载部分，为可阅读页数的一半内容。如要下载或阅读全文，请访问：<https://d.book118.com/648022010113006117>