

**GENERAL**

**Operational Hours**

**ATS Hours:** H24

**AD Operator Hours:** Not AVBL

**Airport Information**

**RFF:** CAT 9

**Fuel:** Not AVBL

**PCN:** RWY 12/30: 70/F/A/X/T

**Customs:** Not AVBL

**Warnings**

**SGA VOR/DME** unusable: R175-R185.

**ARRIVAL**

**Communication**

**COM Failure:** See CRAR.

**Arrival Procedure**

**Non-standard GP intercept position on RWY 12**

GP intercepts RWY 12 at *320m / 1049ft* after landing threshold.

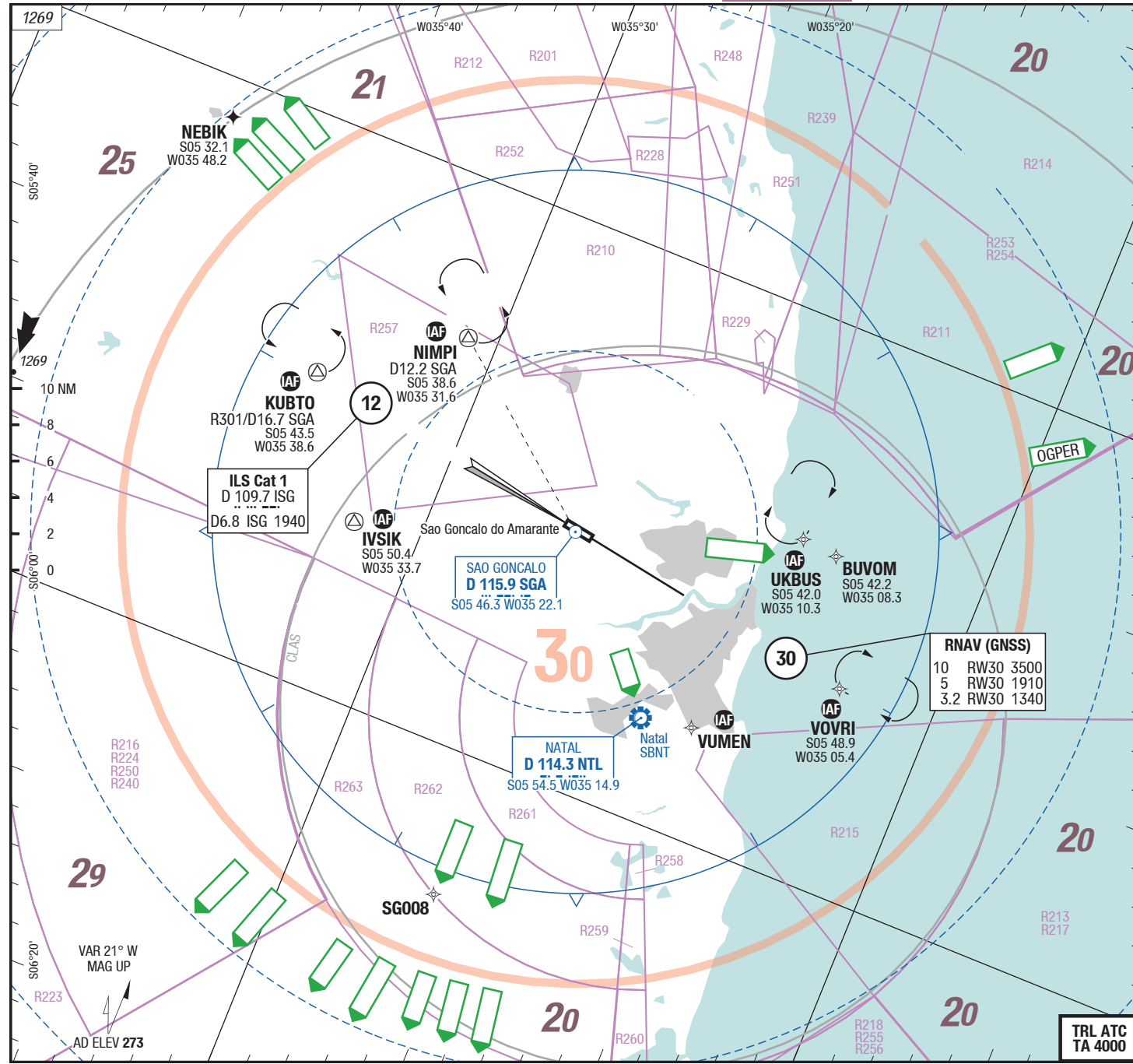
Remaining DIST beyond GP is *2680m / 8794ft*.

**DEPARTURE**

**Take-off Minima**

RWY		12/30	
Multi ENG	ft - m/km	0 - 400R/600V	TKOF ALTN AVBL
All ACFT		c500 - 1.8V	-

2-10



D-ATIS	127.600
Recife ACC	128.050 135.800
Natal APP	119.300 119.650
TWR	118.200 118.850
GND	121.700
DLV	121.000

**Landing RWY system:**

**12** 3000 x 60 3.0° 30 ML 15 ML

700

HL-NF **THR 273** (10hPa) / TDZ 273 (---%) -0.1%

**30** 30 ML 15 ML 60 x 3000 3.0°

+0.1% TDZ --- (---%) / **THR 263** (10hPa)

Changes: APL

3-20

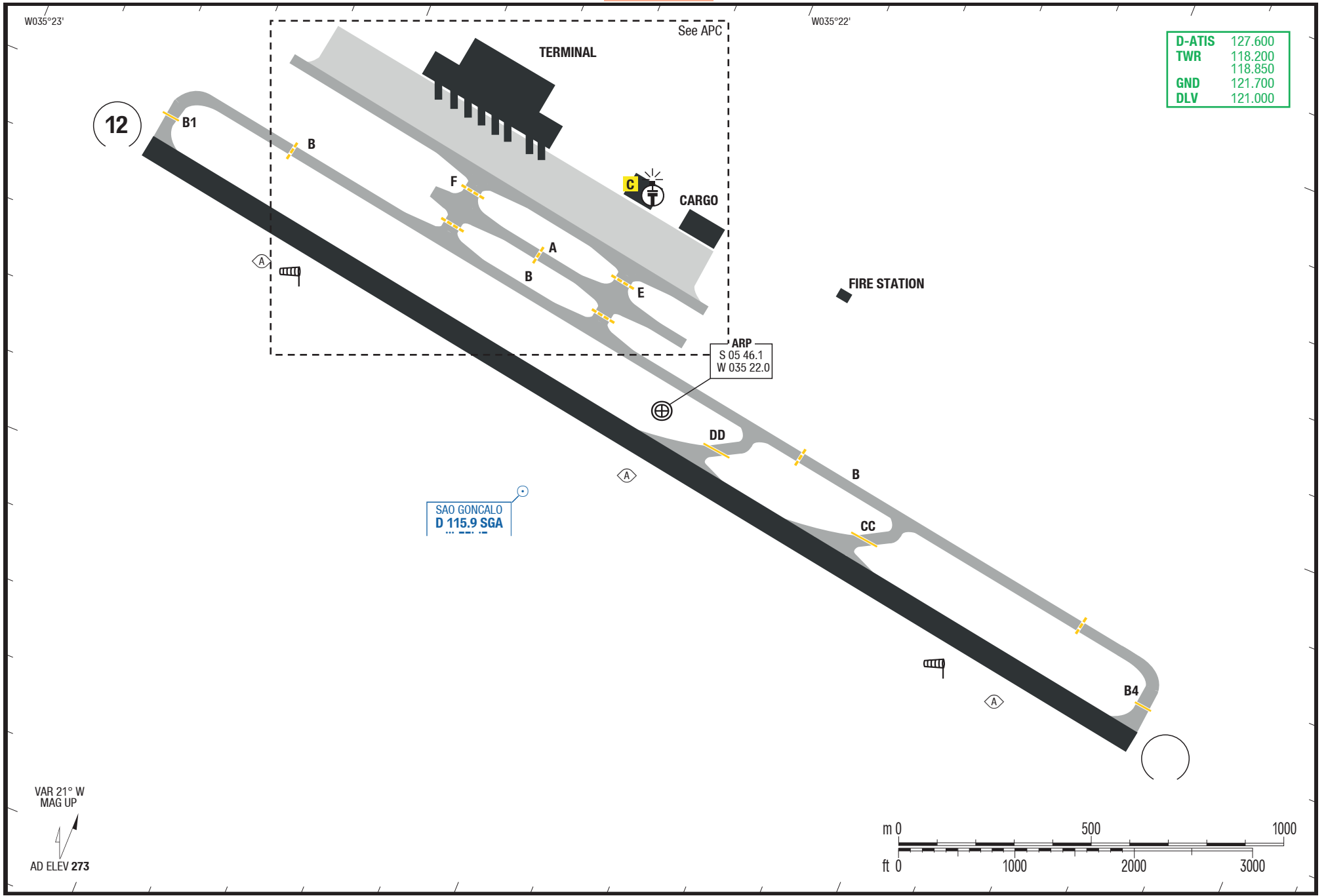
AGC

AGC

AGC

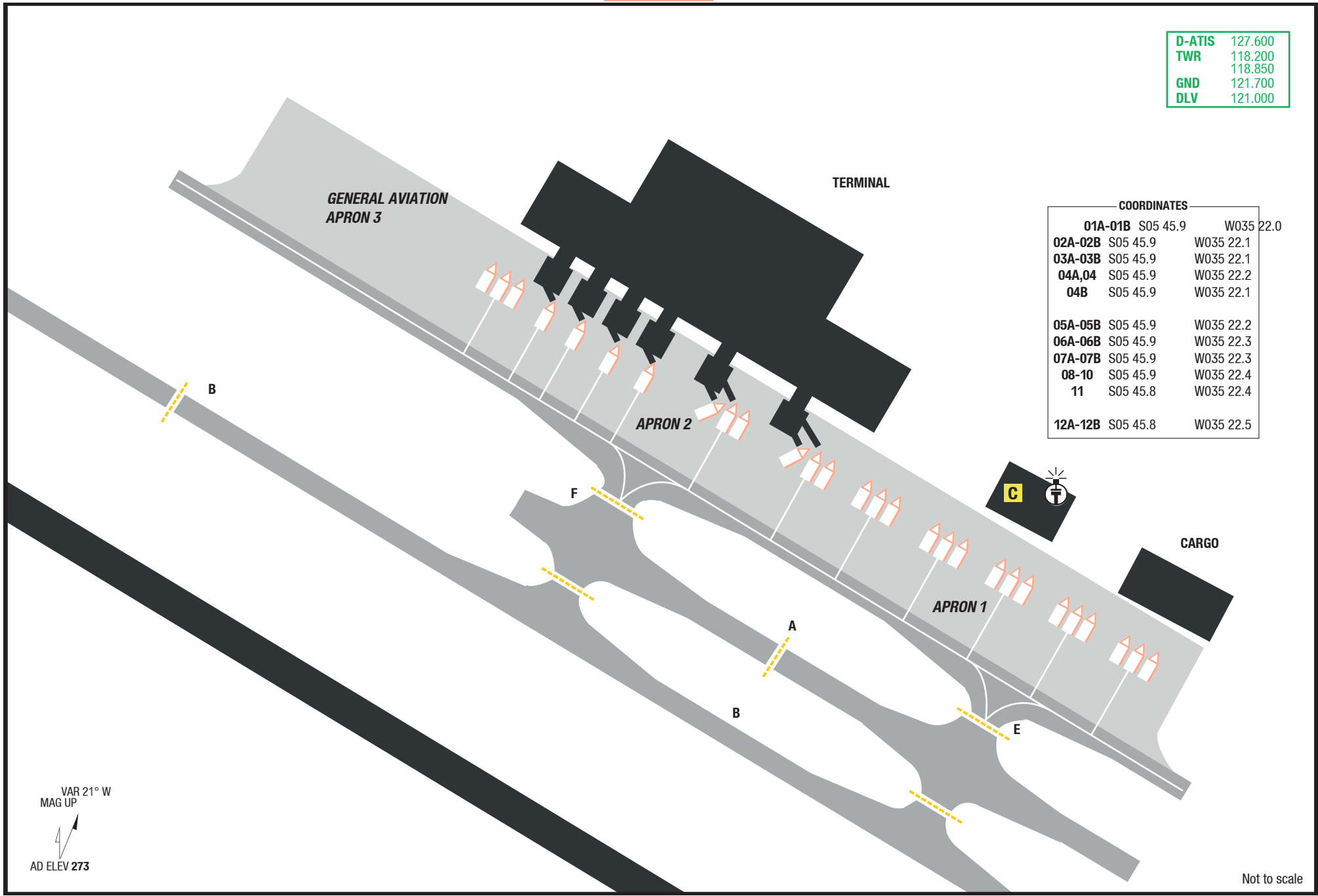
AGC

D-ATIS	127.600
TWR	118.200
	118.850
GND	121.700
DLV	121.000



3-30

D-ATIS	127.600
TWR	118.200
	118.850
GND	121.700
DLV	121.000



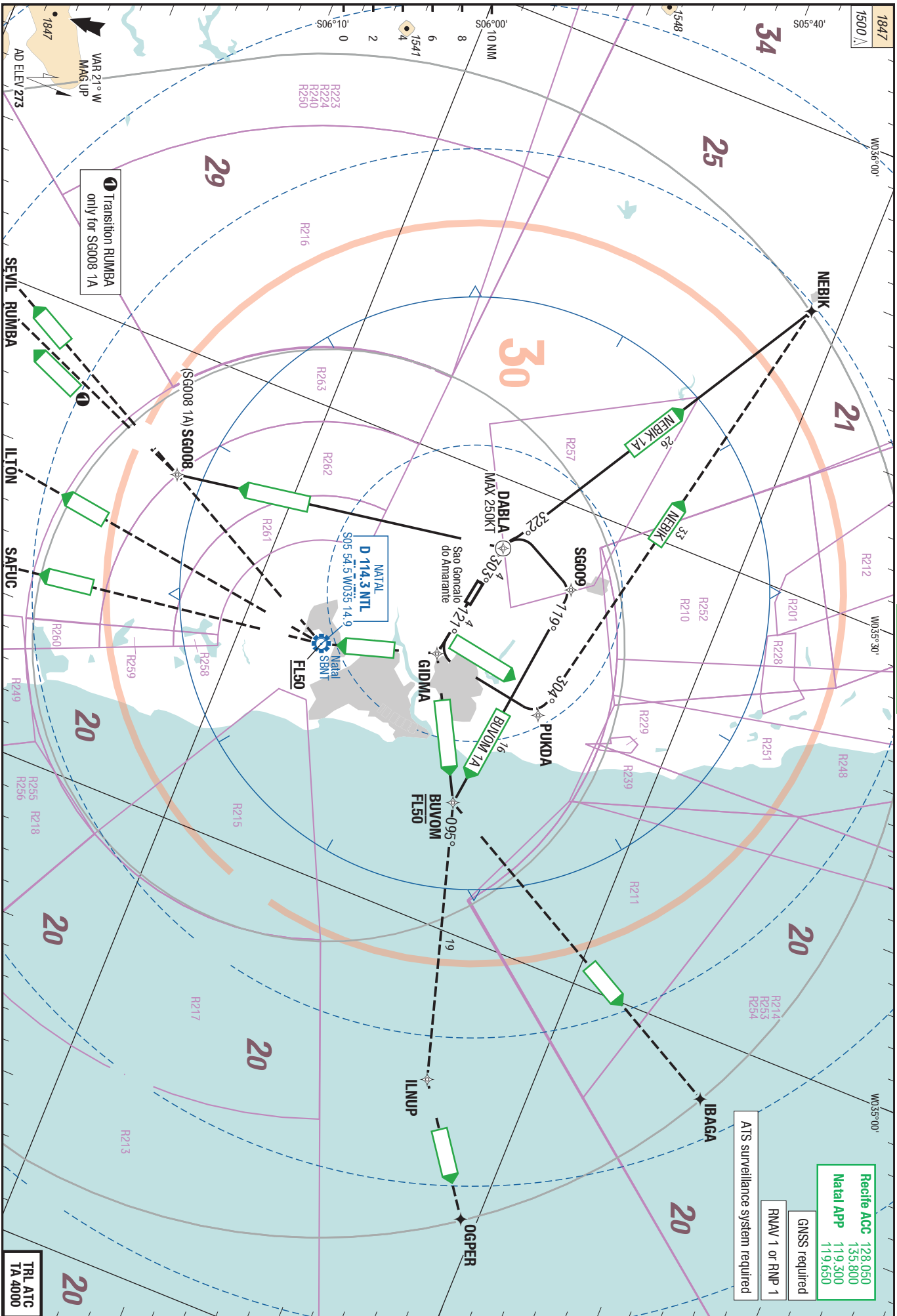
COORDINATES		
01A-01B	S05 45.9	W035 22.0
02A-02B	S05 45.9	W035 22.1
03A-03B	S05 45.9	W035 22.1
04A,04	S05 45.9	W035 22.2
04B	S05 45.9	W035 22.1
05A-05B	S05 45.9	W035 22.2
06A-06B	S05 45.9	W035 22.3
07A-07B	S05 45.9	W035 22.3
08-10	S05 45.9	W035 22.4
11	S05 45.8	W035 22.4
12A-12B	S05 45.8	W035 22.5

VAR 21° W  
MAG UP  
AD ELEV 273

Not to scale

SID

SID



以上内容仅为本文档的试下载部分，为可阅读页数的一半内容。如要下载或阅读全文，请访问：<https://d.book118.com/657131156015006143>