

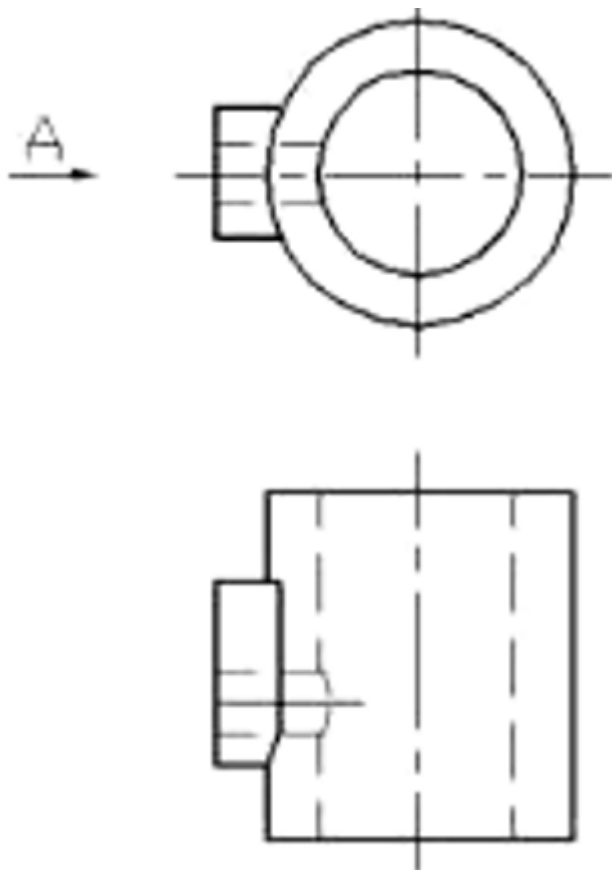
试题列表

单选题

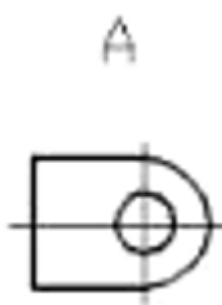
题型：单选题客观题分值 6 分难度：一般得分：6

1

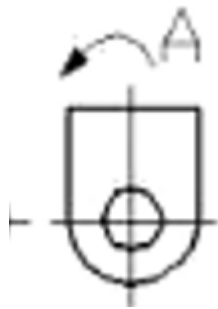
根据主俯视图，正确的局部视图是（ ）。



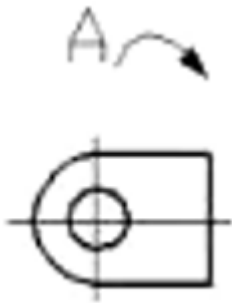
A



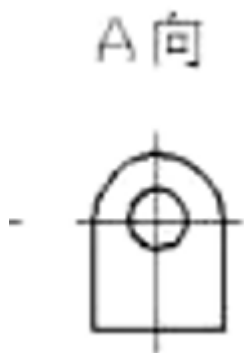
B



C



D



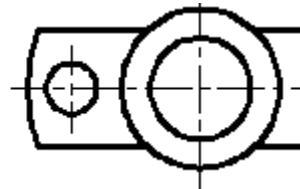
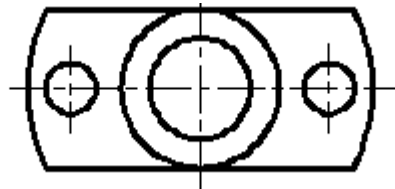
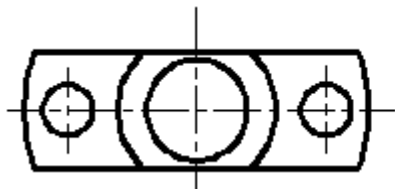
学生答案：A

老师点评：

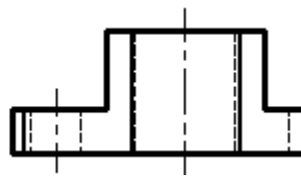
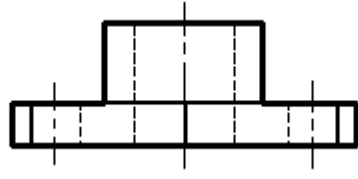
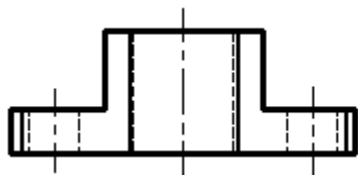
题型：单选题客观题分值 3 分难度：中等得分：3

2

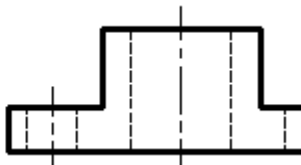
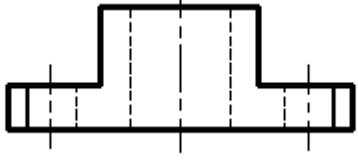
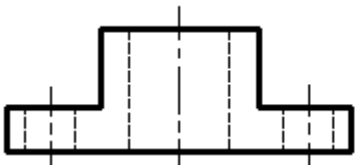
根据俯视图圆筒和圆柱的位置及且切割情况，选择正确的主视图。



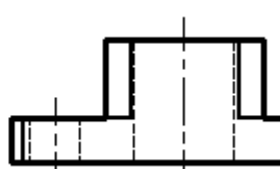
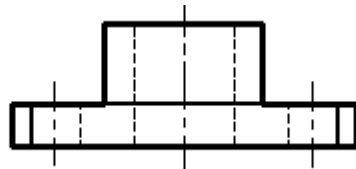
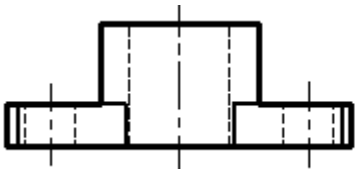
A



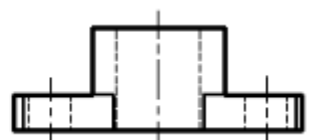
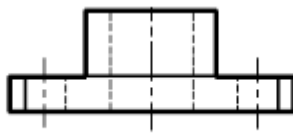
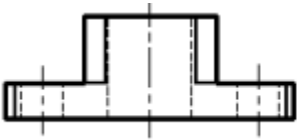
B



C



D



学生答案：D

老师点评：

题型：单选题客观题分值 6 分难度：一般得分：6

3

下列移出断面图中，正确的画法是（ ）。

以上内容仅为本文档的试下载部分，为可阅读页数的一半内容。

如要下载或阅读全文，请访问：

<https://d.book118.com/678104016011006114>