

# Triage Priorities in Trauma

---

---



# Introduction

- Telephone/Reception to Exam Room
- Be Prepared
  - Equipment Checklists
- Systems Priorities in Trauma
- Primary Survey
- Secondary Survey

# Telephone Triage

- First Contact
- Staff must be trained to assess
- Waiting Room
  - Reception needs to have queue's
  - What constitutes an emergency from something that can wait?
- Information
  - Keep client informed as to pets status
  - Staff needs to be comforting in times of stress

# Be Prepared

- Equipment and Crash Cart Items
- Daily Checks
- Staff Training and Simulation
- Minutes Count

# Systems Priorities in Trauma

- A,B,C,D's
  - Arterial Bleeding
  - Respiratory Systems
  - Cardiovascular System
  - Hemorrhage and Transfusion
  - Neurological System
  - Musculoskeletal System
  - Abdominal Injuries

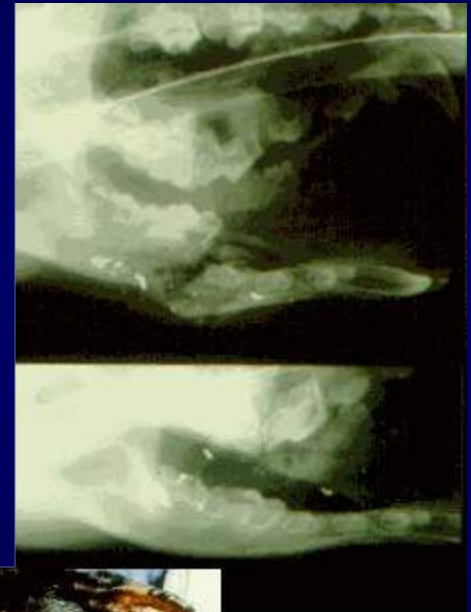
# Arterial Bleeding

- Spurting Bright Blood
- Often Patient Will Bleed to Death Before Contact
- Stop Quickly and Move on
  - Pressure
  - Clamp



# Respiratory System

- AIRWAY, AIRWAY, AIRWAY
  - Difficult?
  - Mandibular Fracture
  - Trachea/Laryngeal Injury
  - SQ Emphysema



# Respiratory System

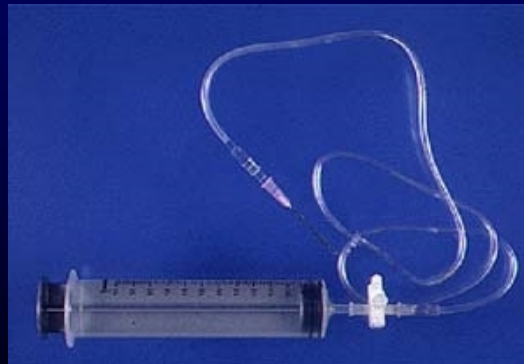
- Breathing
  - Respiratory Distress
  - Mucous Membrane Color
  - Does Body Position or Movement Effect
  - Penetrating Wound
  - Flail Chest
  - Breath Sounds





# Respiratory System

- Pneumothorax
  - Open
  - Closed
  - Tension
- Pulmonary Contusion
- Rib Fracture
  - Flail Chest
- Hemothorax
- Hydrothorax



# Circulation

- Evidence of On-going Hemorrhage
- Mucous Membrane Color and CRT
- Pulse Rate and Quality
- Heart Rate and Pulse Rate Matching
- Warmth of Extremities
- Distention or Collapse of Vessels
- Fluids!!!!!!!!!!

# Hemorrhage and Transfusion

- Increase in Blood Pressure May Increase Bleeding
- Crystalloids/Colloids
- Oxygen Carrying Capacity
- Anemia/Hemodilution
- Critical Blood Loss
- Transfusion
  - Whole Blood, Packed RBC's, or HBOC

# Transfusion Formula

- Blood Volume Approximately 90ml/kg
- 2.2 cc of whole blood per 1 kg /BW will raise HCT by approximately 1%
- 1ml/1# BW/ 1% (rule of ones)
- HBOC (Oxyglobin®) 10-30 ml/kg/day

以上内容仅为本文档的试下载部分，为可阅读页数的一半内容。如要下载或阅读全文，请访问：<https://d.book118.com/688047007134007003>