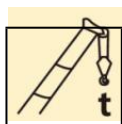


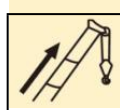
XCT80L5汽车起重机 / Truck Crane

技术规格书

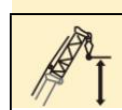
Technical specifications



80t



50.5m



75.5m





目录

Content

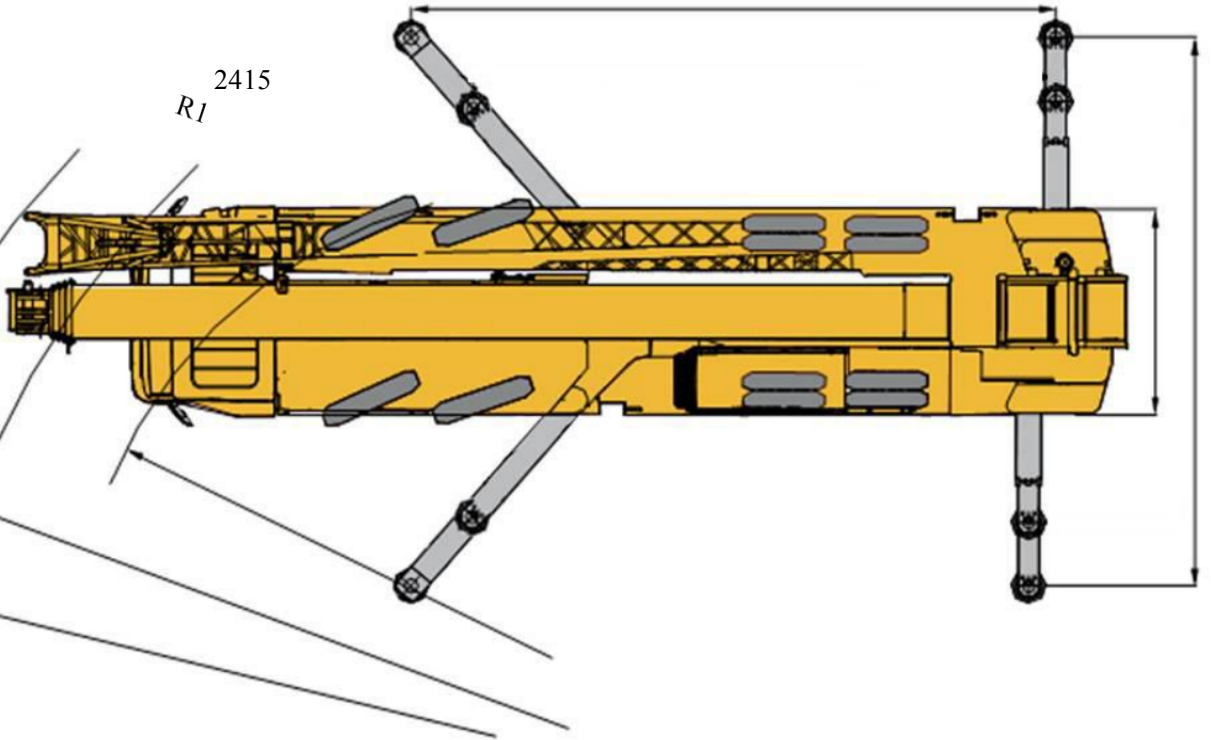
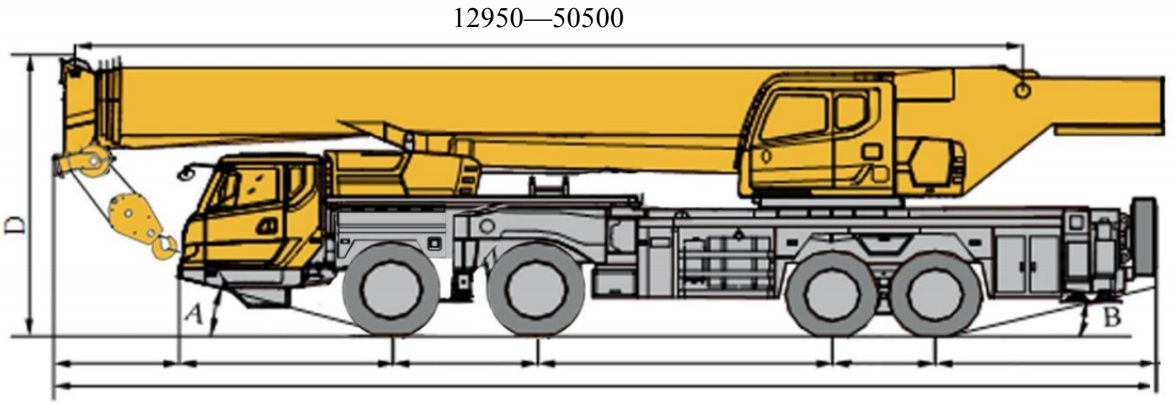
目录

Content

| | |
|------------------------------------|-------|
| 尺寸参数 Dimensions | 3 |
| 技术规格 Product Specifications | 4-6 |
| 重量/作业速度 Weight / Working speeds | 7 |
| 平衡重 Counterweight | 8 |
| 臂架组合方案 Boom / Jib combinations | 9-10 |
| 主臂 Boom | 11-14 |
| 副臂 Jib | 15-17 |
| 主臂加长节 Telescopic boom extension | 18-20 |
| 符号标识 Description of symbols | 21 |
| 主要技术参数表 Transportation plan | 22-23 |
| 注意事项 Notes | 24 |

XCMG—XCT80L5

尺寸参数 Dimensions



R2

2530
2000
4000
1350
2705

H

15000

R3

全
伸
支
腿
7
8
0

0

(
半
伸
支
腿
7
1
6
0
)

E

全伸支腿7900 (半伸支腿5900)





| | A | B | D | E | R1 | R2 | R3 | H |
|---------------|----|----|------|------|-------|-------|-------|-----|
| 12.00R24-20PR | 20 | 14 | 2000 | 2750 | 14050 | 14050 | 12000 | 200 |

技术规格

Technical specifications

|  底盘 | 配置 |
|---|--|
| 车架 | 徐工设计、制造，全覆盖式走台板，防扭转箱型结构，高强度钢材制造。 ● |
| 支腿 | 4支腿，K形布置，活动支腿采用双级水平支腿，水平伸缩和垂直伸缩由液压控制，底盘两侧装有电控操纵控制台，控制台板装有水平仪、照明灯和调速按钮，支腿油缸均设有单向阀，且垂直支腿带有双向液压锁。 ● |
| | 支脚盘尺寸：360×450mm ● |
| | 最大起重量时支腿反力：690KN ● |
| | MC11.40-60，直列六缸水冷电控柴油收动机，中国重汽制造，额定功率 ○ |
| | 297kW/1900rpm，最大扭矩1900Nm/1000-1400rpm，国VI排放标准。 |
| 变速箱 | 燃油箱容积：320L ● |
| 车桥 | 陕齿手动变速箱，10个前进档，2个倒档。 ● |
| 悬挂 | 名牌厂家高强度车桥，1、2桥转向，3、4桥驱动。 ● |
| 轮胎 | 前悬挂为钢板弹簧，后悬挂为橡胶悬挂。 ● |
| | 12个轮胎，1个备胎，1、2桥均装单胎，3、4桥均装双胎。轮胎规格：385/95R25（前车轮）。 ● |
| | 驻车制动：弹簧储能制动，作用于2、3、4 ● |
| | 辅助制动：收动机排气制动和缸内缓速制动。 |
| 转向 | 1、2桥机械转向+液压助力。 ● |
| 驾驶室 | 豪华驾驶室。配置大视野的前挡风安全玻璃、后视镜，电控洗涤器，电子门窗升降器，带有除霜风挡的室内空气加热器，收音机、丝网地垫等。副驾双座椅，可展开为简易卧铺。 ● |
| | 2公斤灭火器；标配冷暖空调。 ● |
| 电气系统 | 直流24伏特，串联12伏特的电池组2个。 ● |

|  上车 | 配置 |
|--|---|
| 结构 | 徐工设计、制造，高强度钢材制造。 ● |
| 液压系统 | 底盘收动机驱动变量柱塞泵，用于起升、变幅、伸缩。负载敏感式比例多路换向阀，带有抗冲击阀、防气蚀阀；风冷式液压油散热器； ● |
| | 液压油箱容积：1077L ● |
| 操纵方式 | 液控先导操纵系统，由左右2个操纵手柄控制，由液压泵和比例阀进行液压先导式控制起重机的全部动作 ● |
| 主起升机构 | 液压控制调速，装有双折线绳槽卷筒，由液压马达通过行星齿轮减速器驱动，内置常闭式制动器并带有平衡阀； ● |
| 回转机构 | 四点接触球式回转支承，由液压马达驱动行星齿轮回转机构减速器驱动，可连续回转360°；具有动力控制戒自由回转的功能，可无级调速；回转杆设有鸣响开关； ● |
| 变幅机构 | 单支双作用前置液压变幅油缸，带有平衡阀 ● |
| 操纵室 | 新型钢制操纵室，装有无视野死角的前景窗，安全玻璃，车窗装有遮阳板，推拉式车门，电加热座椅靠背可倾斜定位，操纵杆安装在座椅两侧的扶手台上；带推拉踏板；前窗顶窗装有雨刮器；标配单冷空调； ● |
| 安全装置 | 防后倾平衡阀、防后倾溢流阀、防后倾溢流阀 ● |

|  臂架系统 | 配置 |
|--|---|
| 主臂 | 5节，“U”形截面的筒形焊接结构。双缸绳排伸缩机构 ● |
| 臂端单滑轮 | 单滑轮，安装在主臂顶端用于单股钢丝绳起重作业，起重性能不主臂相同，但最大起重量不超过6.5t。 ● |
| 固定副臂 | 2节桁架式焊接结构，具有0°、15°、30°三种固定副臂安装角 ● |
| | 固定副臂长度：10.5m/17.5m ○ |
| 主臂加长节 | 桁架式焊接结构，9m。 ○ |

产品各部件明细如上所述，具体部件明细请

参照产品报价单
符号说明：


● —— 表示标准配置；


○ —— 表示选装配置。


XCMG——XCT80L5

技术规格

Technical specifications

|  Chassis | Configuration |
|--|---|
| Frame | Designed and manufactured by XCMG, it is made of high strength steel with fully covered walking surface and anti-torsion box-typed structure. ● |
| Outriggers | Four outriggers arranged in K-shape are hydraulically controlled by control levers. Double-stage outrigger beam is adopted. There is an outrigger control station located at each side of the chassis, and there is a level gauge, an illuminator and two speed buttons on each control station. There is a check valve fitted in each outrigger cylinder, and a double-way hydraulic valve fitted in each jack cylinder. ● |
| Engine | <p>Float dimension: 360×450mm Reaction force of outrigger at max. lifting load.....690KN ●</p> <p>MC11.40-50、MC11.40-60, in-line, 6-cylinder, water cooled, electric control diesel engine, made by SINOTRUK, with rated power of 297kW/1900rpm and max. torque of 1900Nm/1000-1400rpm, compliant to China Vand China VI emission standard. ●</p> <p>Fuel tank capacity: 320L. ●</p> |
| Transmission | Mechanical transmission, made by Shaanxi Fast Gear Co., Ltd., 10-forward speed and 2-reverse speed. ● |
| Axes | High strength axles, made by famous manufacturers. 1st and 2nd axes are for steering, and 3rd and 4th axes are for driving. ● |
| Suspension | Leaf spring suspension is used as |

|  Chassis | Configuration |
|---|--|
| Braking | <p>Service brake: double-circuit air pressure brake acting on all wheels. ●</p> <p>Parking brake: spring-loaded brake, acting on the wheels of axles 2, 3 and 4. ●</p> |
| Steering | Auxiliary brake: engine exhaust brake and engine retarder brake. ● |
| Driver's cab | <p>Mechanical steering mechanism with a hydraulic booster for 1st and 2nd axles. ●</p> <p>Luxurious driver's cab. Windshield with wide visual field, rearview mirror, electric wiper-washer, electrically operated window glass lifter, air heater with defrosting function, radio player and new floor mat, etc. are provided for the driver's cab. A double-seat ●</p> |
| Electrical system | designed for the co-driver maybe used as a berth forrest ● |

|  Superstructure | Configuration |
|--|--|
| Frame | Designed and manufactured by XCMG, made of high strength steel. ● |
| Hydraulic | Variable pump driven by chassis engine, used for hoisting, elevating and telescoping operations. Load sensing proportional multi-way change valve with impact resistance valve and cavitation-proofvalve ● |
| Slewing system | <p>integrated; air-cooled hydraulic oil radiator. ●</p> <p>Tank capacity: 1077L</p> <p>Four-point contact-ball slewing ring is driven by the planetary gear reducer of slewing mechanism, which is driven by a hydraulic motor and may continuously slew ●</p> |

以上内容仅为本文档的试下载部分，为可阅读页数的一半内容。如要下载或阅读全文，请访问：<https://d.book118.com/807060055123010001>