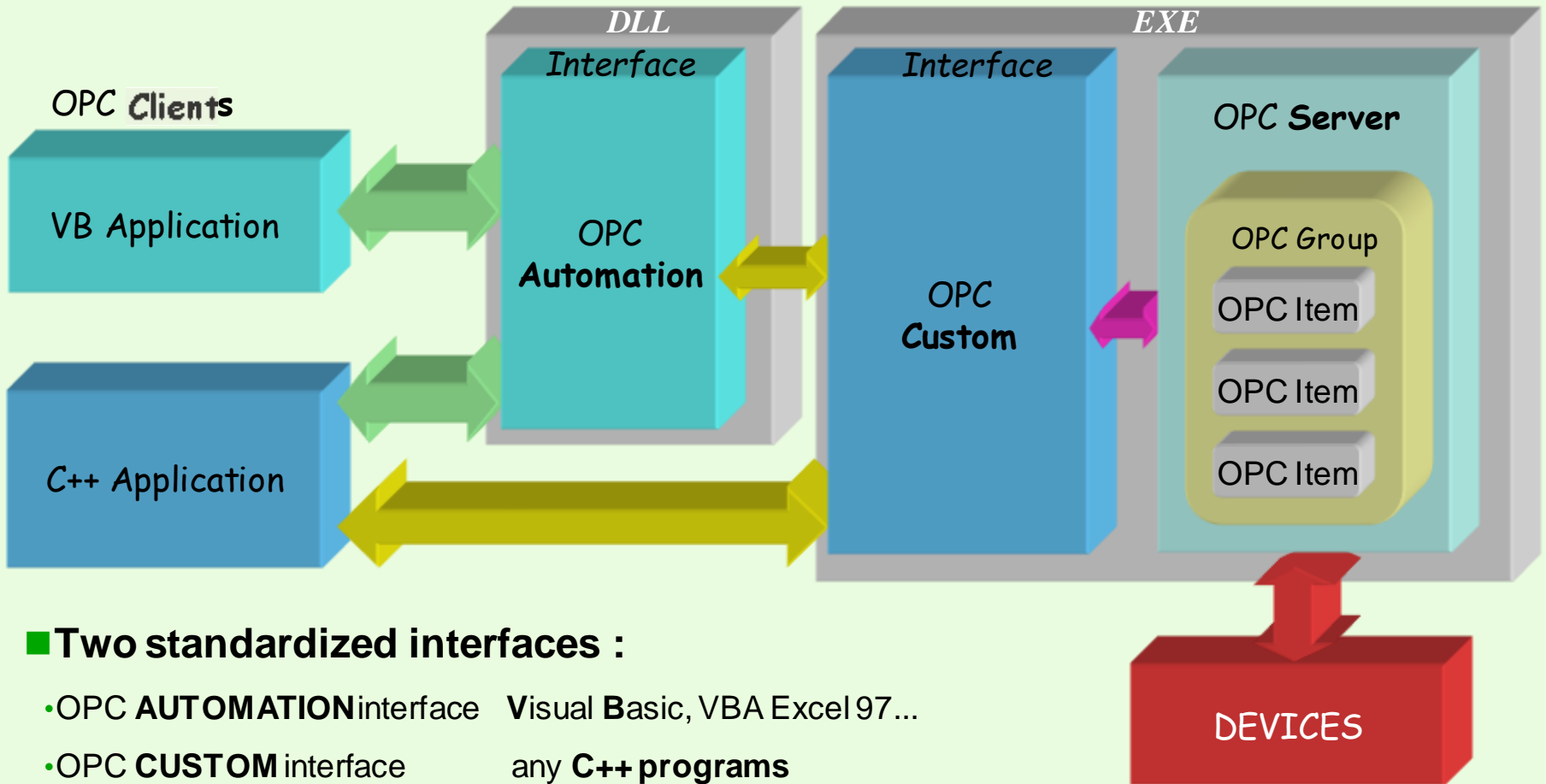


OPC: Standard Server Architecture



■ Two standardized interfaces :

- **OPC AUTOMATION** interface Visual Basic, VBA Excel 97...
- **OPC CUSTOM** interface any **C++** programs

■ **Part 1 : OPC**

■ **Part 2 : OFS**

■ **Part 3 : Features**

Part 2: OFS

- OPC Factory Server : the Schneider Automation **OPC** Server.
- Connection to Schneider Automation PLCs via the **MODBUS** and **XWAY UNI-TE** communication protocols.
- Openness to many clients for off the shelf and custom applications via OPC Automation and OPC Custom Interfaces.
- Connection to third party products
 - ✧ HMI / SCADA : Monitor Pro, US Data, Intellution, Wonderware
 - ✧ MES / ERP
 - ✧ Standards tools: Visual Basic, [VBA](#), C++, Excel, Access, SQL-server, Web (HTML)

Characteristics

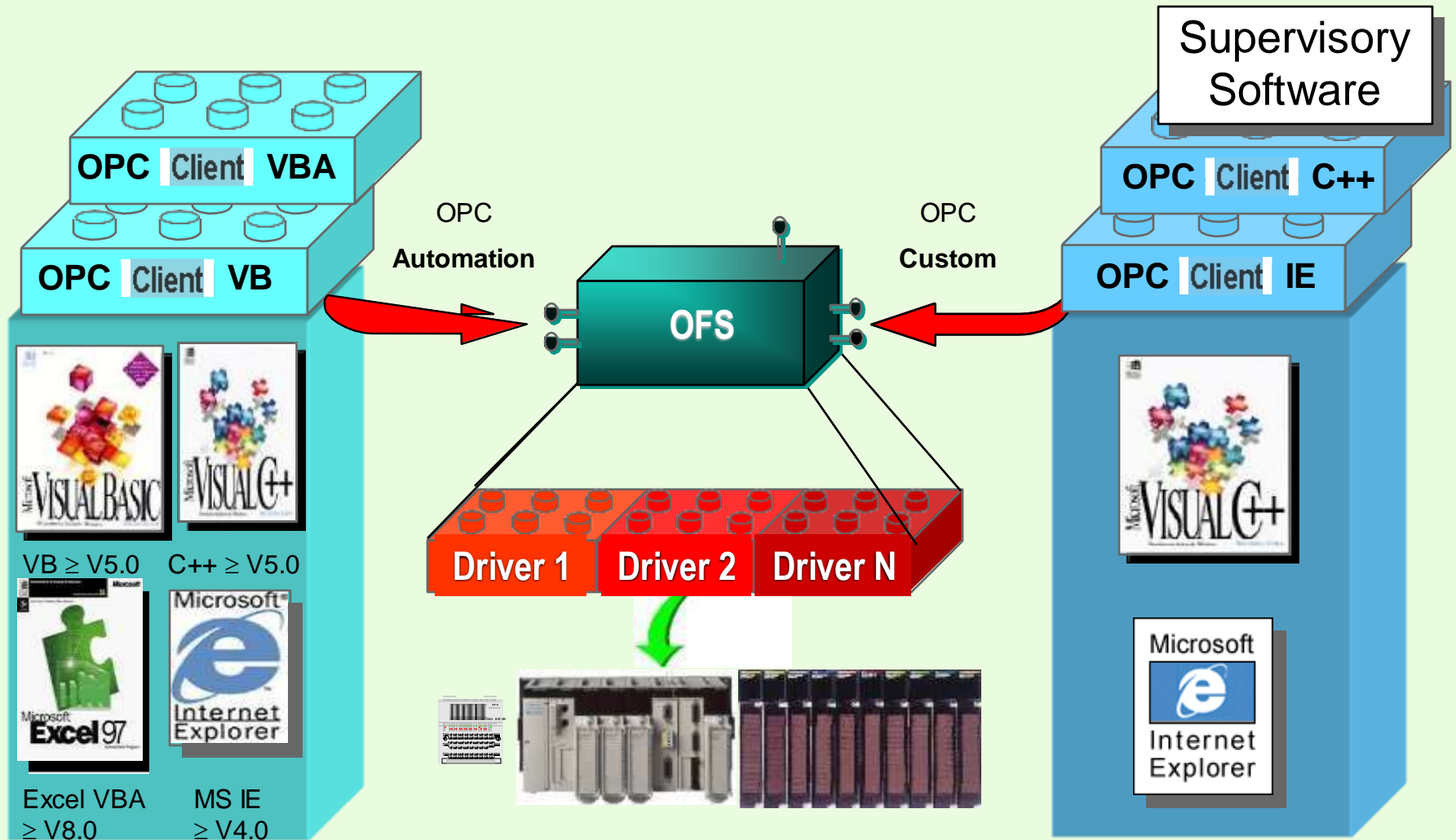


- **Compliant** with the **OPC** standard V 2.01
- Interfaces **OPC Automation, OPC Custom** (including Browser)
- **Local** or **Remote** Server access.
- **Multi PLC** (Quantum, Premium, Micro, Momentum, S7, S1000...).
- **Multi Communication Protocols** (Modbus and Uni-TE).
 - Modbus TCP/IP, Modbus RTU, Modbus+
 - XWAY TCPIP, Unitelway, Fipway, Ethway, Isaway
- **Multi Clients.**
- **Address** and **Symbol** variable access.

Services

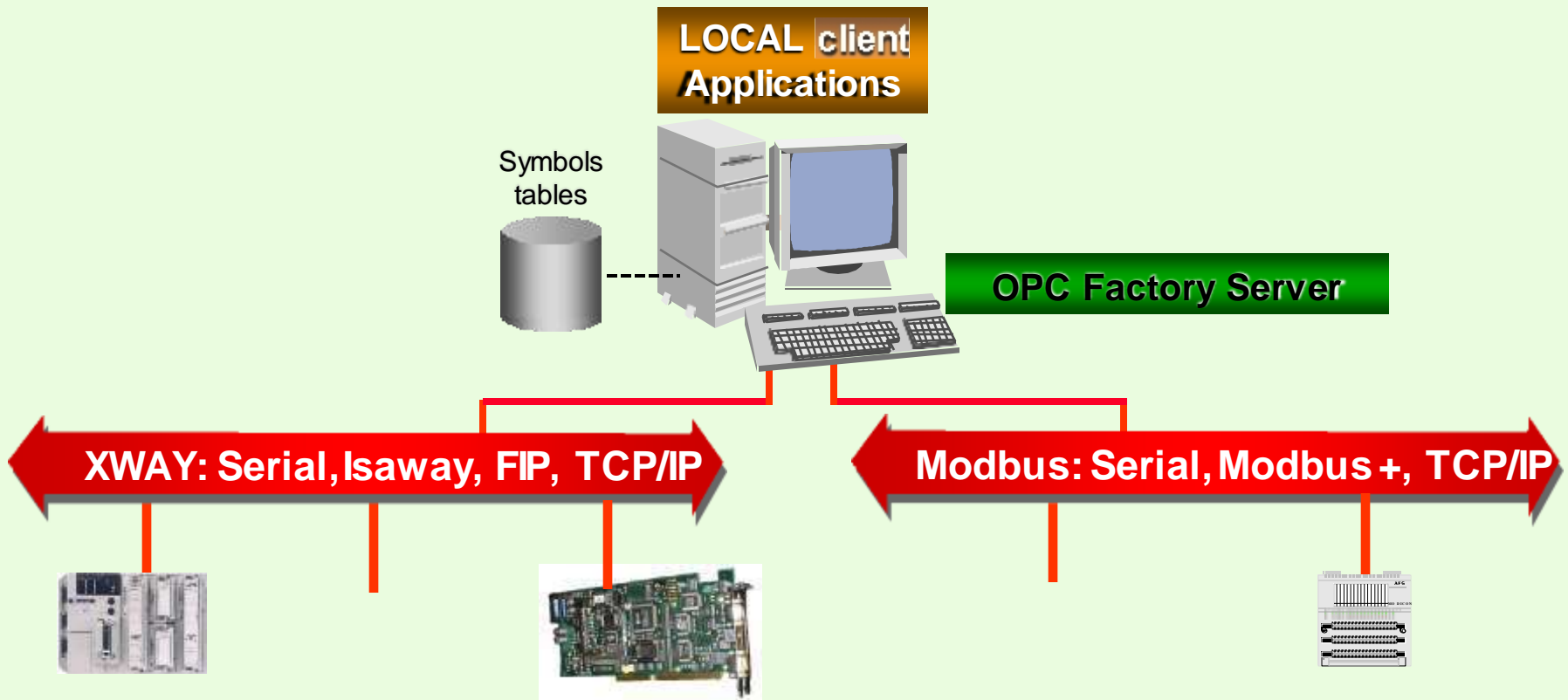
- **Read/Write** device variables
 - **Synchronous** or **Asynchronous** Multi-PLC communication
 - **Update rate** for server **NOTIFICATION**
 - **Deadbanding** for Float variables
- **Symbolic access** to PLC variables via **exported symbols files**
from Concept, Modsoft, PL7, Taylor or CSV format
- **Direct** access to the **Concept symbols database**
 - Symbolic access
 - Located/unlocated variables
 - Simple or structured variables
- **Browse** interface **for symbol databases**
Provide ergonomic access to PLC variables

Multi clients



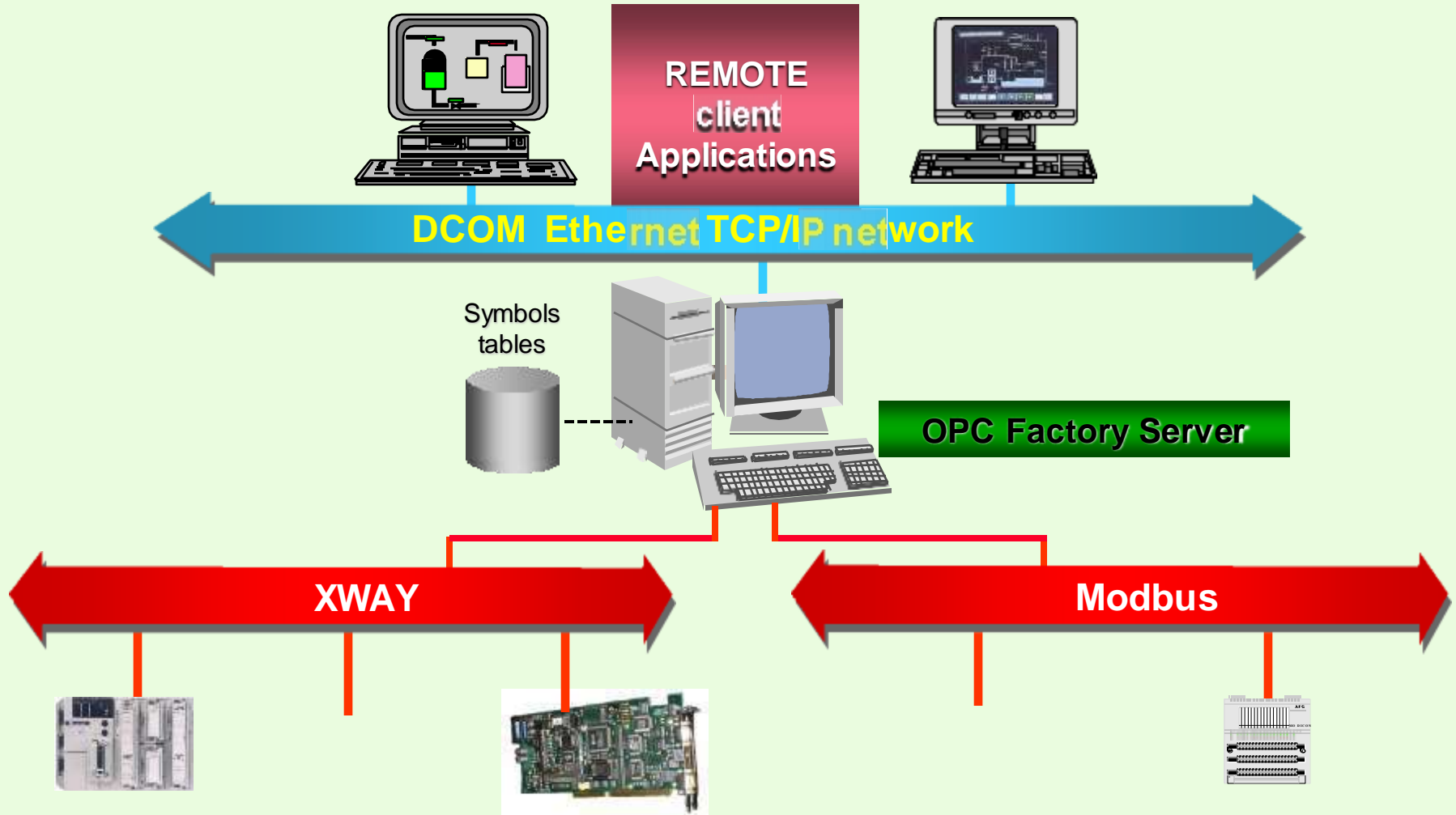
Local Architecture

- Local Access : the client application(s) and the OPC Factory Server are located on the same station



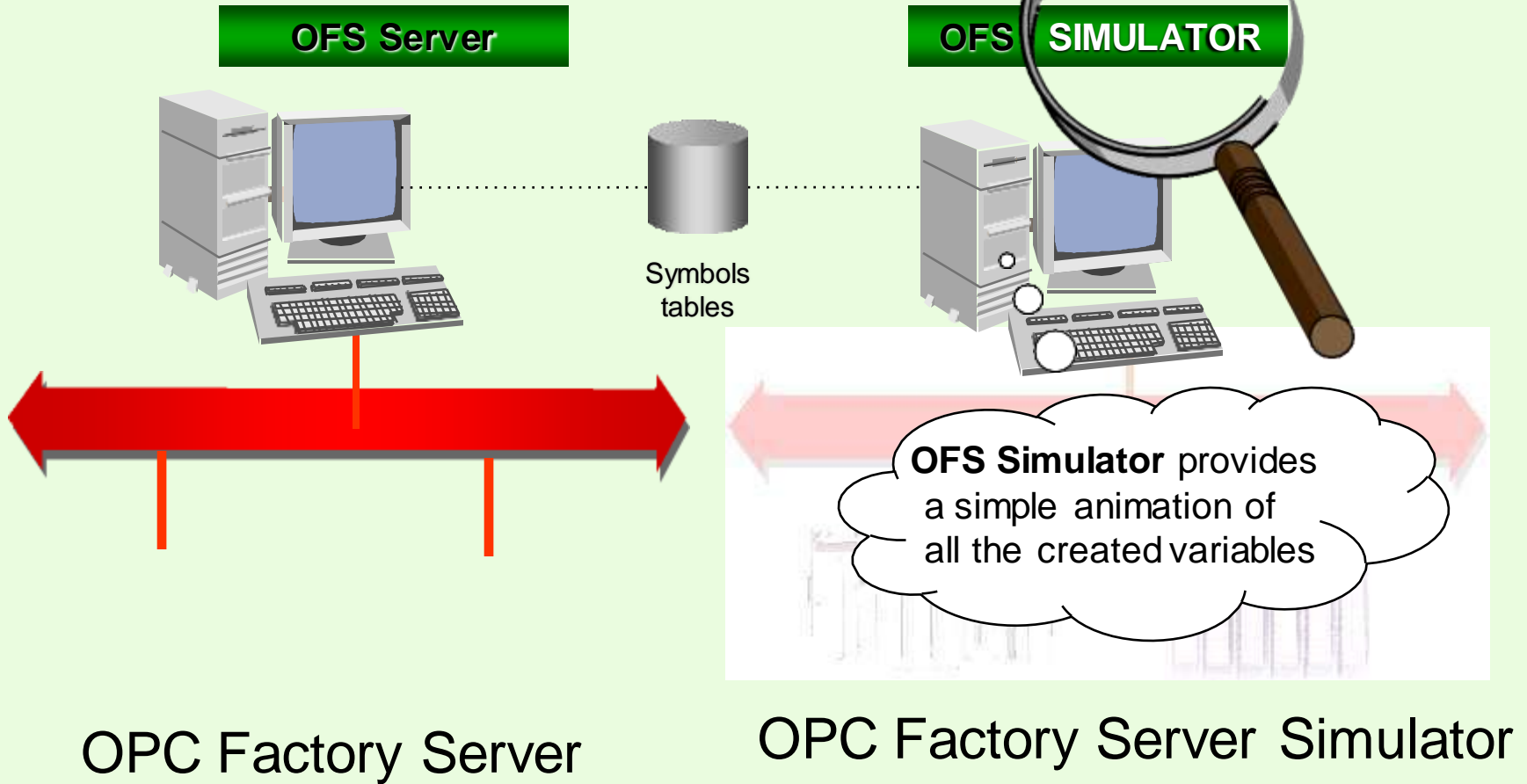
Distributed Architecture

- Remote Access : Client Applications and the OPC Factory Server are located on different stations connected through TCP/IP



Simulator

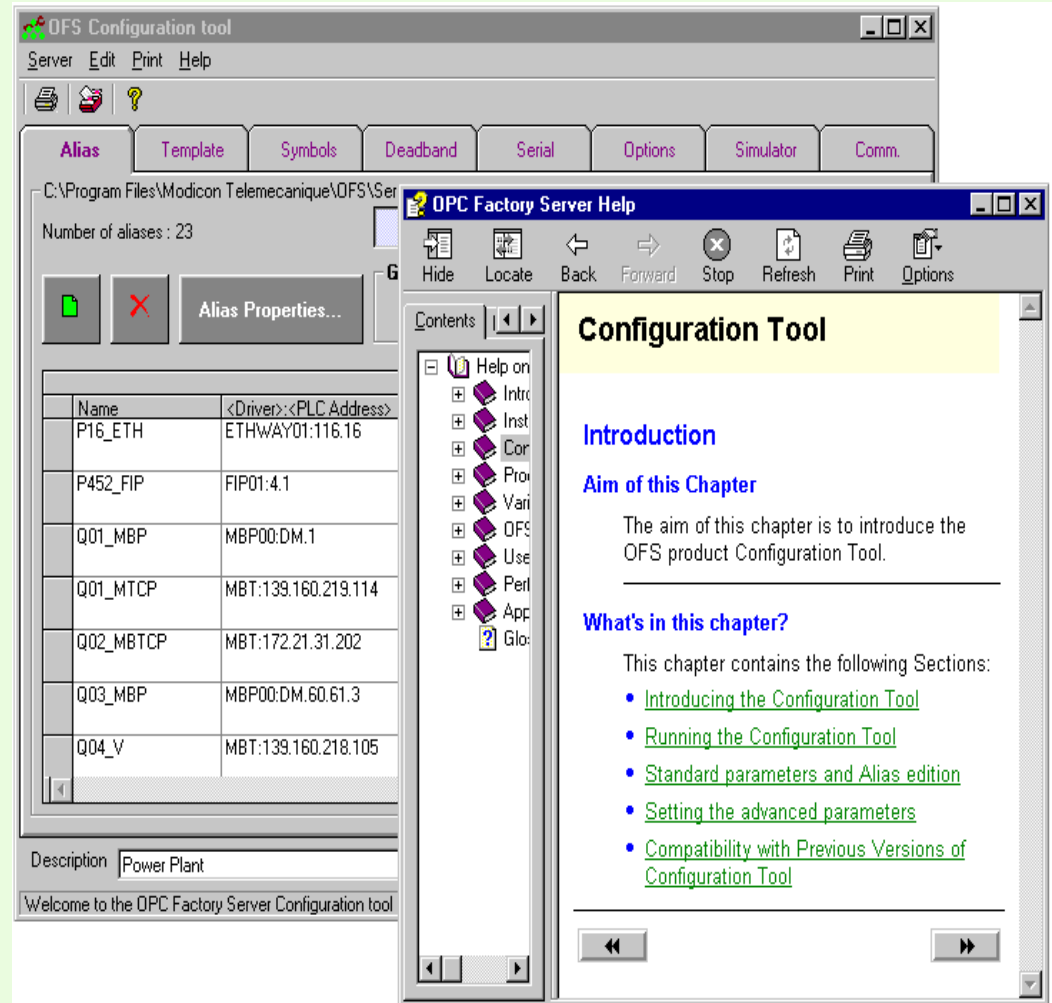
- Allow local or remote client application testing without any physical devices



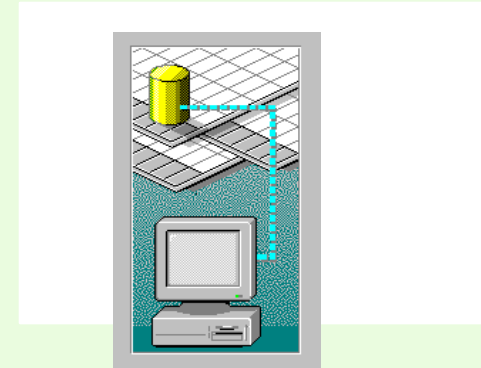
Configuration tool

• Tool for all the off-line configuration of the OPC Factory Server

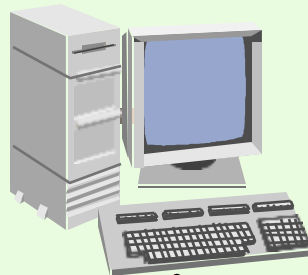
- Enable/disable debug interface and log files.
- Definition of files extensions for all symbol tables files.
- Device declaration (Name, Network address, Symbols file).
- Deadbanding configuration.
- Simulator Configuration.



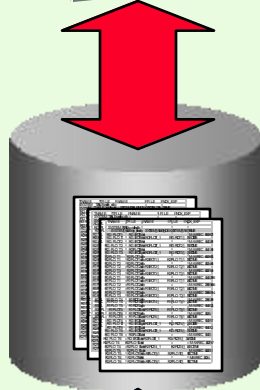
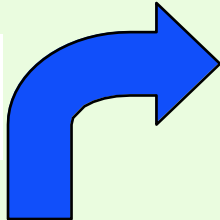
Symbols Table files



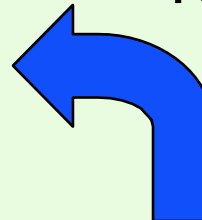
Server



PL7



ConConcept
Modsoft
Taylor



Export Symbols files **.SCY**
Exported Application **.FEF**



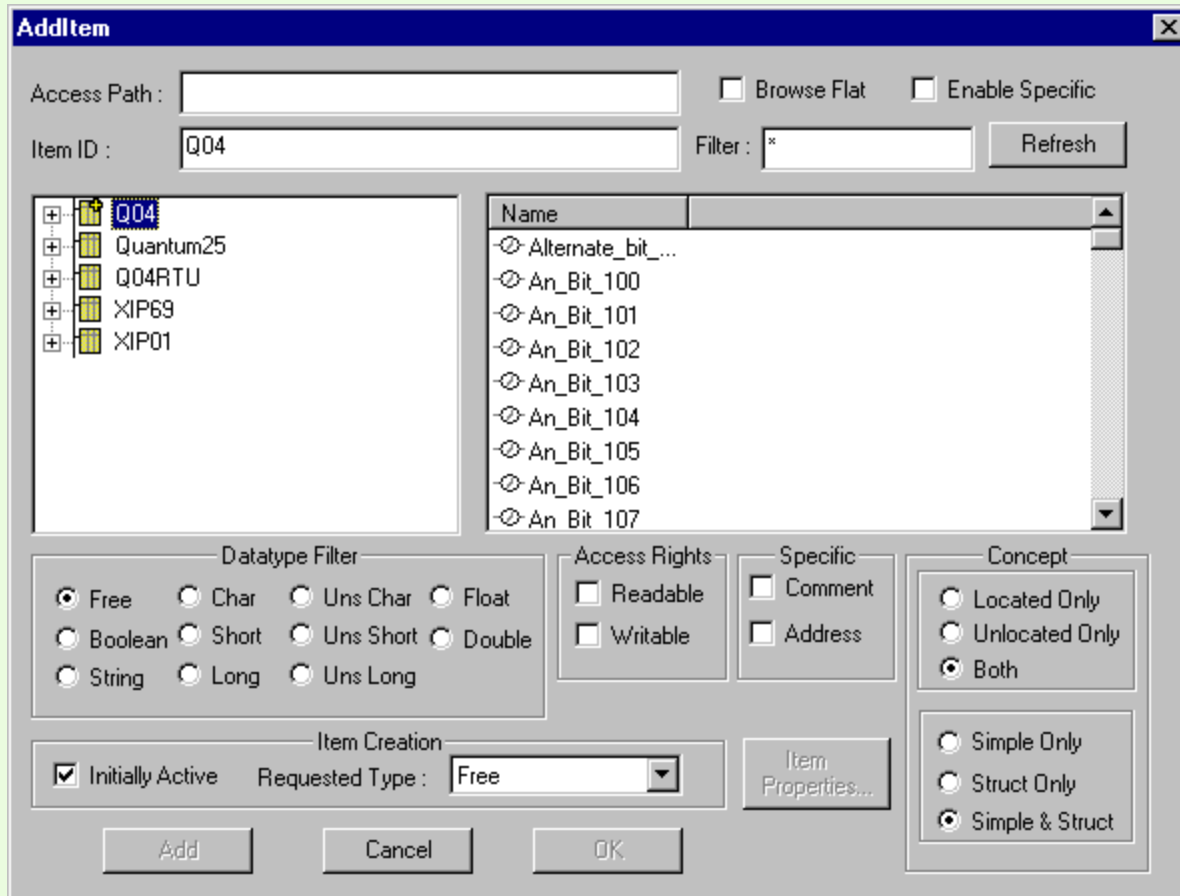
Delimited ASCII
.CSV

ConConcept exported files **.CCN**
ConConcept project files **.PRJ**
Modsoft exported files **.TXT**
Taylor exported files **.FIS**

Symbols Databases

- **Symbol Databases management by OFS**
 - Read exported symbols databases
 - Link with the PLC symbols databases
- **Consistency detection between Files & PLCs**
 - If something is different, there are 3 options :
 - ⇒ reject the connection
 - ⇒ set connection **READ-ONLY**
 - ⇒ warning message

OPC Browse interface : direct symbols access



OPC Browser

- **Multi level Hierarchy**
 - For each node, show all the symbols that can be used to create an OPC item
- **Filtering capabilities:**
 - By name (ex: Temp*)
 - By variabletype (bits, words, floats, string...)
 - By accessrights (read, write)
- **Compliant with OPC standard**

以上内容仅为本文档的试下载部分，为可阅读页数的一半内容。如要下载或阅读全文，请访问：<https://d.book118.com/838114110076006046>