

General Info

Nanchang, CHN

N 28°51.9' E 115°54.0' Mag Var: 3.3°

Elevation: 143'

Public, Control Tower, IFR, Landing Fee, Customs

Time Zone Info: GMT+8:00 no DST

Runway Info

Runway 03-21 9186' x 148' concrete

Runway 03 (26.0°) TDZE 121'

Lights: Edge, ALS, Centerline

Runway 21 (206.0°) TDZE 141'

Lights: Edge, ALS, Centerline

Right Traffic

Communications Info

ATIS 128.4

Nanchang Tower 130.0 Secondary

Nanchang Tower 118.65

Nanchang Ground Control 121.7

Notebook Info

/KHN
GBEI

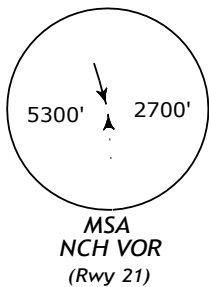
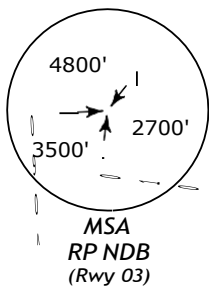
JEPPESEN
3 SEP 04 10-2

NANCHANG, PR OF CHINA
.STAR.

ATIS
128.4

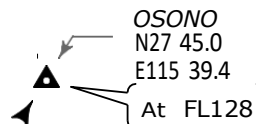
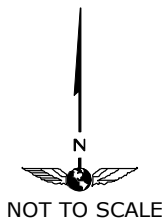
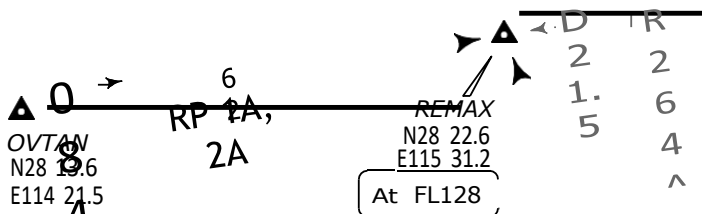
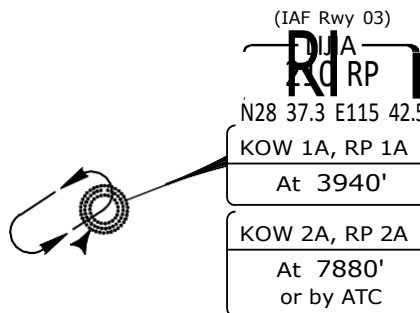
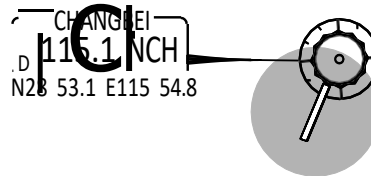
Apt Elev
143'

Alt Set: hPa
Trans level: FL118 Trans alt: 9850'
10830' - QNH 1031 hPa or above
8860' - QNH 979 hPa or below
Initial approach MAX 205 KT.



KOW 1A
RP 1A
RWY 03 ARRIVALS

KOW 2A
RP 2A
RWY 21 ARRIVALS



KOW
* N25 49.3 E114 54.9

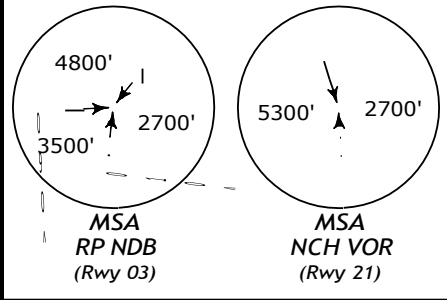
FL CONVERSION	
FL128	FL3900m
FL118	FL3600m

FT/METER CONVERSION	
QNH	
10830'	- 3300m
9850'	- 3000m
8860'	- 2700m
7880'	- 2400m
4930'	- 1500m
3940'	- 1200m

/KHN
GBEI

JEPPESEN
3 SEP 04 10-3

NANCHANG, PR OF CHINA
.SID.

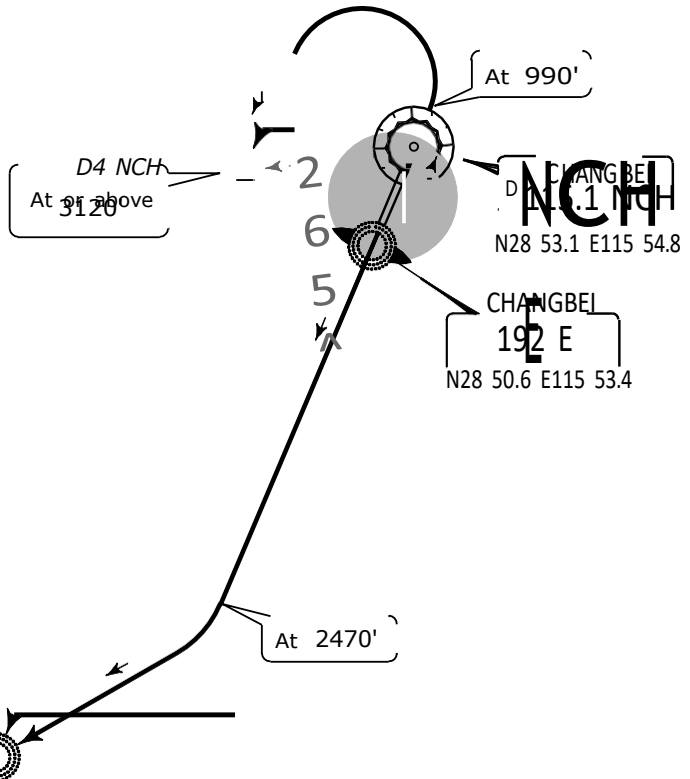


Apt Elev
143'

Trans level: FL118
Trans alt: 9850'
10830' - QNH 1031 hPa or above
8860' - QNH 979 hPa or below
Turn speed MAX 200 KT.

KOW 11D
RP 11D
RWY 03 DEPARTURES

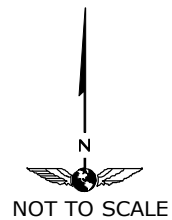
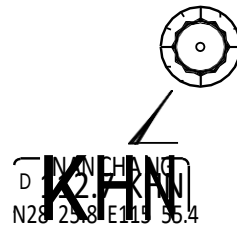
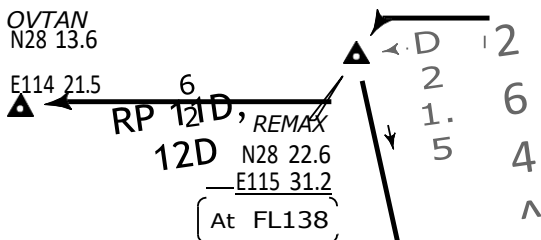
KOW 12D
RP 12D
RWY 21 DEPARTURES



RP 11D
N28 37.3 E115 42.5

KOW 11D, RP 11D
At 7880'
or by ATC

KOW 12D, RP 12D
At 3940'



NOT TO SCALE

KOW
N25 49.3 E114 54.9

OSONO
N27 45.0
E115 39.4
At FL138

FT/METER CONVERSION

QNH

990'	-	300m
2470'	-	750m
3120'	-	950m
3940'	-	1200m
7880'	-	2400m
8860'	-	2700m
9850'	-	3000m
10830'	-	3300m

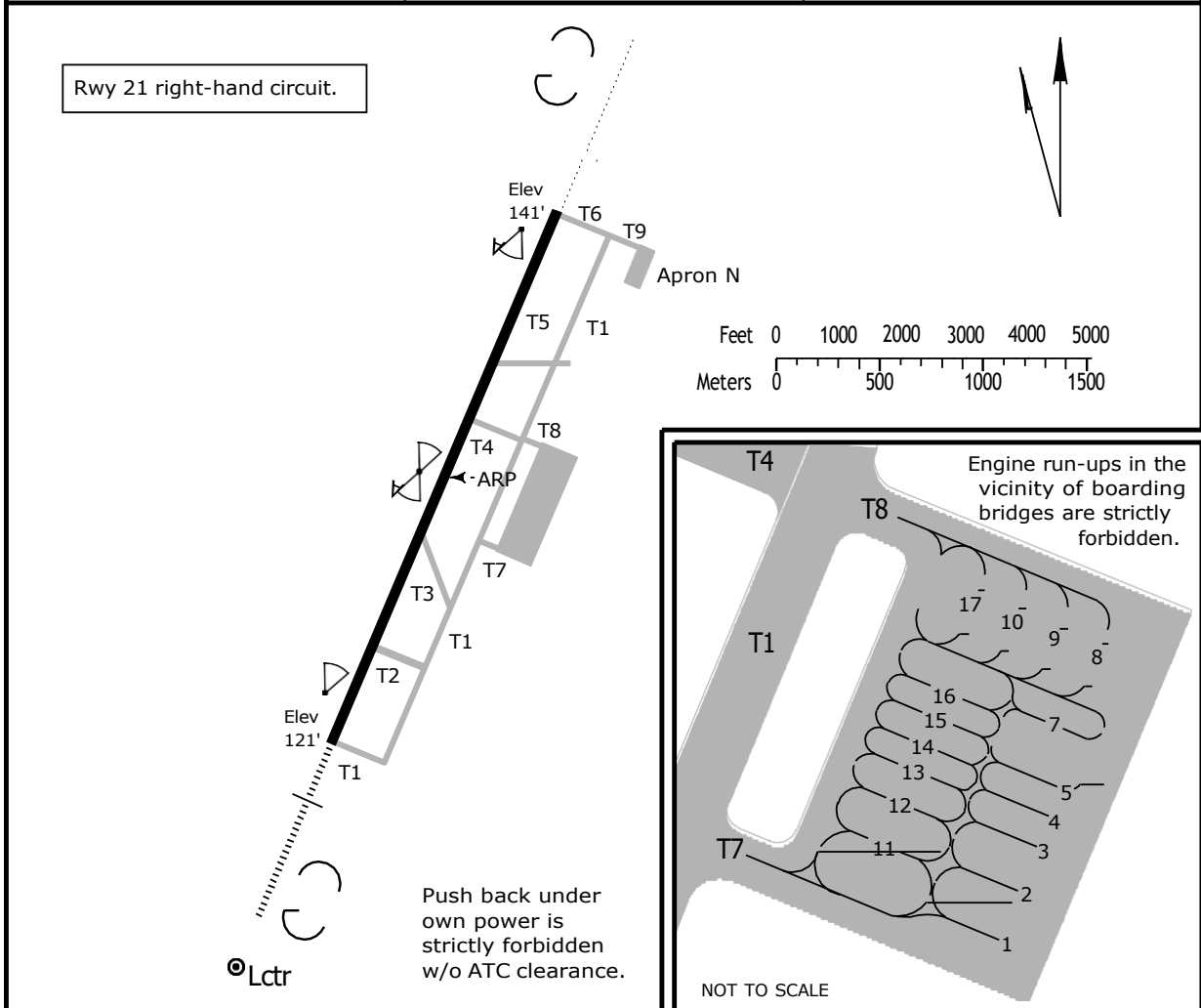
FL CONVERSION

FL118	FL3600m
FL138	FL4200m

/KHN
Apt Elev **143**
N28 51.9 E115 54.0

JEPPESEN NANCHANG, PR OF CHINA
29 SEP 06 **(10-9)**
CHANGBEI

ATIS 128.4	NANCHANG Ground 121.7	Tower 118.65
---------------	--------------------------	-----------------



ADDITIONAL RUNWAY INFORMATION
USABLE LENGTHS
— LANDING BEYOND —

RWY	Threshold	Glide Slope	TAKE-OFF	WIDTH
03	HIRL(60m) CL(30m) HIALS SFL PAPI-L(3.0^) RVR	8123' 2476m		148'
21	HIRL(60m) CL(30m) HIALS PAPI-L(3.0^) RVR	8196' 2498m		45m

	TAKE-OFF All Rwys	
RL		NIL (DAY only)
2 TURB Eng or 3 & 4 Eng	RVR 400m	RVR 500m
Other	VIS 1600m	

/KHN
CHANGBEI

JEPPESEN
3 SEP 04 (11-1)

NANCHANG, PR OF CHINA
ILS DME Rwy 03

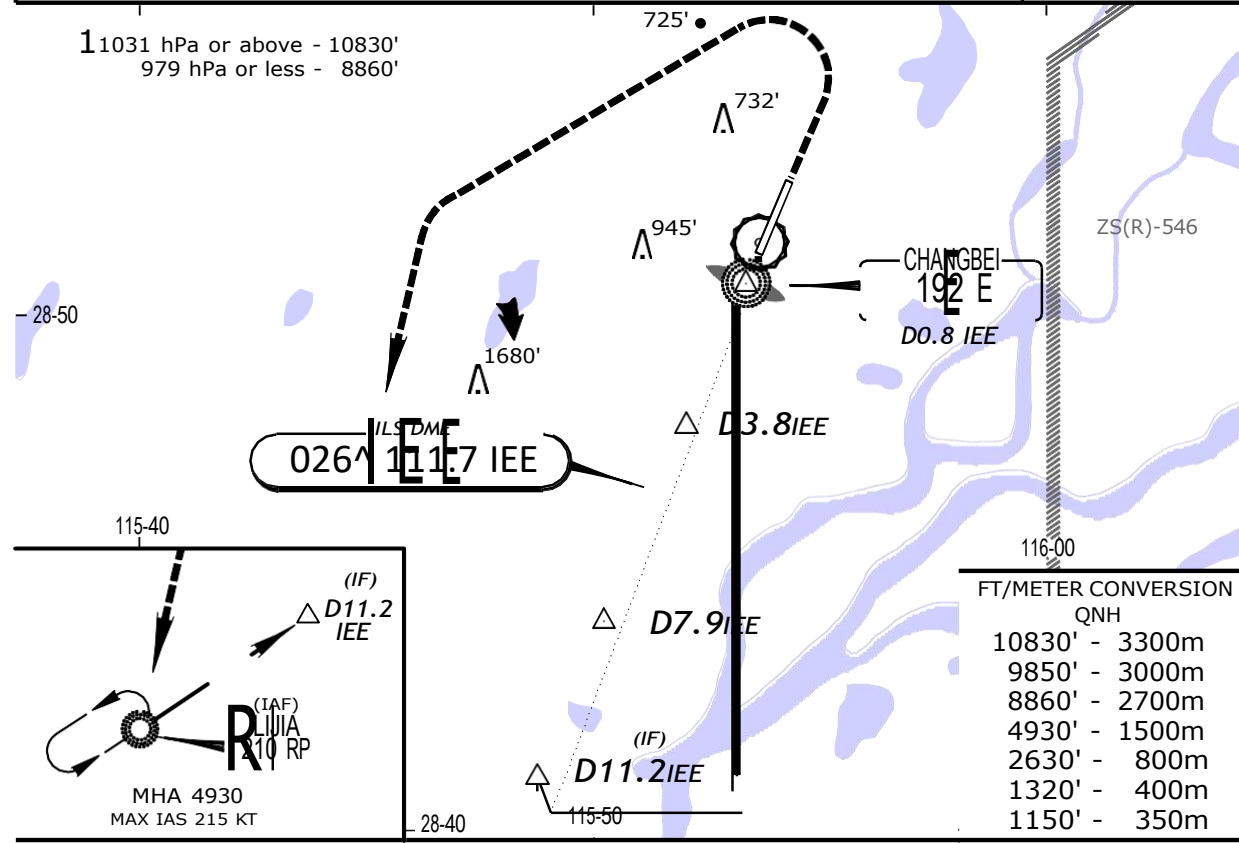
ATIS	NANCHANG Tower			Ground
128.4	118.65			121.7
LOC IEE	Final Apch Crs	GS D3.8 IEE	ILS DA(H) Refer to Minimums	Apt Elev 143'
111.7	026^	1312' (1191')		RWY 121'

MISSED APCH: Climb STRAIGHT AHEAD to 1150', then climbing turn LEFT to 4930'. Intercept and follow 196^ to RP NDB at 4930'. MAX IAS 205 KT.

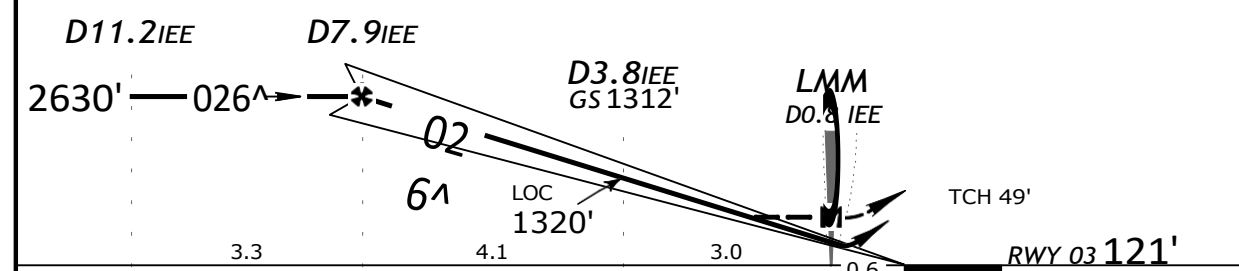
Alt Set: hPa Rwy Elev: 4 hPa Trans level: FL 118 Trans alt: 9850' 1

Initial approach restricted to MAX IAS 205 KT.

MSA
RP NDB



LOC	IEE DME	8.0	7.0	6.0	5.0	4.0	3.0	2.0	1.0
(GS out)	ALTITUDE	2660'	2340'	2020'	1700'	1380'	1060'	750'	430'



Gnd speed-Kts	70	90	100	120	140	160	<p>205 KT 1150' MAX</p>
ILS GS 3.00^ or	377	484	538	646	753	861	
LOC Descent Gradient 5.2%							

MAP at LMM/DO.8 IEE

STRAIGHT-IN LANDING RWY 03				CIRCLE-TO-LAND	
ILS		LOC (GS out)		Not authorized East of rwy	
DA(H) AB: 321' (200') CD: 335' (214')		MDA(H) 530' (409')			
FULL		ALS out		Max Kts	MDA(H)
A		RVR 720m VIS 800m	RVR 1500m VIS 1600m	100	1320' (1177') 2000m
B				135	1320' (1177') 2400m
C	RVR 720m VIS 800m	1200m	1200m	180	2070' (1927') 4800m
D			RVR 1500m VIS 1600m	205	

PANS OPS 4

/KHN
CHANGBEI

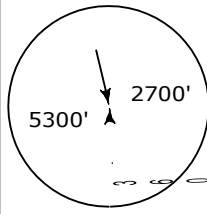
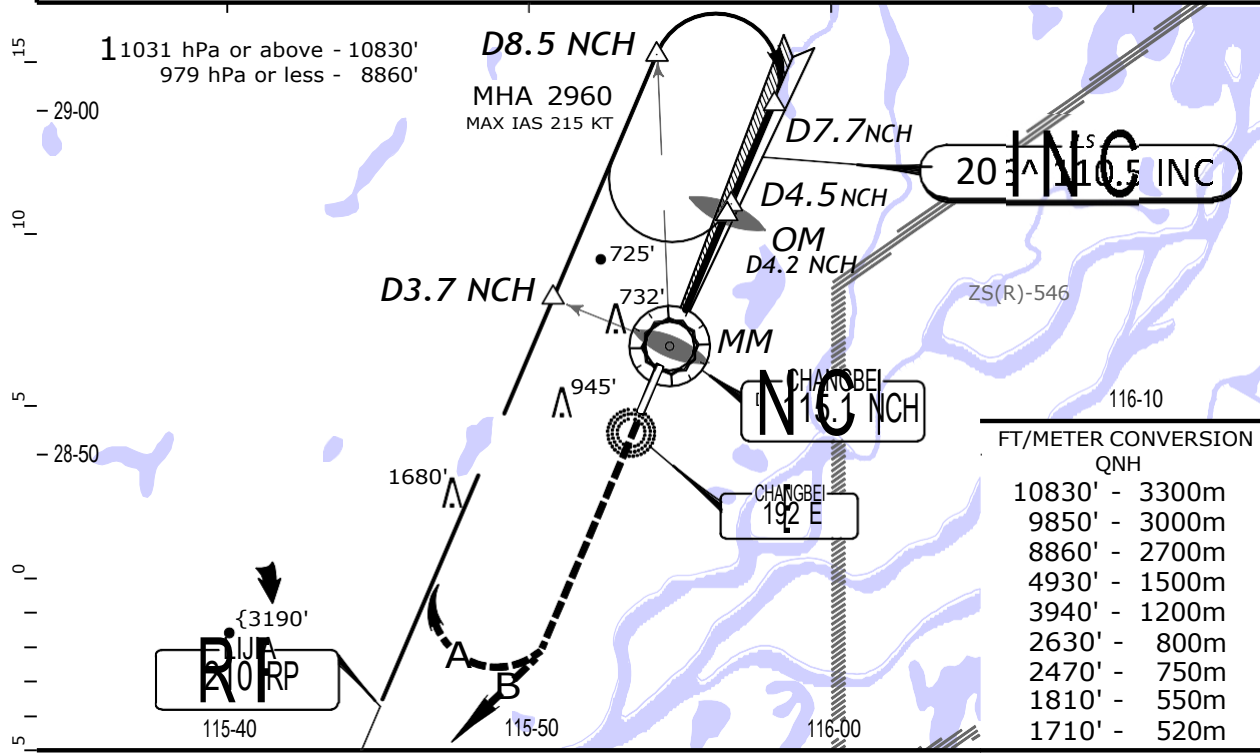
JEPPESEN
3 SEP 04 **(11-2)**

NANCHANG, PR OF CHINA
ILS DME Rwy 21

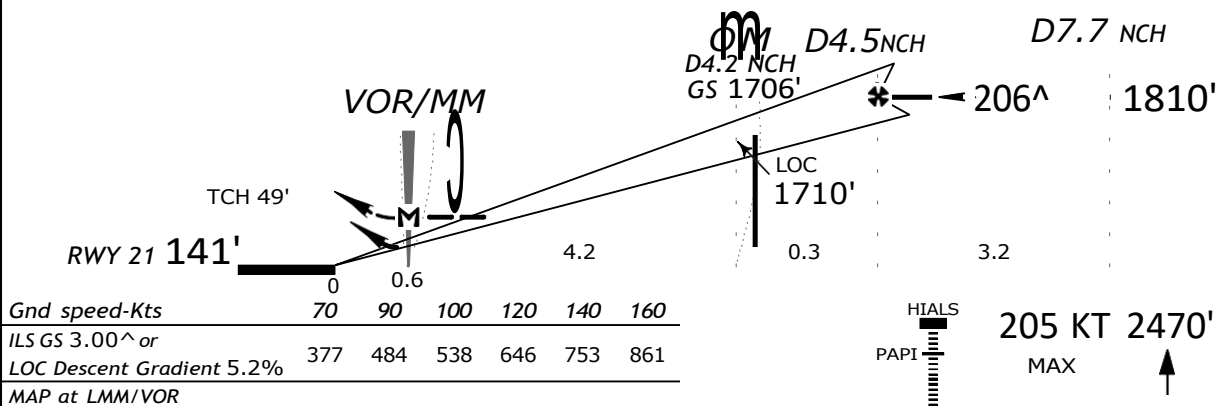
BRIEFING STRIP™	ATIS	NANCHANG Tower			Ground
	128.4	118.65			121.7
	LOC INC 110.5	Final Apch Crs 206^	GS OM 1706' (1565')	ILS DA(H) 341' (200')	Apt Elev 143' RWY 141'

MISSED APCH: **A** Climb STRAIGHT AHEAD to 2470', then climbing turn RIGHT to 4930'. Intercept 026^ from RP NDB outbound to join holding.
MAX IAS 205 KT.
OR
B Climb STRAIGHT AHEAD to 2470', then turn RIGHT to RP NDB at 3940' and join ENROUTE flight. MAX IAS 205 KT.

Alt Set: hPa Rwy Elev: 5 hPa Trans level: FL 118 Trans alt: 9850' **1**
Initial approach restricted to MAX IAS 205 KT.

LOC (GS out)	NCH DME	1.0	2.0	3.0	4.0	5.0	6.0	7.0	8.0
	ALTITUDE	700'	1020'	1340'	1660'	1970'	2290'	2610'	2930'



PANS OPS 4	STRAIGHT-IN LANDING RWY 21				CIRCLE-TO-LAND	
	ILS		LOC (GS out)		Not authorized East of rwy	
	DA(H) 341' (200')		MDA(H) 560' (419')			
	FULL		ALS out			
	A		RVR 720m VIS 800m	1200m	RVR 1500m VIS 1600m	1320' (1177') 2000m
B					1320' (1177') 2400m	
C		RVR 720m VIS 800m	1200m	RVR 1800m VIS 2000m	2070' (1927') 4800m	
D			RVR 1500m VIS 1600m			

/KHN
CHANGBEI

JEPPESEN
3 SEP 04 (13-1)

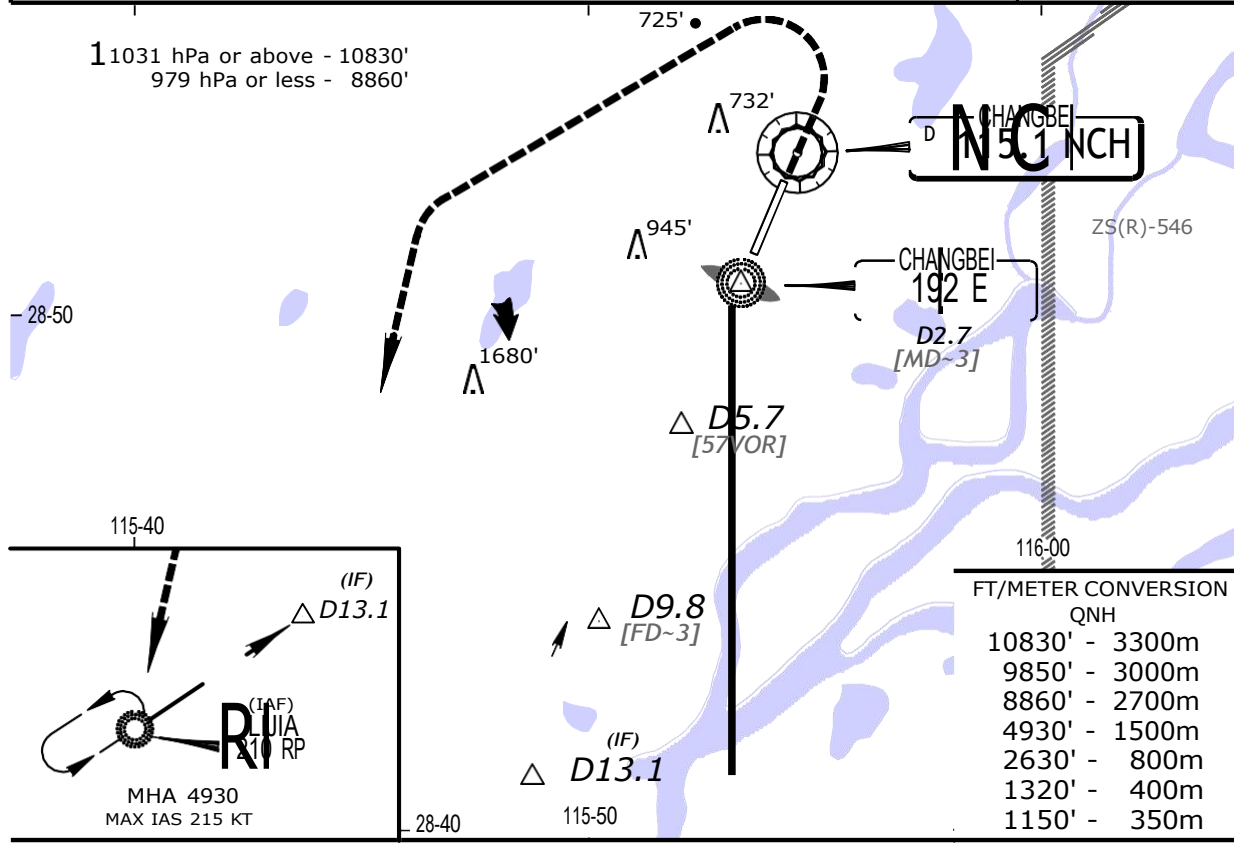
NANCHANG, PR OF CHINA
VOR DME Rwy 03

BRIEFING STRIP™	ATIS	NANCHANG Tower		Ground
	128.4	118.65	121.7	
	VOR NCH 115.1	Final Apch Crs 026^	Minimum Alt D9.8 2630' (2509')	MDA(H) 660' (539')

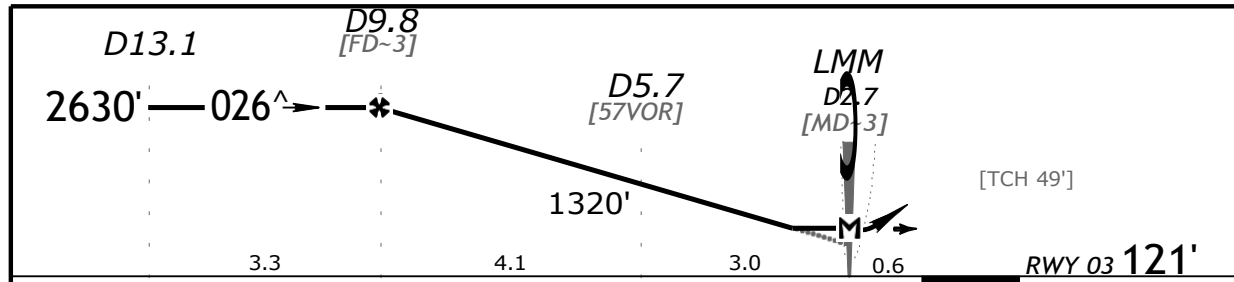
MISSED APCH: Climb STRAIGHT AHEAD to 1150', then climbing turn LEFT to 4930'. Intercept and follow 196^ to RP NDB at 4930'. MAX IAS 205 KT.

Alt Set: hPa Rwy Elev: 4 hPa Trans level: FL 118 Trans alt: 9850' 1

Initial approach restricted to MAX IAS 205 KT.



NCH DME	10.0	9.0	8.0	7.0	6.0	5.0	4.0	3.0
ALTITUDE	2670'	2350'	2040'	1720'	1410'	1090'	780'	460'



Gnd speed-Kts	70	90	100	120	140	160	 205 KT 1150' MAX ↑
Descent gradient 5.30% or	376	484	538	645	753	861	
Descent angle [3.04^]							

MAP at LMM/D2.7

STRAIGHT-IN LANDING RWY 03			CIRCLE-TO-LAND	
MDA(H) 660' (539')			Not authorized East of rwy	
	ALS out	Max Kts	MDA(H)	
A	RVR 720m VIS 800m	100	1320' (1177')	2000m
B	RVR 1500m VIS 1600m	135	1320' (1177')	2400m
C	RVR 1500m VIS 1600m	180	2070' (1927')	4800m
D	RVR 1800m VIS 2000m	205		

PANS OPS 4

以上内容仅为本文档的试下载部分，为可阅读页数的一半内容。如要下载或阅读全文，请访问：<https://d.book118.com/886115201050010105>