



Introduction to Japanese attractions in English sp



PROJECT

目录

CONTENTS

- History and Culture of Japan
- Scenic spots in Japan
- Japanese cuisine and shopping
- Japanese Lifestyle and Festivals
- Practical information on Japanese





01

History and Culture of Japan





historical background

Ancient Japan

The earliest known human settlement in Japan dates back to the Upper Paleolithic period, about 30,000 years ago. The Jomon period, from about 10,000 BC to 300 AD, is characterized by hunter-gatherer communities and simple pottery.

Medieval Japan

The Medieval period saw the development of feudalism and the rise of the samurai class. This period was also marked by the development of the tea ceremony, flower arrangement, and other cultural pursuits.

Modern Japan

The Meiji Restoration in 1868 marked the beginning of Japan's modernization, including the introduction of Western culture and technology. This period also saw the development of Japan's first national parks and the rise of tourism.



Cultural characteristics

Traditional Arts

Japan has a rich tradition of arts, including tea ceremony, flower arrangement, calligraphy, and traditional music. These arts are considered an essential part of Japanese culture and are passed down through generations.

Architecture

Japanese architecture is known for its simplicity and harmony, with features such as shoji doors, tatami mats, and gabled roofs. Important examples include the Golden Pavilion and the Byōdō-in in Kyoto.

Festivals and Events

单击此处添加正文，文字是您思想的提炼，为了最终呈现发布的良好效果，请尽量言简意赅的阐述观点；单击此处添加正文，文字是您思想的提炼，为了最终呈现发布的良好效果，请尽量言简意赅的阐述观点；单击此处添加正文，文字是您思想的提炼，为了最终呈现发布的良好效果，请尽量言简意赅的阐述观点；单击此处添加正文 10*14



Traditional Art and Handicrafts

Bonsai

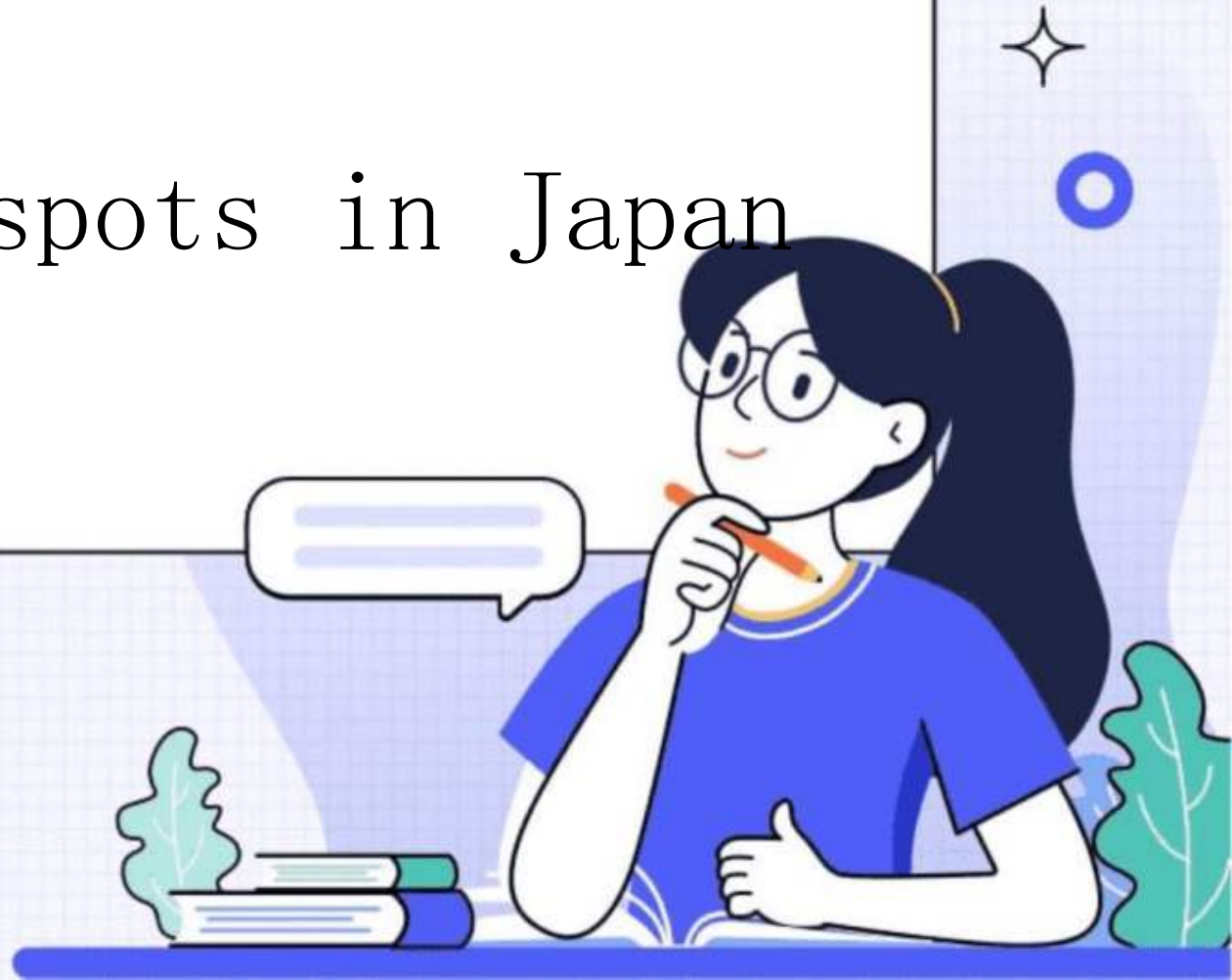
Bonsai is a traditional art of miniaturizing and styling trees, usually using dwarf trees or young plants. It is considered an essential part of Japanese culture and is highly prized by both the Japanese and international community.

Kimono

The kimono is a traditional garment worn by both men and women in Japan. It is made from a single piece of cloth wrapped around the body and fastened with a sash. Kimonos come in a variety of styles and patterns, each with its own cultural significance.



02 Scenic spots in Japan





Mount Fuji and Hakone Hot Springs



Mount Fuji

Known as the "sacred mountain" of Japan, Mount Fuji is the highest peak in the country and a cultural icon. It offers breathtaking views and is a popular destination for hiking and climbing.



Hakone Hot Springs

Located in the Fuji-Hakone-Izu National Park, Hakone is famous for its onsen (hot springs). Visitors can soak in the therapeutic waters and enjoy the natural beauty of the surrounding mountains and lakes.



Kyoto Ancient Architecture and Gardens

Kyoto

The former capital of Japan, Kyoto is a city rich in history and culture. It's home to numerous ancient temples, palaces, and gardens that reflect the traditional arts and architecture of Japan.

Gardens

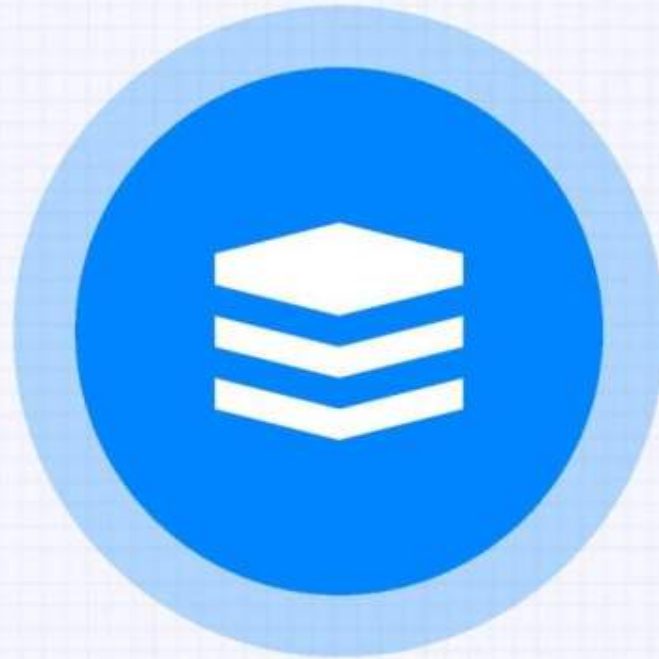
Kyoto's gardens are a highlight of the city's cultural heritage. They range from formal Zen gardens to naturalistic landscapes, each with its own unique beauty and design philosophy.



Hokkaido Snow Scenery and Hot Springs

Hokkaido

Japan's northernmost island, Hokkaido, offers a different kind of scenery with its vast snow-covered landscapes and alpine ski resorts. It's a popular winter destination for skiing and snowboarding enthusiasts.



Hot Springs

Hokkaido is also known for its natural hot springs, which are said to have therapeutic properties. Visitors can enjoy soaking in the warm waters while taking in the serene mountain views.



03

Japanese cuisine and shopping



以上内容仅为本文档的试下载部分，为可阅读页数的一半内容。如要下载或阅读全文，请访问：
<https://d.book118.com/886153021041010135>