

GENERAL**Operational Hours**

ATS Hours / AD ADMIN Hours: H24

Airport Information

RFF: CAT 7; CAT 10 O/R.

PCN: RWY 10/28: 56/F/B/W/T.

Operation**Preferential RWY**

LDG: RWY 28 (0500-2100‡)

TKOF: RWY 28 (H24)

TWY Restriction

TWY L width 7m / 23ft.

TWY Y width 8m / 26ft.

TWY N1, N2, T width 15m / 49ft.

TWY F and W width 18m / 59ft.

TWY H1, H2, R and D2 between TWYs B and S MAX wingspan 52m / 171ft.

TWY F MAX wingspan 36m / 118ft, for Code C ACFT follow-me mandatory.

TWY N1 MAX wingspan 36m / 118ft.

TWY N2 and W MAX wingspan 24m / 79ft.

TWY T and Y MAX wingspan 15m / 49ft.

Taxi

Follow-me mandatory after sunset on APN 3 for ACFT not based at EPP0 AD.

Engine Run-up: ENG test between 2100-0500‡ prohibited.

Noise Abatement Procedure

Use of engine powered GPU is prohibited all day and night on all stands.

Warnings

TWY D2 (between RWY 10 HLDG PSN and RWY edge and from INT with TWY S on a stretch of around 300m / 984ft) and TWY S in the middle segment are not visible from TWR.

Surface uneven and damaged in the concrete RWY portion from 0 - 350m / 1148ft.

ARRIVAL**Arrival Procedure****Noise Abatement Procedure**

2100-0500‡

- LDG: reduce the use of reverse thrust, except EMERG.
- Enter APN with MNM PWR.

Continuous Descent Approach (CDA)

- Arrange descent to pass 7000ft AMSL within 25NM to touchdown.
- Expect track miles INFO or base leg INFO from ATC at or above 7000ft AMSL. Do not turn on base leg until instructed.
- At or before downwind PSN maintain IAS 220KT or MNM clean speed, whichever is greater.

Warnings

Do not mistake Poznan Military AD 7.4NM SE.

DEPARTURE**Take-off Minima**

| | | | |
|----------|-----------|---------------|---|
| RWY | | 10/28 | |
| All ACFT | ft - m/km | 0 - 550R/800V | - |

Departure Procedure

Stand 2-20: PWR-back approved up to MAX wingspan 36m / 118ft, otherwise push-back.
After TKOF contact APP as soon as possible unless otherwise instructed.

Noise Abatement Procedure

Use ACFT specific NAP if AVBL. Otherwise it is recommended to use ICAO Standard NADP 1.

2100-0500±:

- RWY 28: track extended RWY CL until 1.5NM from RWY 10 THR, then execute turn as per ATC CLR.
- RWY 10: it is recommended not to perform TKOFs from RWY 10.

Minimum Runway Occupancy Time (MROT)

Ensure standard MROT procedures

ATC Slot, Clearance

REQ CLR 10min prior to being ready for push-back or start-up to DLV and report:

- Call sign
- Stand
- Destination AD
- Planned cruising LVL (if other than in FPL)
- Any changes to FPL

CLRs are not issued earlier than 30min before EOBT/CTOT.

De-icing

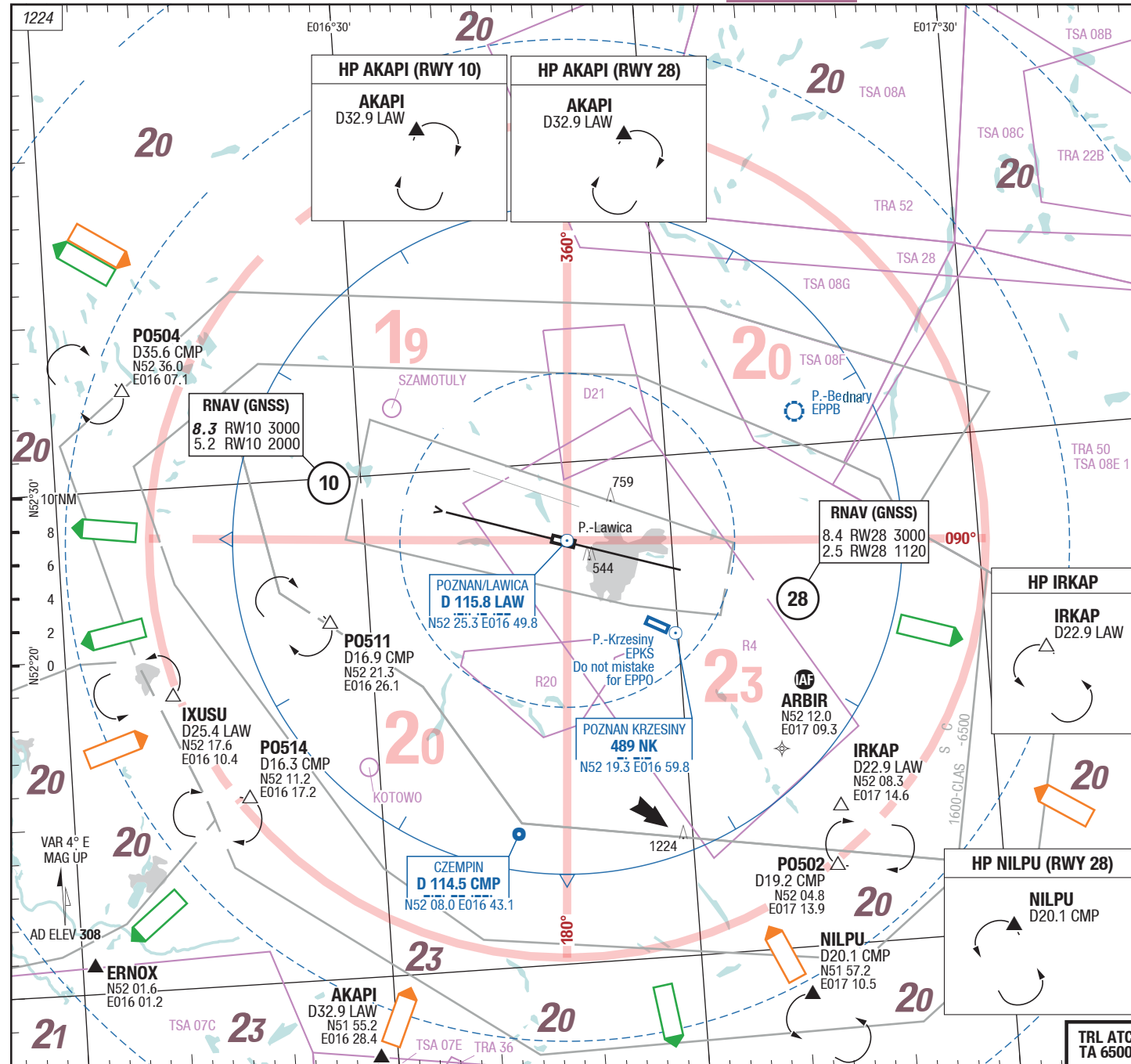
De-icing of ACFT with wingspan up to 36m / 118ft carried out on stands 40 and 40A.

De-icing of ACFT with wingspan above 36m / 118ft carried out on the ASPH part of APN 1.

It is advised to switch off ENG during de-icing.

Taxiing and positioning for de-icing with marshaller only.

2-10



| | |
|------|--------------------|
| ATIS | 124.700 AWOS |
| APP | 127.225 129.025 |
| TWR | 119.975 |
| DLV | 121.800 0430-2030z |

Landing RWY system:

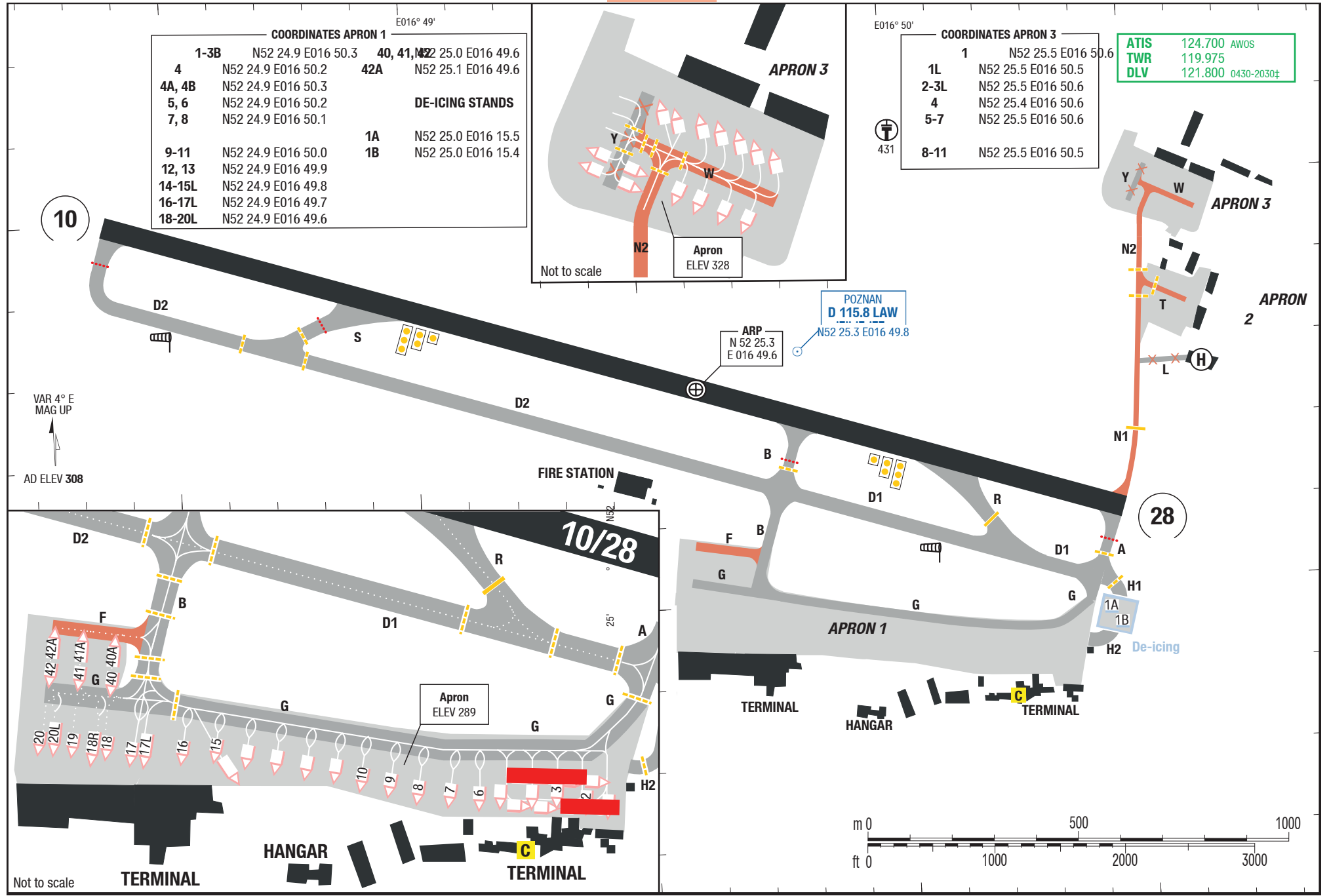
10

HL-S **THR 308** (11hPa) / TDZ 306 (---%) -0.2%

60 HL **50 x 2504** | 3.0° | 15 HL

28

+0.2% **TDZ 300** (---%) / **THR 288** (10hPa) | HL-P1F



COORDINATES APRON 1 E016° 49'

| | | | |
|--------|--------------------|------------------------|--------------------|
| 1-3B | N52 24.9 E016 50.3 | 40, 41, M22 | N52 25.0 E016 49.6 |
| 4 | N52 24.9 E016 50.2 | 42A | N52 25.1 E016 49.6 |
| 4A, 4B | N52 24.9 E016 50.3 | | |
| 5, 6 | N52 24.9 E016 50.2 | DE-ICING STANDS | |
| 7, 8 | N52 24.9 E016 50.1 | 1A | N52 25.0 E016 15.5 |
| | | 1B | N52 25.0 E016 15.4 |
| 9-11 | N52 24.9 E016 50.0 | | |
| 12, 13 | N52 24.9 E016 49.9 | | |
| 14-15L | N52 24.9 E016 49.8 | | |
| 16-17L | N52 24.9 E016 49.7 | | |
| 18-20L | N52 24.9 E016 49.6 | | |

COORDINATES APRON 3 E016° 50'

| | |
|------|--------------------|
| 1 | N52 25.5 E016 50.6 |
| 1L | N52 25.5 E016 50.5 |
| 2-3L | N52 25.5 E016 50.6 |
| 4 | N52 25.4 E016 50.6 |
| 5-7 | N52 25.5 E016 50.6 |
| 8-11 | N52 25.5 E016 50.5 |

| | | |
|------|---------|------------|
| ATIS | 124.700 | AWOS |
| TWR | 119.975 | |
| DLV | 121.800 | 0430-2030z |

Changes: HLDG POS, COORD

以上内容仅为本文档的试下载部分，为可阅读页数的一半内容。如要下载或阅读全文，请访问：<https://d.book118.com/897120042126006126>