



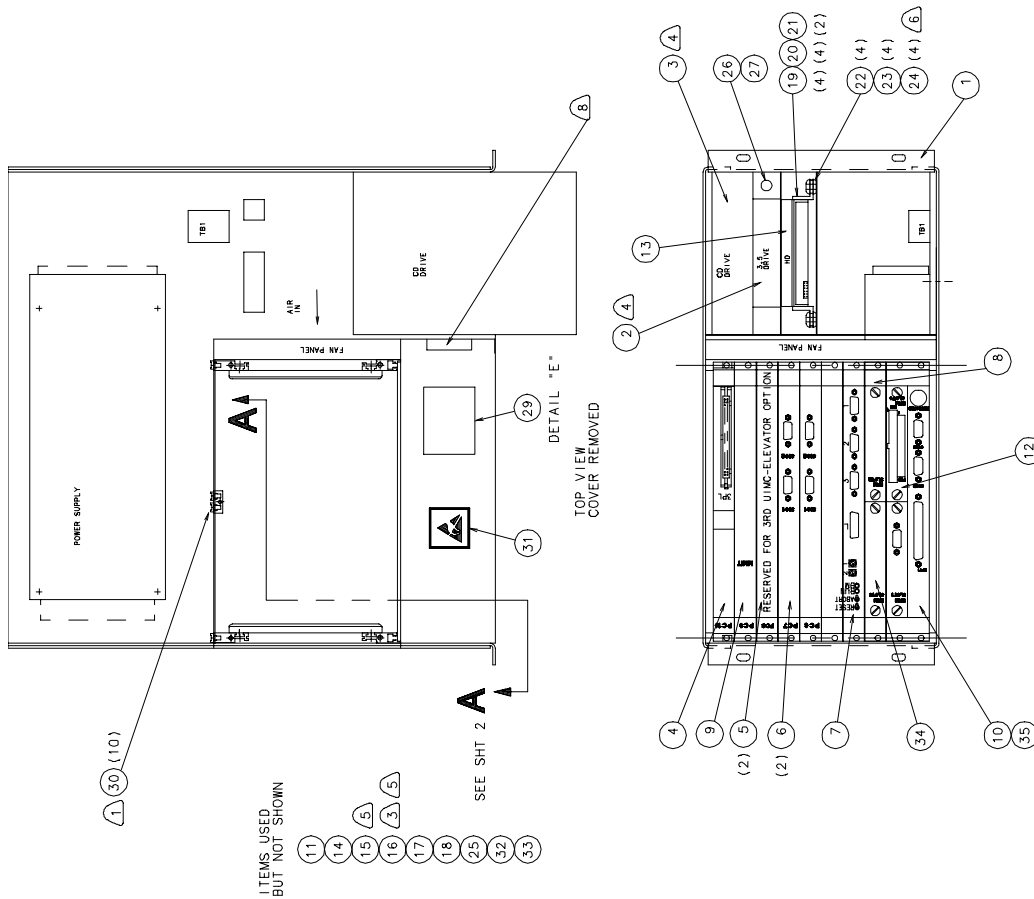
Table of Contents

Assembly Drawings 1
Functional Description 3
Maintenance Concept 3
Prerequisite Information 3
Procedures and Adjustments 4
 Drive Bay Vacuuming 4
Advanced Support Information 5
 Power Supply Replacement 5
 Disk Drive Replacement 7
 VME Drive Bay Removal 7
 Hard Drive Replacement 8
 CD-ROM Drive Replacement 9
 Floppy Drive Replacement 10
 EXM Configuration 10
 Printed Circuit Board Replacement 11
 Motion Controller (UIMC) PROM Replacement 12
 Description of VME PC Boards 14
 VME Controls and Ports Defined 17
 VME Setup/Troubleshooting Information 19
Changes To This Revision 20



VME Chassis Assembly

T46803804 Rev. C



| DET. NO. | ITEM NO. | DESCRIPTION | QTY | U/M/SP | MISCELLANEOUS | |
|----------|----------|-------------|--|--------|---------------|--|
| | 0035 | 40651201 | SHUNT | 1.000 | EA | |
| | 0034 | 44373802 | VGA CONTROLLER | 1.000 | EA | |
| | 0033 | T46803804 | DOC. 10 SLOT VME CHASSIS ASM. SU | 1.000 | EA | |
| | 0032 | 46908801 | COPD. PWR. SHLD; 18 AWG; 6" X 7" | 1.000 | EA | |
| | 0031 | 46378001 | LABEL; LED | 1.000 | EA | |
| | 0030 | 44351801 | CONNECTOR; CLAMP | 10.000 | EA | |
| | 0029 | 43962101 | LABEL; SERIAL | 1.000 | EA | |
| | 0028 | 46861801 | SUBPLANE | 1.000 | EA | |
| | 0027 | 46975901 | OPTO; LED; DOME; GRN; T-1 3/4; 5V | 1.000 | EA | |
| | 0026 | BLKED1901 | CLIP; MTG | 1.000 | EA | |
| | 0025 | 45679902 | DISK LT. CABLE ASSY | 1.000 | EA | |
| | 0024 | 47628301 | NUT; M4; NYLON INSERT | 4.000 | EA | |
| | 0023 | 80031701 | MFW M4 | 4.000 | EA | |
| | 0022 | BLKED1299 | GROM. RBR. 3/16 I.D. 9/16 O.D. 3/8 THK | 4.000 | EA | |
| | 0021 | 45475101 | BRACKET; DISK DRIVE | 2.000 | EA | |
| | 0020 | 80008503 | PHMS 6-32 X 1/4 | 4.000 | EA | |
| | 0019 | 80019003 | ITLW #6 | 4.000 | EA | |
| | 0018 | 45242302 | SERIAL CABLE | 1.000 | EA | |
| | 0017 | 45242301 | SERIAL CABLE | 1.000 | EA | |
| | 0016 | 47145101 | DISK CABLE ASSY | 1.000 | EA | |
| | 0015 | 46898801 | DISK INTF. CABLE ASSY | 1.000 | EA | |
| | 0014 | 47006101 | DOC. JUMPER CONFIGURATION - IM | 1.000 | EA | |
| | 0013 | 4719701 | HARD DRIVE - 4.3 GB | 1.000 | EA | |
| | 0012 | 45475201 | CONTROLLER; IDE | 1.000 | EA | |
| | 0011 | D46860204 | DWG. ELEC DIAG. 10 SLOT VME | 1.000 | EA | |
| | 0010 | 44373704 | CPU; 80486 | 1.000 | EA | |
| | 0009 | 44024101 | PC BD. MMIT 1.0 ASSY | 1.000 | EA | |
| | 0008 | 44374301 | MODULE CARRIER | 1.000 | EA | |
| | 0007 | 47467302 | PC BD; CPU30/16MB | 1.000 | EA | |
| | 0006 | 47019901 | PC BD; AXIS CONT | 2.000 | EA | |
| | 0005 | 46518603 | PANEL; VME; 60X4HP | 2.000 | EA | |
| | 0004 | 43356702 | PC CD; VME/SAT INTF ASM | 1.000 | EA | |
| | 0003 | 46861901 | DRIVE; CD ROM | 1.000 | EA | |
| | 0002 | 44366801 | DISK DRIVE; 3.5 IN | 1.000 | EA | |
| | 0001 | 46861501 | VME ENCLOSURE | 1.000 | EA | |

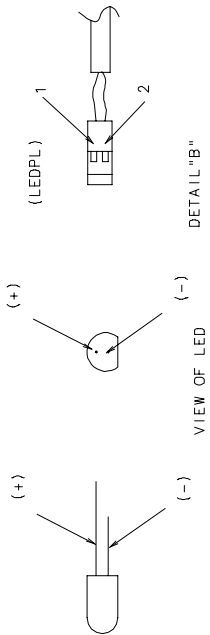


T46803804 Rev. C

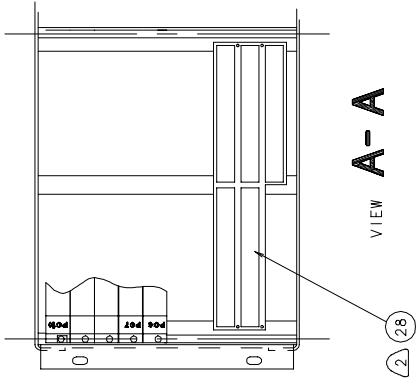
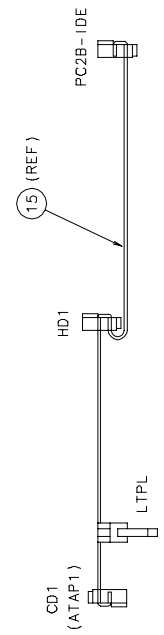
VME Chassis Assembly

WIRING CONNECTION CHART

| DET NO. | COLOR | FROM | TO | MISC. |
|---------|-----------|------------------------|---------------------|---|
| 15 | FL CABLE | EXM2-IDE | HD1 (HARD DISK IDE) | HD1 & CD1 ARE DAIKSY CHAINED ON SAME CABLE. CONNECT ON HD1 FIRST (DETAIL C) |
| 15 | FL CABLE | HD1 (HARD DISK IDE) | CD1-ATAP1 | |
| 16 | FL CABLE | EXM2-FDD | FD1-J1 | |
| 17 | DIN CABLE | PC1-COM2 | PC4-COM1 | USED ONLY DURING DEBUG |
| 18 | DIN CABLE | PC1-COM2 | PC6-COM1 | |
| 18 | DIN CABLE | PC1-COM2 | PC7-COM1 | |
| 25 | BLU | LEDPL | BPL - +5V-4 | |
| | BRN | LEDPL | LTP1 | |
| | | VENDOR SUPPLIED WIRING | | |
| | ORN | TB1 | HD1-DC INPUT 1 | +12V |
| | BLK | TB1 | HD1-DC INPUT 3 | GND |
| | RED | TB1 | HD1-DC INPUT 4 | +5V |
| | ORN | TB1 | CD1-DC INPUT 1 | +12V |
| | BLK | TB1 | CD1-DC INPUT 3 | GND |
| | RED | TB1 | CD1-DC INPUT 4 | +5V |
| | BLK | TB1 | FD1-DC INPUT 2 | GND |
| | RED | TB1 | FD1-DC INPUT 1 | +5V |



DETAIL "C"



(UIC ASSEMBLY PART # AND REVISION OF BUILD)

Universal
INSTRUMENTS CORPORATION
BINGHAMTON, N. Y., U.S.A.

NO. XXXXXXXX REV X

VOLTS 120VAC AMPS 5.1/1A

HZ 50/60HZ PHASE 1Ø

DETAIL "E"

NOTES:

- 1 - ATTACH CLAMPS TO BACKSIDE OF P2 CONNECTORS, SLOTS 4, 6, 7, 8 AND 9.
- 2 - USE HARDWARE AND INSTRUCTIONS SUPPLIED WITH SUBPLANE TO ASSEMBLE.
- 3 - PIN 1 INDICATOR ON DISK CABLE ASSY SHOULD LINE UP WITH PIN 1 ON FLOPPY DRIVE FD1.
- 4 - USE HARDWARE SUPPLIED WITH VME ENCLOSURE TO ATTACH CD AND FLOPPY DRIVES.
- 5 - WITH VME DRIVE BAY DISCONNECTED AND EXTENDING FORWARD, COLLECT EXCESS FLAT CABLE FROM DRIVES AND FASTEN, ALONG WITH MIT CABLE, TO BOTTOM OF CHASSIS WITH FLAT CABLE CLAMP PROVIDED. ALSO SECURE DRIVE POWER CABLING WITH CABLE TIE TO CLAMP ADJACENT TO FLAT CABLES.
- 6 - TIGHTEN NUT 1-2 TURNS AFTER NUT AND FLAT WASHER CONTACT GROMMET.
- 8 - ROUTE MIT CABLE FROM PC10 THROUGH FLAT CABLE FERRITE PROVIDED ON THE FAN PANEL.

VME Chassis Assembly

T46803804 Rev. C

Functional Description

The VME Chassis houses the Radisys processor board, the floppy drive, the hard drive, the Force processor board, motion control boards, and several other electrical assembly boards.

Maintenance Concept

The following table defines the recommended Maintenance Concept for this assembly. For a more detailed explanation of the Maintenance Concept and its structure refer to the Prerequisite Information/Introduction module and the periodic preventive maintenance as presented later in this document.

| Maintenance Procedures | Recommended Frequency | Minimum Skill Required | Spares Kit Required | Tool Kit Required |
|-----------------------------------|------------------------------|-------------------------------|----------------------------|--------------------------|
| Vacuum Drive Bay vents | Quarterly | Maintenance Technician | No | No |
| Power Supply Replacement | As Required | UIC Field Service Engineer | No | No |
| Disk Drive Replacement | As Required | UIC Field Service Engineer | No | No |
| Hard Drive Replacement | As Required | UIC Field Service Engineer | No | No |
| Printed Circuit Board Replacement | As Required | UIC Field Service Engineer | No | No |

Prerequisite Information



- See the Prerequisite Information/Introduction document for Adhesive and Lubricant icon information and definitions.

Procedures and Adjustments

Adjustments and corrective maintenance procedures required of the customer are presented in the following subsections.

Drive Bay Vacuuming

The VME Chassis disk drive bay requires periodic cleaning as prescribed in the Maintenance Concept. To clean the VME Chassis disk drive bay, perform the following procedure.



1. Power down the machine as detailed in the machine Operation Reference manual.

WARNING

The machine must be powered down and your site's Lockout/Tagout procedure executed during this procedure to ensure personal safety.

2. Remove the Front Right Hand Cover assembly to expose the VME Chassis.
3. Using a ESD protected vacuum cleaning device, vacuum the screen of the disk drive bay of any dust and/or contamination.
4. Replace the Front Right Hand Cover assembly onto the machine.

End of procedure.

以上内容仅为本文档的试下载部分，为可阅读页数的一半内容。如要下载或阅读全文，请访问：<https://d.book118.com/905104310133011242>