

服装画基础训练

主讲人：程冰莹

2011/01/10

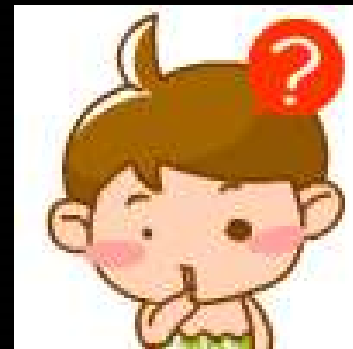
作者：陈祥波
作品名称：《伤痕挫折》



EEFF-NET
身线



你认为什么叫服装画？



Picture slide

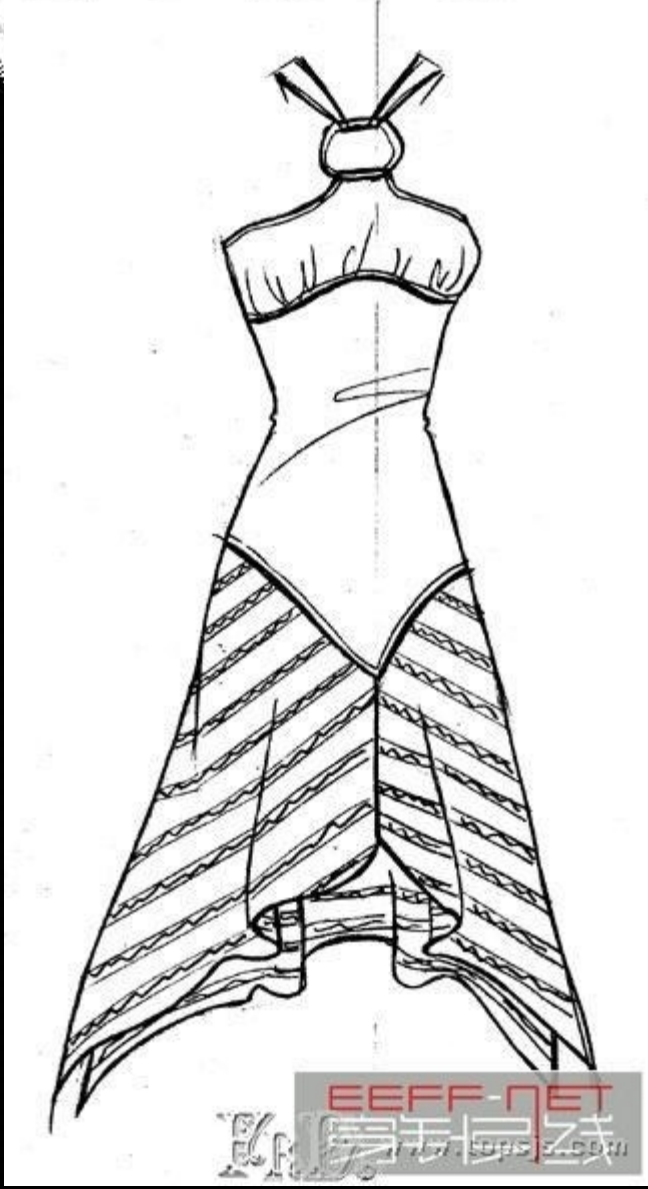
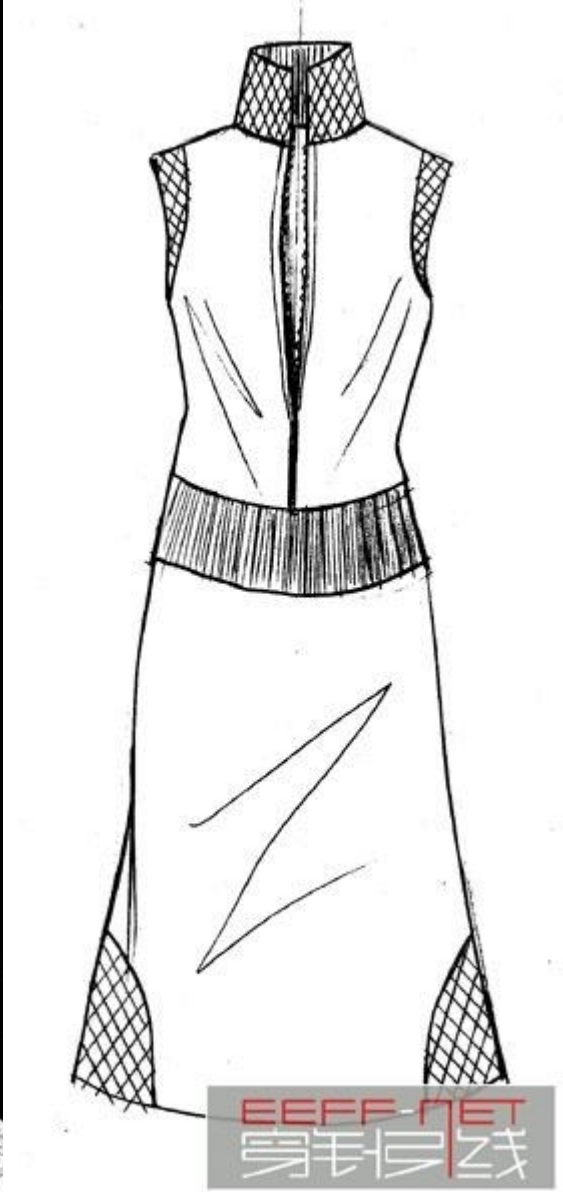


EEFF-NET
身身之线

广告宣传画

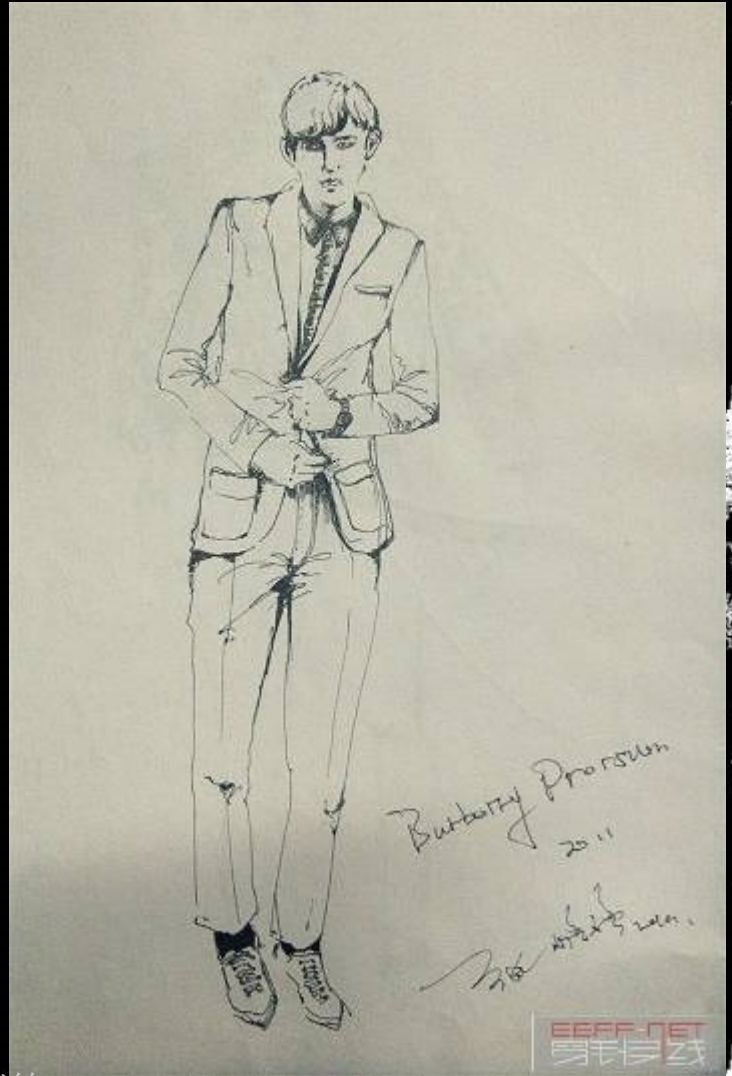


服装效果图



服装款式结构图

服装款式网



服装概念线稿



时装插画

88888888
88888888.com

Computer or uncomputer



服装画基础训练

EEFF.NET
服装画网







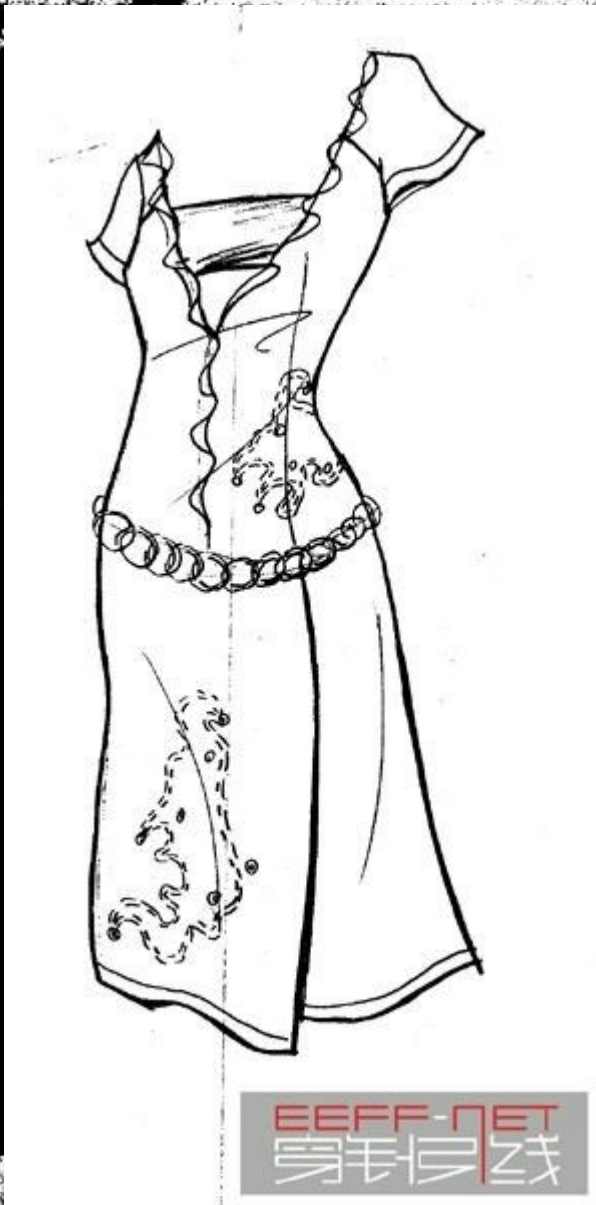
JJ-4543 6/12



JJ-4541 6/12



服装画基础训练



电脑绘画

学习内容： 服装款式图

上装

Jersey

Salvaged
crew-neck T-shirt



Grandad
underwear



Detachable
collar polo shirt



Low-cut V-neck
long-sleeved jersey



Oversized
slash-neck T-shirt



Henley update



Long tunic shirt



Full-bodied occasion shirt



Military shirt jacket



Clerical shirt



1920's formal shirt



Accessories



Coats

Slimline dress coat



Oversized raincoat



Biker/trench hybrid



Archive city coat



Lightweight commuter coat



Blanket coat



Scooter trench coat



Tailored
70s driving coat



Alaskan hunting coat



Duffel coat redux



Long-line technical cape



Technical parka



Retro boxy crew sweat



Jersey factory coat



Second-skin detachable roll-neck



Elongated zip-through jacket



Fisherman smock jersey



Oversize hooded biker



Sleeveless tank knit



Sturdy stitch interest crew-neck



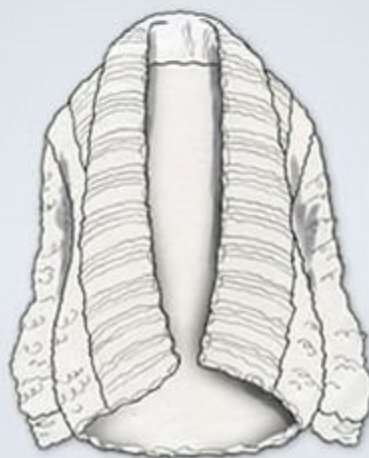
Cardigan wrap



Lived-in slouchy knit jacket



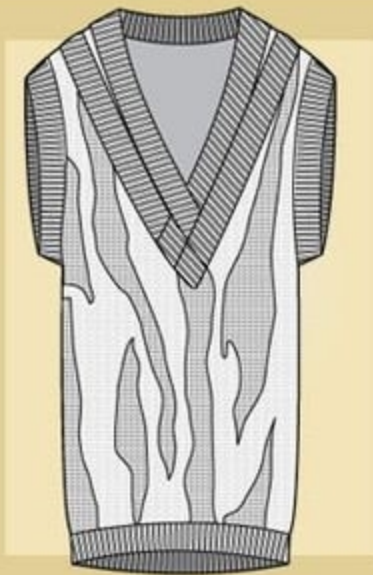
Unstructured shaggy cardi



Lumberjack cardigan jacket

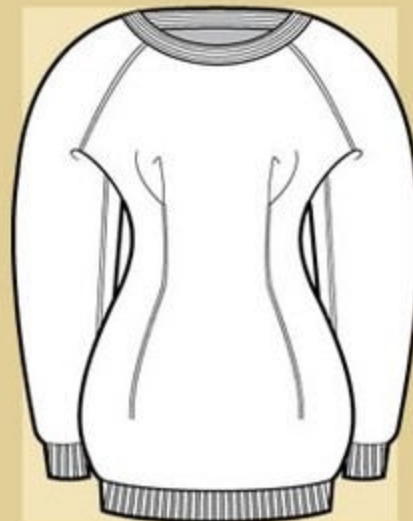


27 Crossover tank knit dress



- Oversized knee-length tank knit dress with roomy shape
- Double V-neck feature with interwoven effect
- Plaited transfer-stitch cracked-surface effect for fine gauge

28 Scuba sweat



- Bodybuilder-cut sweat style with roomy hourglass silhouette
- Pinched-in, un-pressed seams appearing "bagged out"
- Slight hourglass, hip-length shape with pull-in ribs
- Rounded-out, dropped shoulder line
- Simple crew neck with horizontal rib detail

07 Ovoid blouse



- Classic shirt styling with a futuristic egg-shape silhouette
- Super contrasted fabric combinations
- Ovoid kimono-cut sleeve

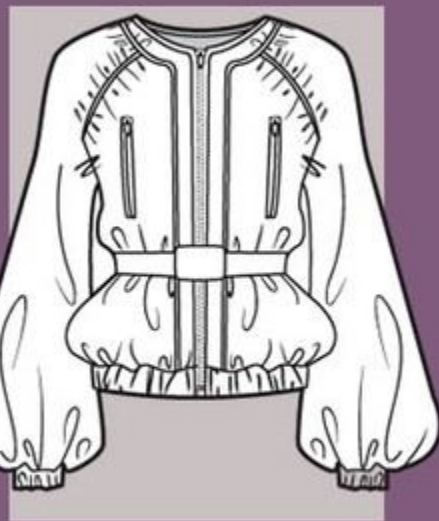
08 Circle-cut funnel top



- Wool jersey
- Deep armhole and tapered dolman sleeve
- Cut-in/cut-out dots
- Chiffon reverse applique used to create transparent windows

服装款式设计
服装款式设计

12 Belted blouson



- Buttery soft leather
- Blouson sleeve
- Ruched raglan detail

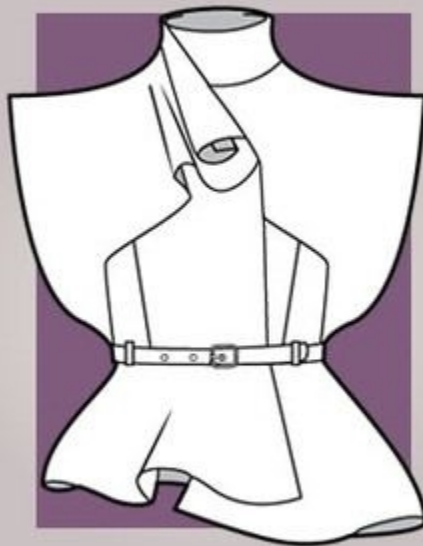
13 Kiddie-cut broad dolman



- Majorette leather jacket

EEFF-NET
服装网线

03 Scrolled samurai sleeveless jacket



- Sleeveless tailored gilet
- Voluptuous asymmetric peplum
- Samurai-cut sleeve curls into architectural scroll

04 Industrial biker



- Extended shoulders
- Inset dolman sleeve
- Ornamental placement studding

EEEE-7ET
身针线

Essential Jackets

06 Gaffer-wrap tuxedo



- Jacket given "tape" tuxedo detailing, with plastisol-printed gaffer tape and decorative tape detailing

07 Gift wrap

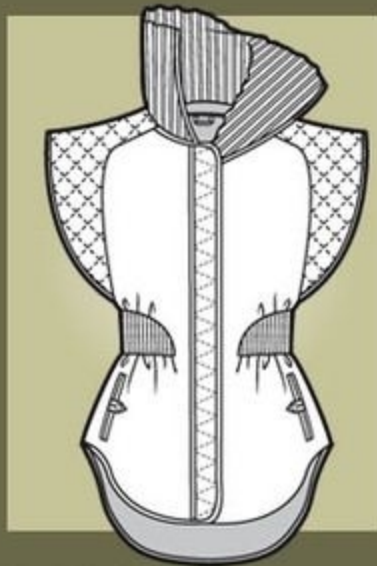


- Bubble-wrap presenta

EFPPH MET
身封日线

Essential Tops

09 Long gilet sweat



- Roll-down funnel-rib collar
- Quilt-stitched samurai shoulders
- Shaped raglan
- Waist-cinching rib insert
- Softly curved tailed hem

10 Oversized white shirt



- Cotton/lightweight woven fabric
- Lower half of sleeve is transparent hem
- Two-button faux cuff

EFFE-NET
服装款式设计

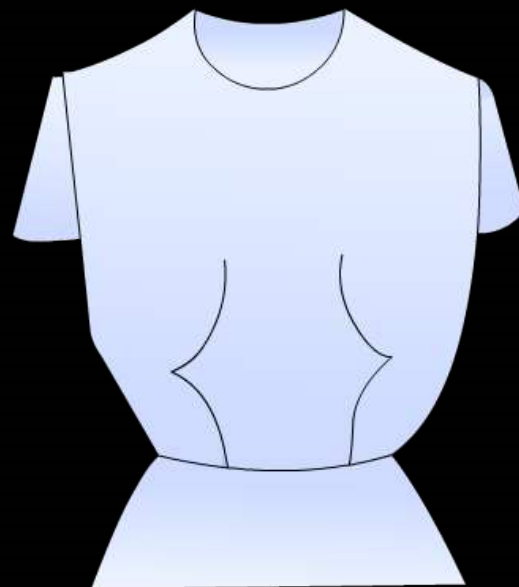
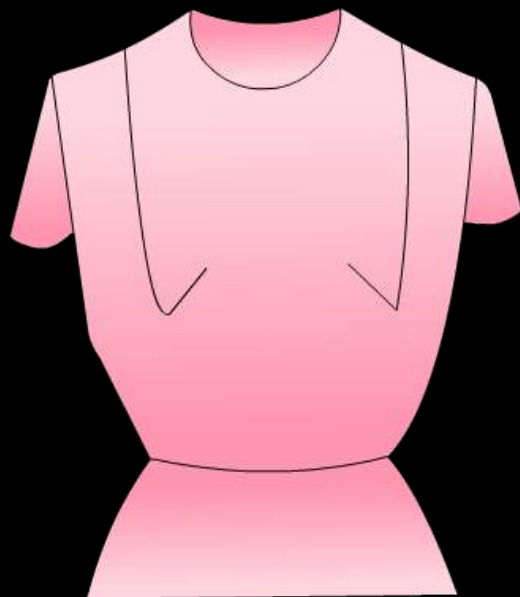
①服装穿着的合理性分析

即穿脱功能的矛盾或不合理



②服装造型结构的可行性分析

即外观效果的矛盾或不合理



下装

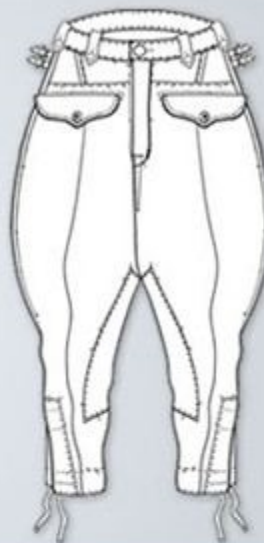
Cattleman's pant



New workwear chino



Updated jodhpur



Long john/jogger hybrid



Cargo update

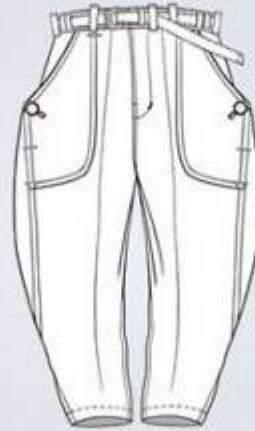


Denim

Flared jean



Balloon crop denim pant



50s straight-leg jean



Mountain pant



XXL-fit workwear pant

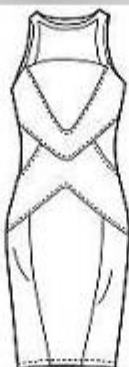


服装企业款式出样

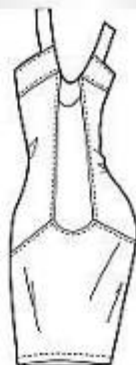
服装搭配



编号 D-10 可搭配 编号: 可不搭



编号 D-11 可搭配 编号: 可不搭



编号 D-12 可搭配 编号: 可不搭



编号 D-13 可搭配 编号: 可不搭



编号 D-14 可搭配 编号: 可不搭



编号 D-15 可搭配 编号: D-20 D-21



p16 编号 D-16 可搭配 编号: D-04 D-05

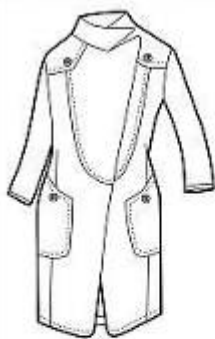


服装 编号 D-17 可搭配 编号: D-04 D-05 D-06 D-07 D-08



编号 D-18

服装搭配



编号 D-01 可搭配 编号: D-11 D-12 D-20 D-21



编号 D-02 可搭配 编号: D-20 D-21



编号 D-03 可搭配 编号: D-20 D-21



编号 D-04 可搭配 编号: D-16 D-17 D-22 D-23



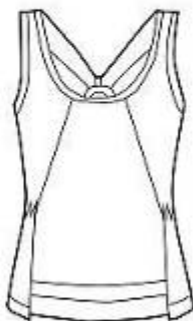
编号 D-05 可搭配 编号: D-16 D-17 D-20 D-23 D-22 D-21



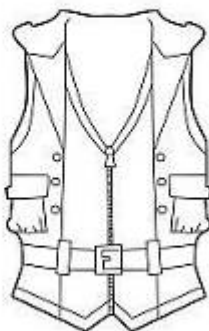
编号 D-06 可搭配 编号: D-16 D-17 D-20 D-23 D-22 D-21



编号 D-07 可搭配 编号: D-17 D-18 D-22 D-23 D-24



编号 D-08 可搭配 编号: D-17 D-18 D-22 D-23 D-24



编号 D-09 可搭配 编号: D-17 D-18 D-22 D-23 D-24

驳领长风衣
简洁的线条，
风衣的质感，
用大扣子



西装外套
大大小小
的口袋，
线条的
对比，
更添
立体感



服装画基础训练

泡泡袖连体裙

以上内容仅为本文档的试下载部分，为可阅读页数的一半内容。如要下载或阅读全文，请访问：<https://d.book118.com/995013213340012003>